

PAA478Hu01

Polyclonal Antibody to Cardiac Troponin I (cTnI)

Organism Species: *Homo sapiens (Human)*

Instruction manual

FOR RESEARCH USE ONLY

NOT FOR USE IN CLINICAL DIAGNOSTIC PROCEDURES

13th Edition (Revised in Aug, 2023)

[PROPERTIES]

Source: Polyclonal antibody preparation

Host: Rabbit

Purification: Antigen-specific affinity chromatography followed by Protein A affinity chromatography

Traits: Liquid

Concentration: 0.5mg/mL

UOM: 20 μ L

Cross Reactivity: Mouse;Rat;Canine;Porcine;Bovine

Applications: WB; IHC

[IMMUNOGEN]

Immunogen: Recombinant cTnI (Met1~Gly203) expressed in *E.coli*

Accession No.: RPA478Hu01

[APPLICATIONS]

Western blotting: 0.01-2 μ g/mL;

Immunohistochemistry: 5-30 μ g/mL;

Optimal working dilutions must be determined by end user.

[FORMULATION]

Form & Buffer: Supplied as solution form in 0.01M PBS, pH7.4, containing 0.05% Proclin-300, 50% glycerol.

[STORAGE AND STABILITY]

Storage: Avoid repeated freeze/thaw cycles.

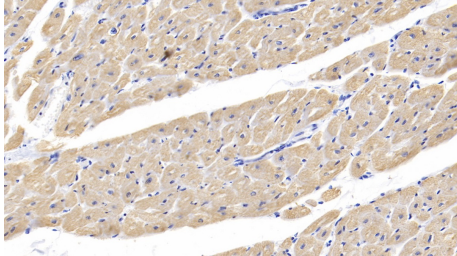
Store at 4°C for frequent use.

Aliquot and store at -20°C for 24 months.

Stability Test: The thermal stability is described by the loss rate. The loss rate was determined by accelerated thermal degradation test, that is, incubate the protein at 37°C for 48h, and no obvious degradation and precipitation were observed. The loss rate is less than 5% within the

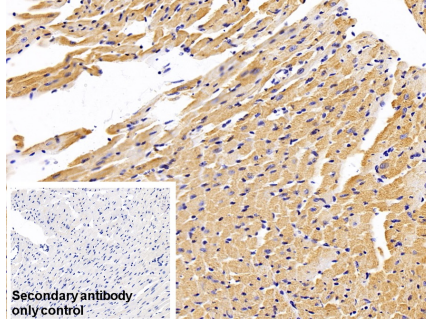
expiration date under appropriate storage condition.

[IDENTIFICATION]



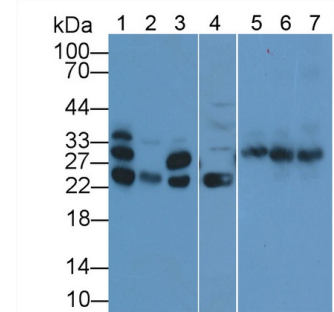
DAB staining on IHC-P; Samples:

Human Cardiac Muscle Tissue; Primary Ab: 20µg/ml Rabbit Anti-Human TNNI3 Antibody Second Ab: 2µg/mL HRP-Linked Caprine Anti-Rabbit IgG Polyclonal Antibody (Catalog: SAA544Rb19)



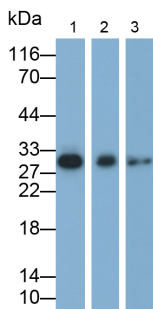
DAB staining on IHC-P;

Sample: Mouse Cardiac Muscle Tissue Primary Ab: 30µg/ml Rabbit Anti-Human cTnI Antibody Control: Used PBS instead of primary antibody Second Ab: 2?g/ml HRP-Linked Caprine Anti-Rabbit IgG Polyclonal Antibody (Catalog: SAA544Rb19)



Western Blot; Sample: Lane1: Rat

Heart lysate; Lane2: Rat Skeletal muscle lysate; Lane3: Porcine Heart lysate; Lane4: Porcine Skeletal muscle lysate; Lane5: Mouse Heart lysate; Lane6: Canine Heart lysate; Lane7: Bovine Heart lysate; Primary Ab: 2µg/mL Rabbit Anti-Human TNNI3 Antibody Second Ab: 0.2µg/mL HRP-Linked Caprine Anti-Rabbit IgG Polyclonal Antibody (Catalog: SAA544Rb19)



Western Blot; Samples: Lane1: Rat Heart lysate; Lane2: Porcine Heart lysate; Lane3: Porcine Skeletal muscle lysate; Primary Ab: 0.05µg/ml Rabbit Anti-Human cTnI Antibody

Second Ab: 0.2?g/ml HRP-Linked

Caprine Anti-Rabbit IgG Polyclonal

Antibody

(Catalog: SAA544Rb19)

[IMPORTANT NOTE]

The kit is designed for research use only, we will not be responsible for any issue if the kit was used in clinical diagnostic or any other procedures.