

PAC418Hu04

Polyclonal Antibody to Catalase (CAT)

Organism Species: *Homo sapiens* (Human)

Instruction manual

FOR RESEARCH USE ONLY

NOT FOR USE IN CLINICAL DIAGNOSTIC PROCEDURES

13th Edition (Revised in Aug, 2023)

[PROPERTIES]

Source: Polyclonal antibody preparation

Host: Rabbit

Purification: Antigen-specific affinity chromatography followed by Protein A affinity chromatography

Traits: Liquid

Concentration: 0.5mg/mL

UOM: 100µL

Cross Reactivity: Mouse

Applications: WB; ICC/IF; FCM

[IMMUNOGEN]

Immunogen: Recombinant CAT (Gly32~Ser167) expressed in *E.coli*

Accession No.: RPC418Hu04

[APPLICATIONS]

Western blotting: 0.01-2?g/mL;

Immunohistochemistry: 5-20?g/mL;

Flow cytometry: 20?g/mL;

Optimal working dilutions must be determined by end user.

[FORMULATION]

Form & Buffer: Supplied as solution form in 0.01M PBS, pH7.4, containing 0.05% Proclin-300, 50% glycerol.

[STORAGE AND STABILITY]

Storage: Avoid repeated freeze/thaw cycles.

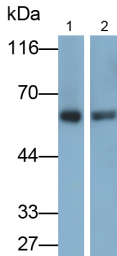
Store at 4°C for frequent use.

Aliquot and store at -20°C for 24 months.

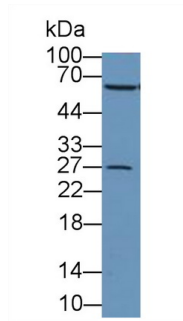
Stability Test: The thermal stability is described by the loss rate. The loss rate was determined by accelerated thermal degradation test, that is, incubate the protein at 37°C for 48h, and no

obvious degradation and precipitation were observed. The loss rate is less than 5% within the expiration date under appropriate storage condition.

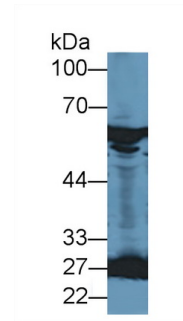
[IDENTIFICATION]



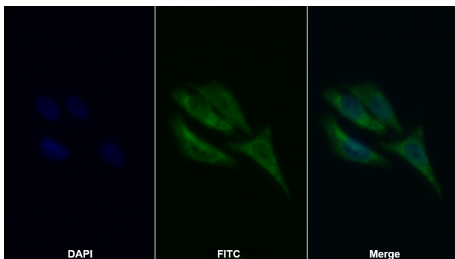
Western Blot; Samples: Lane1: Rat Kidney lysate; Lane2: HepG2 cell lysate; Primary Ab: 0.2µg/ml Rabbit Anti-Human CAT Antibody Second Ab: 0.2µg/ml HRP-Linked Caprine Anti-Rabbit IgG Polyclonal Antibody (Catalog: SAA544Rb19)



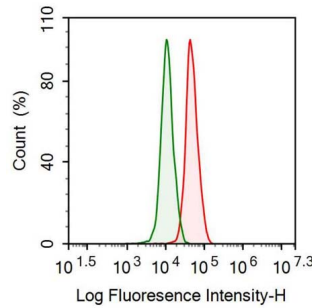
Western Blot; Sample: Human Liver lysate; Primary Ab: 1µg/ml Rabbit Anti-Human CAT Antibody Second Ab: 0.2µg/mL HRP-Linked Caprine Anti-Rabbit IgG Polyclonal Antibody (Catalog: SAA544Rb19)



Western Blot; Sample: Mouse Kidney lysate; Primary Ab: 1µg/ml Rabbit Anti-Human CAT Antibody Second Ab: 0.2µg/mL HRP-Linked Caprine Anti-Rabbit IgG Polyclonal Antibody (Catalog: SAA544Rb19)



FITC staining on IF; Samples: Human HepG2 cell; Primary Ab: 20µg/ml Rabbit Anti-Human CAT Antibody Second Ab: 1.5µg/ml FITC-Linked Caprine Anti-Rabbit IgG Polyclonal Antibody (Catalog: SAA544Rb18)



Human THP1 cell was fixed with 2% paraformaldehyde (10 min), permeabilised with 0.1% BSA-Triton X-100, then stained with 20µg/ml rabbit Anti-human CAT Polyclonal Antibody (Catalog PAC418Hu04, red histogram) or Isotype control antibody (Catalog IS067-Rb01, green histogram), followed by 1µg/ml FITC-conjugated Anti-rabbit

IgG Secondary Antibody (Catalog
SAA544Rb18).

[IMPORTANT NOTE]

The kit is designed for research use only, we will not be responsible for any issue if the kit was used in clinical diagnostic or any other procedures.