

**PAB134Hu02**

**Polyclonal Antibody to Chondroitin Sulfate Proteoglycan 4 (CSPG4)**

**Organism Species: *Homo sapiens (Human)***

***Instruction manual***

**FOR RESEARCH USE ONLY**

**NOT FOR USE IN CLINICAL DIAGNOSTIC PROCEDURES**

---

13th Edition (Revised in Aug, 2023)

## **[ PROPERTIES ]**

**Source:** Polyclonal antibody preparation

**Host:** Rabbit

**Purification:** Antigen-specific affinity chromatography followed by Protein A affinity chromatography

**Traits:** Liquid

**Concentration:** 0.5mg/mL

**UOM:** 50µL

**Cross Reactivity:** Rat

**Applications:** WB; IHC; ICC; IP.

## **[ IMMUNOGEN ]**

**Immunogen:** Recombinant CSPG4 (Ser1705~Ile1942) expressed in *E.coli*

**Accession No.:** RPB134Hu02

## **[ APPLICATIONS ]**

Western blotting: 0.01-3µg/mL;

Immunohistochemistry: 5-20µg/mL;

Immunocytochemistry: 5-20µg/mL;

Optimal working dilutions must be determined by end user.

## **[ FORMULATION ]**

**Form & Buffer:** Supplied as solution form in PBS, pH7.4, containing 0.02% NaN<sub>3</sub>, 50% glycerol.

## **[ STORAGE AND STABILITY ]**

**Storage:** Avoid repeated freeze/thaw cycles.

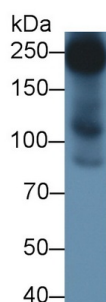
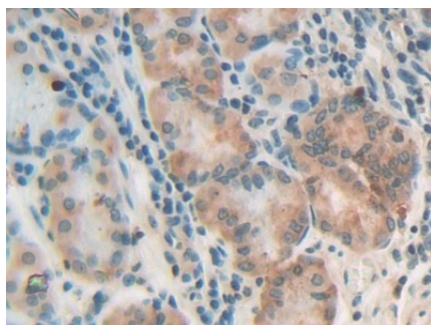
Store at 4°C for frequent use.

Aliquot and store at -20°C for 24 months.

**Stability Test:** The thermal stability is described by the loss rate. The loss rate was determined by accelerated thermal degradation test, that is, incubate the protein at 37°C for 48h, and no

obvious degradation and precipitation were observed. The loss rate is less than 5% within the expiration date under appropriate storage condition.

### [ IDENTIFICATION ]



DAB staining on IHC-P; Samples:	Western Blot; Sample: Rat Vein lysate
Human Stomach Tissue; Primary Ab:	Primary Ab: 3?g/ml Rabbit Anti-Human
20µg/ml Rabbit Anti-Human MCSP	MCSP Antibody
Antibody Second Ab: 2µg/mL HRP-	Second Ab: 0.2µg/mL HRP-Linked
Linked Caprine Anti-Rabbit IgG	Caprine Anti-Rabbit IgG Polyclonal
Polyclonal Antibody (Catalog:	Antibody
SAA544Rb19)	(Catalog: SAA544Rb19)

### [ IMPORTANT NOTE ]

The kit is designed for research use only, we will not be responsible for any issue if the kit was used in clinical diagnostic or any other procedures.