

**PAF625Hu01**

**Polyclonal Antibody to Chordin Like Protein 1 (CHRDL1)**

**Organism Species: *Homo sapiens (Human)***

***Instruction manual***

FOR RESEARCH USE ONLY

NOT FOR USE IN CLINICAL DIAGNOSTIC PROCEDURES

---

13th Edition (Revised in Aug, 2023)

### [ **PROPERTIES** ]

**Source:** Polyclonal antibody preparation

**Host:** Rabbit

**Purification:** Antigen-specific affinity chromatography followed by Protein A affinity chromatography

**Traits:** Liquid

**Concentration:** 0.5mg/mL

**UOM:** 100µL

**Cross Reactivity:** Rat

**Applications:** WB; IHC

### [ **IMMUNOGEN** ]

**Immunogen:** Recombinant CHRDL1 (Glu28~Cys458) expressed in *E.coli*

**Accession No.:** RPF625Hu01

### [ **APPLICATIONS** ]

Western blotting: 0.01-2µg/mL;

Immunohistochemistry: 5-20µg/mL;

Optimal working dilutions must be determined by end user.

### [ **FORMULATION** ]

**Form & Buffer:** Supplied as solution form in PBS, pH7.4, containing 0.02% NaN<sub>3</sub>, 50% glycerol.

### [ **STORAGE AND STABILITY** ]

**Storage:** Avoid repeated freeze/thaw cycles.

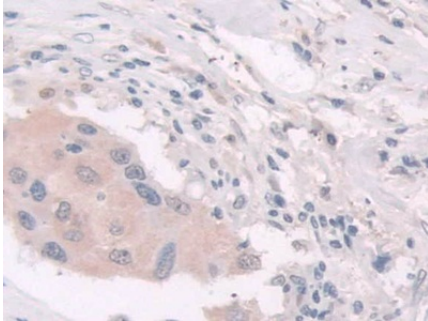
Store at 4°C for frequent use.

Aliquot and store at -20°C for 24 months.

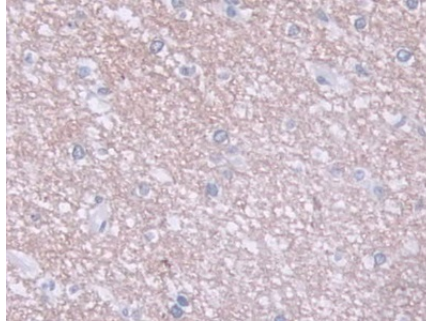
**Stability Test:** The thermal stability is described by the loss rate. The loss rate was determined by accelerated thermal degradation test, that is, incubate the protein at 37°C for 48h, and no obvious degradation and precipitation were observed. The loss rate is less than 5% within the

expiration date under appropriate storage condition.

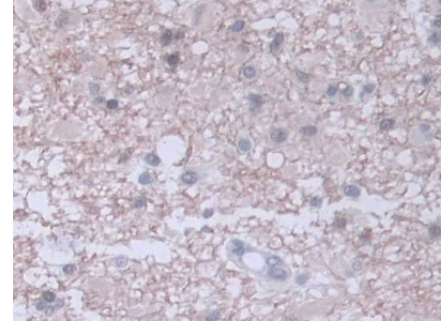
**[ IDENTIFICATION ]**



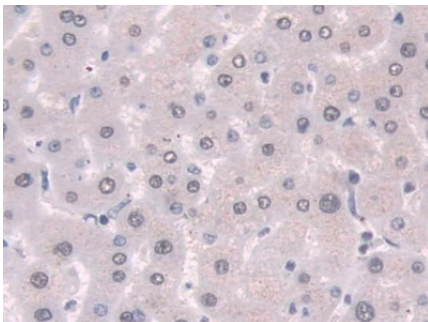
DAB staining on IHC-P; Samples:  
Human Breast cancer Tissue; Primary  
Ab: 10µg/ml Rabbit Anti-Human  
CHRD1 Antibody Second Ab:  
2µg/mL HRP-Linked Caprine Anti-  
Rabbit IgG Polyclonal Antibody  
(Catalog: SAA544Rb19)



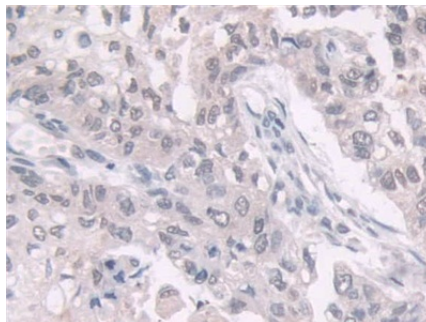
DAB staining on IHC-P;  
Samples: Human Cerebrum Tissue;  
Primary Ab: 10µg/ml Rabbit Anti-  
Human CHRD1 Antibody  
Second Ab: 2µg/mL HRP-Linked  
Caprine Anti-Rabbit IgG Polyclonal  
Antibody  
(Catalog: SAA544Rb19)



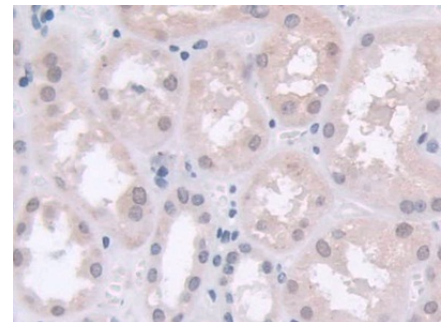
DAB staining on IHC-P;  
Samples: Human Glioma Tissue;  
Primary Ab: 10µg/ml Rabbit Anti-  
Human CHRD1 Antibody  
Second Ab: 2µg/mL HRP-Linked  
Caprine Anti-Rabbit IgG Polyclonal  
Antibody  
(Catalog: SAA544Rb19)



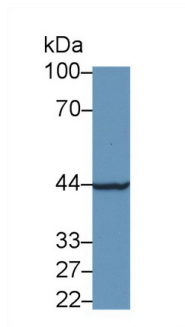
DAB staining on IHC-P;  
Samples: Human Liver Tissue;  
Primary Ab: 10µg/ml Rabbit Anti-  
Human CHRD1 Antibody  
Second Ab: 2µg/mL HRP-Linked  
Caprine Anti-Rabbit IgG Polyclonal  
Antibody  
(Catalog: SAA544Rb19)



DAB staining on IHC-P;  
Samples: Human Lung cancer Tissue;  
Primary Ab: 10µg/ml Rabbit Anti-  
Human CHRD1 Antibody  
Second Ab: 2µg/mL HRP-Linked  
Caprine Anti-Rabbit IgG Polyclonal  
Antibody  
(Catalog: SAA544Rb19)



DAB staining on IHC-P;  
Samples: Human Kidney Tissue;  
Primary Ab: 10µg/ml Rabbit Anti-  
Human CHRD1 Antibody  
Second Ab: 2µg/mL HRP-Linked  
Caprine Anti-Rabbit IgG Polyclonal  
Antibody  
(Catalog: SAA544Rb19)



Western Blot; Sample: Rat Kidney  
lysate;

Primary Ab: 1µg/ml Rabbit Anti-Human  
CHRDL1 Antibody

Second Ab: 0.2µg/mL HRP-Linked  
Caprine Anti-Rabbit IgG Polyclonal  
Antibody

(Catalog: SAA544Rb19)

### [ **IMPORTANT NOTE** ]

The kit is designed for research use only, we will not be responsible for any issue if the kit was used in clinical diagnostic or any other procedures.