

**PAB530Hu01**

**Polyclonal Antibody to Cluster Of Differentiation 36 (CD36)**

**Organism Species: *Homo sapiens (Human)***

***Instruction manual***

FOR RESEARCH USE ONLY

NOT FOR USE IN CLINICAL DIAGNOSTIC PROCEDURES

---

13th Edition (Revised in Aug, 2023)

**[ PROPERTIES ]**

**Source:** Polyclonal antibody preparation

**Host:** Rabbit

**Purification:** Antigen-specific affinity chromatography followed by Protein A affinity chromatography

**Traits:** Liquid

**Concentration:** 0.5mg/mL

**UOM:** 20µL

**Cross Reactivity:** N/A

**Applications:** WB.

**[ IMMUNOGEN ]**

**Immunogen:** Recombinant CD36 (Leu187~Asn428) expressed in *E.coli*

**Accession No.:** RPB530Hu01

**[ APPLICATIONS ]**

Western blotting: 0.01-3µg/mL;

Optimal working dilutions must be determined by end user.

**[ FORMULATION ]**

**Form & Buffer:** Supplied as solution form in 0.01M PBS, pH7.4, containing 0.05% Proclin-300, 50% glycerol.

**[ STORAGE AND STABILITY ]**

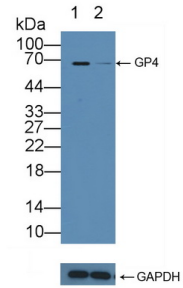
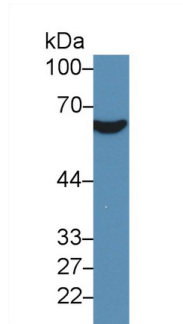
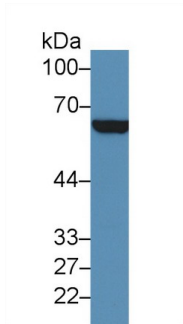
**Storage:** Avoid repeated freeze/thaw cycles.

Store at 4°C for frequent use.

Aliquot and store at -20°C for 24 months.

**Stability Test:** The thermal stability is described by the loss rate. The loss rate was determined by accelerated thermal degradation test, that is, incubate the protein at 37°C for 48h, and no obvious degradation and precipitation were observed. The loss rate is less than 5% within the expiration date under appropriate storage condition.

**[ IDENTIFICATION ]**



Western Blot; Sample: Human HeLa cell lysate; Western Blot; Sample: Human HepG2 cell lysate;

Primary Ab: 3µg/ml Rabbit Anti-Human GP4 Antibody Primary Ab: 3µg/ml Rabbit Anti-Human GP4 Antibody

Second Ab: 0.2µg/mL HRP-Linked Caprine Anti-Rabbit IgG Polyclonal Antibody Second Ab: 0.2µg/mL HRP-Linked Caprine Anti-Rabbit IgG Polyclonal Antibody

(Catalog: SAA544Rb19)

(Catalog: SAA544Rb19)

Knockout Varification:

Lane 1: Wild-type HepG2 cell lysate; Lane 2: GP4 knockout HepG2 cell lysate;

Predicted MW: 53kd

Observed MW: 68kd

Primary Ab: 3µg/ml Rabbit Anti-Human GP4 Antibody

Second Ab: 0.2µg/mL HRP-Linked Caprine Anti-Rabbit IgG Polyclonal Antibody(Catalog: SAA544Rb19)

**[ IMPORTANT NOTE ]**

The kit is designed for research use only, we will not be responsible for any issue if the kit was used in clinical diagnostic or any other procedures.