

PAB180Mu01

Polyclonal Antibody to Clusterin (CLU)

Organism Species: *Mus musculus* (Mouse)

Instruction manual

FOR RESEARCH USE ONLY

NOT FOR USE IN CLINICAL DIAGNOSTIC PROCEDURES

13th Edition (Revised in Aug, 2023)

[PROPERTIES]

Source: Polyclonal antibody preparation

Host: Rabbit

Purification: Antigen-specific affinity chromatography followed by Protein A affinity chromatography

Traits: Liquid

Concentration: 0.5mg/mL

UOM: 100µL

Cross Reactivity: N/A

Applications: WB; IHC

[IMMUNOGEN]

Immunogen: Recombinant CLU (Ser227~Glu448) expressed in *E.coli*

Accession No.: RPB180Mu01

[APPLICATIONS]

Western blotting: 0.01-2µg/mL;

Immunohistochemistry: 5-20µg/mL;

Optimal working dilutions must be determined by end user.

[FORMULATION]

Form & Buffer: Supplied as solution form in 0.01M PBS, pH7.4, containing 0.05% Proclin-300, 50% glycerol.

[STORAGE AND STABILITY]

Storage: Avoid repeated freeze/thaw cycles.

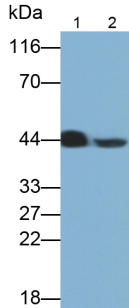
Store at 4°C for frequent use.

Aliquot and store at -20°C for 24 months.

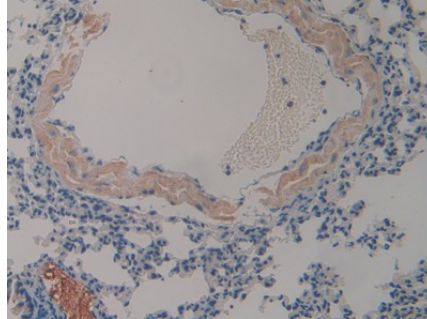
Stability Test: The thermal stability is described by the loss rate. The loss rate was determined by accelerated thermal degradation test, that is, incubate the protein at 37°C for 48h, and no obvious degradation and precipitation were observed. The loss rate is less than 5% within the

expiration date under appropriate storage condition.

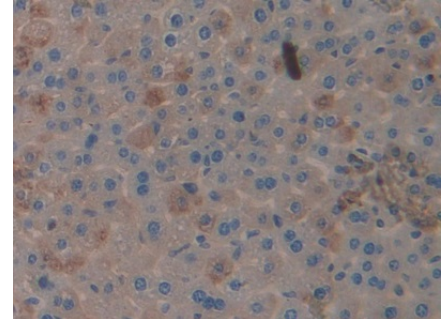
[IDENTIFICATION]



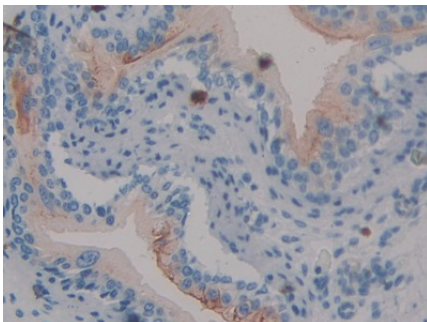
Western Blot; Samples: Lane1: Mouse Plasma; Lane2: Mouse Cerebrum lysate; Primary Ab: 0.3µg/ml Rabbit Anti-Mouse CLU Antibody Second Ab: 0.2µg/ml HRP-Linked Caprine Anti-Rabbit IgG Polyclonal Antibody (Catalog: SAA544Rb19)



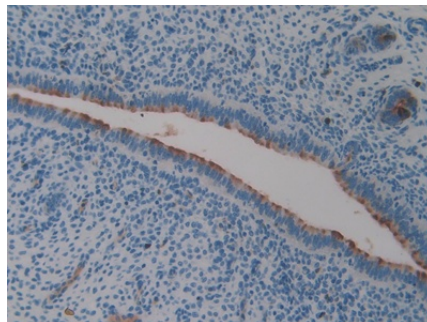
DAB staining on IHC-P; Samples: Mouse Lung Tissue; Primary Ab: 10µg/ml Rabbit Anti-Mouse CLU Antibody Second Ab: 2µg/mL HRP-Linked Caprine Anti-Rabbit IgG Polyclonal Antibody (Catalog: SAA544Rb19)



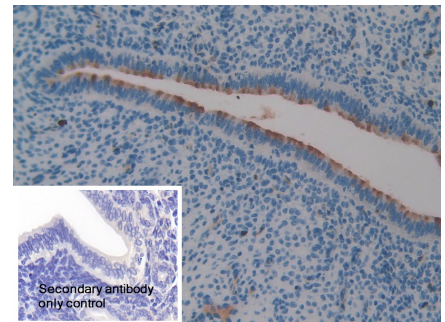
DAB staining on IHC-P; Samples: Mouse Liver Tissue; Primary Ab: 10µg/ml Rabbit Anti-Mouse CLU Antibody Second Ab: 2µg/mL HRP-Linked Caprine Anti-Rabbit IgG Polyclonal Antibody (Catalog: SAA544Rb19)



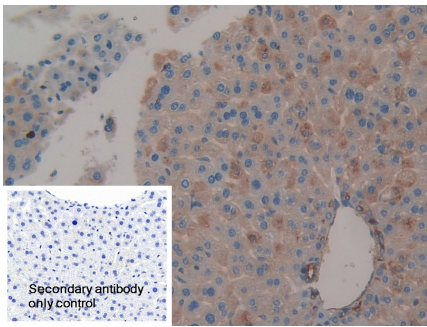
DAB staining on IHC-P; Samples: Mouse Vas Deferens Tissue; Primary Ab: 10µg/ml Rabbit Anti-Mouse CLU Antibody Second Ab: 2µg/mL HRP-Linked Caprine Anti-Rabbit IgG Polyclonal Antibody (Catalog: SAA544Rb19)



DAB staining on IHC-P; Samples: Mouse Uterus Tissue; Primary Ab: 10µg/ml Rabbit Anti-Mouse CLU Antibody Second Ab: 2µg/mL HRP-Linked Caprine Anti-Rabbit IgG Polyclonal Antibody (Catalog: SAA544Rb19)



DAB staining on IHC-P; Sample: Mouse Uterus Tissue Primary Ab: 10µg/ml Rabbit Anti-Mouse CLU Antibody Control: Used PBS instead of primary antibody Second Ab: 2µg/ml HRP-Linked Caprine Anti-Rabbit IgG Polyclonal Antibody (Catalog: SAA544Rb19)



DAB staining on IHC-P;

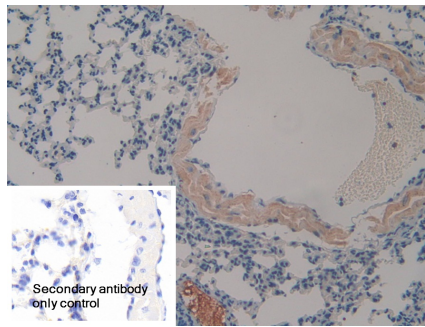
Sample: Mouse Liver Tissue

Primary Ab: 10µg/ml Rabbit Anti-Mouse
CLU Antibody

Control: Used PBS instead of primary
antibody

Second Ab: 2µg/ml HRP-Linked
Caprine Anti-Rabbit IgG Polyclonal
Antibody

(Catalog: SAA544Rb19)



DAB staining on IHC-P;

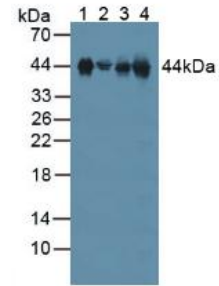
Sample: Mouse Lung Tissue

Primary Ab: 10µg/ml Rabbit Anti-Mouse
CLU Antibody

Control: Used PBS instead of primary
antibody

Second Ab: 2µg/ml HRP-Linked
Caprine Anti-Rabbit IgG Polyclonal
Antibody

(Catalog: SAA544Rb19)



Western Blot; Samples: Lane1: Mouse

Serum; Lane2: Mouse Heart lysate;

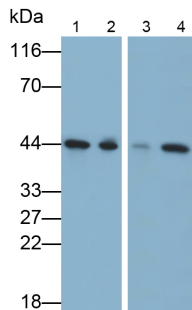
Lane3: Mouse Lung lysate; Lane4:

Mouse Stomach lysate;

Primary Ab: 2µg/ml Rabbit Anti-Mouse
CLU Antibody

Second Ab: 0.2µg/ml HRP-Linked
Caprine Anti-Rabbit IgG Polyclonal
Antibody

(Catalog: SAA544Rb19)



Western Blot; Samples: Lane1: Rat

Cerebrum lysate; Lane2: Rat Testis

lysate; Lane3: HeLa cell lysate; Lane4:

A549 cell lysate;

Primary Ab: 0.3µg/ml Rabbit Anti-
Mouse CLU Antibody

Second Ab: 0.2µg/ml HRP-Linked
Caprine Anti-Rabbit IgG Polyclonal
Antibody

(Catalog: SAA544Rb19)

[IMPORTANT NOTE]

The kit is designed for research use only, we will not be responsible for any issue if the kit was used in clinical diagnostic or any other procedures.