

**PAA861Ra01**

**Polyclonal Antibody to Complement Component 3 (C3)**

**Organism Species: *Rattus norvegicus* (Rat)**

***Instruction manual***

FOR RESEARCH USE ONLY

NOT FOR USE IN CLINICAL DIAGNOSTIC PROCEDURES

---

13th Edition (Revised in Aug, 2023)

**[ PROPERTIES ]**

**Source:** Polyclonal antibody preparation

**Host:** Rabbit

**Purification:** Antigen-specific affinity chromatography followed by Protein A affinity chromatography

**Traits:** Liquid

**Concentration:** 0.26mg/mL

**UOM:** 20µL

**Cross Reactivity:** Mouse

**Applications:** WB

**[ IMMUNOGEN ]**

**Immunogen:** Recombinant Complement Component 3 (Asp966~Trp1313) expressed in *E.coli*

**Accession No.:** RPA861Ra01

**[ APPLICATIONS ]**

Western blotting: 0.01-2µg/mL;

Optimal working dilutions must be determined by end user.

**[ FORMULATION ]**

**Form & Buffer:** Supplied as solution form in PBS, pH7.4, containing 0.02% NaN<sub>3</sub>, 50% glycerol.

**[ STORAGE AND STABILITY ]**

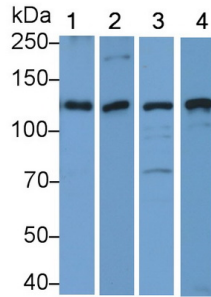
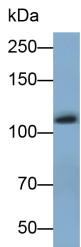
**Storage:** Avoid repeated freeze/thaw cycles.

Store at 4°C for frequent use.

Aliquot and store at -20°C for 24 months.

**Stability Test:** The thermal stability is described by the loss rate. The loss rate was determined by accelerated thermal degradation test, that is, incubate the protein at 37°C for 48h, and no obvious degradation and precipitation were observed. The loss rate is less than 5% within the expiration date under appropriate storage condition.

**[ IDENTIFICATION ]**



Western Blot; Sample: Mouse Serum  
 Primary Ab: 0.02µg/ml Rabbit Anti-Rat  
 C3 Antibody Second Ab: 0.2µg/ml HRP-  
 Linked Caprine Anti-Rabbit IgG  
 Polyclonal Antibody (Catalog:  
 SAA544Rb19)

Western Blot; Sample: Lane1: Rat  
 Plasma; Lane2: Rat Liver lysate;  
 Lane3: Rat Serum; Lane4: Mouse  
 Serum  
 Primary Ab: 0.04µg/ml Rabbit Anti-Rat  
 C3 Antibody  
 Second Ab: 0.2µg/mL HRP-Linked  
 Caprine Anti-Rabbit IgG Polyclonal  
 Antibody  
 (Catalog: SAA544Rb19)

**[ IMPORTANT NOTE ]**

The kit is designed for research use only, we will not be responsible for any issue if the kit was used in clinical diagnostic or any other procedures.