

PAD784Ra01

Polyclonal Antibody to Complement Component 8a (C8a)

Organism Species: *Rattus norvegicus* (Rat)

Instruction manual

FOR RESEARCH USE ONLY

NOT FOR USE IN CLINICAL DIAGNOSTIC PROCEDURES

13th Edition (Revised in Aug, 2023)

[PROPERTIES]

Source: Polyclonal antibody preparation

Host: Rabbit

Purification: Antigen-specific affinity chromatography followed by Protein A affinity chromatography

Traits: Liquid

Concentration: 0.5mg/mL

UOM: 100µL

Cross Reactivity: N/A

Applications: WB

[IMMUNOGEN]

Immunogen: Recombinant C8a (Gln21~His300) expressed in *E.coli*

Accession No.: RPD784Ra01

[APPLICATIONS]

Western blotting: 0.01-2µg/mL;

Optimal working dilutions must be determined by end user.

[FORMULATION]

Form & Buffer: Supplied as solution form in 0.01M PBS, pH7.4, containing 0.05% Proclin-300, 50% glycerol.

[STORAGE AND STABILITY]

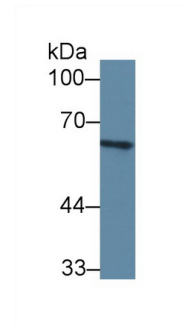
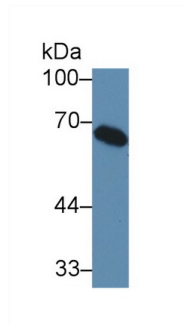
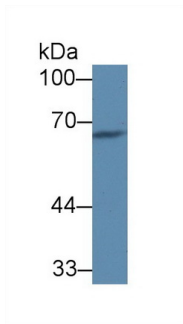
Storage: Avoid repeated freeze/thaw cycles.

Store at 4°C for frequent use.

Aliquot and store at -20°C for 24 months.

Stability Test: The thermal stability is described by the loss rate. The loss rate was determined by accelerated thermal degradation test, that is, incubate the protein at 37°C for 48h, and no obvious degradation and precipitation were observed. The loss rate is less than 5% within the expiration date under appropriate storage condition.

[IDENTIFICATION]



Western Blot; Sample: Rat Heart lysate;	Western Blot; Sample: Rat Serum;	Western Blot; Sample: Rat Gallbladder
Primary Ab: 1µg/ml Rabbit Anti-Rat C8a	Primary Ab: 1µg/ml Rabbit Anti-Rat C8a	lysate;
Antibody	Antibody	Primary Ab: 1µg/ml Rabbit Anti-Rat C8a
Second Ab: 0.2µg/mL HRP-Linked	Second Ab: 0.2µg/mL HRP-Linked	Antibody
Caprine Anti-Rabbit IgG Polyclonal	Caprine Anti-Rabbit IgG Polyclonal	Second Ab: 0.2µg/mL HRP-Linked
Antibody	Antibody	Caprine Anti-Rabbit IgG Polyclonal
(Catalog: SAA544Rb19)	(Catalog: SAA544Rb19)	Antibody
		(Catalog: SAA544Rb19)

[IMPORTANT NOTE]

The kit is designed for research use only, we will not be responsible for any issue if the kit was used in clinical diagnostic or any other procedures.