

PAA277Ra01

Polyclonal Antibody to Connexin 43 (CX43)

Organism Species: *Rattus norvegicus* (Rat)

Instruction manual

FOR RESEARCH USE ONLY

NOT FOR USE IN CLINICAL DIAGNOSTIC PROCEDURES

13th Edition (Revised in Aug, 2023)

[PROPERTIES]

Source: Polyclonal antibody preparation

Host: Rabbit

Purification: Antigen-specific affinity chromatography followed by Protein A affinity chromatography

Traits: Liquid

Concentration: 0.5mg/mL

UOM: 100µL

Cross Reactivity: Human;Mouse

Applications: WB; IHC

[IMMUNOGEN]

Immunogen: Recombinant CX43 (Ser180~Ile382) expressed in *E.coli*

Accession No.: RPA277Ra01

[APPLICATIONS]

Western blotting: 0.01-3µg/mL;

Immunohistochemistry: 5-20µg/mL;

Optimal working dilutions must be determined by end user.

[FORMULATION]

Form & Buffer: Supplied as solution form in 0.01M PBS, pH7.4, containing 0.05% Proclin-300, 50% glycerol.

[STORAGE AND STABILITY]

Storage: Avoid repeated freeze/thaw cycles.

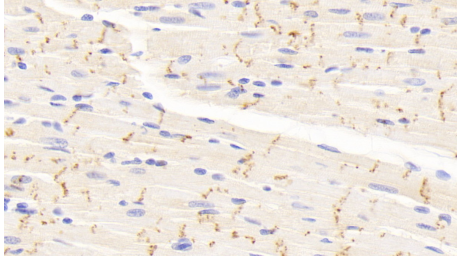
Store at 4°C for frequent use.

Aliquot and store at -20°C for 24 months.

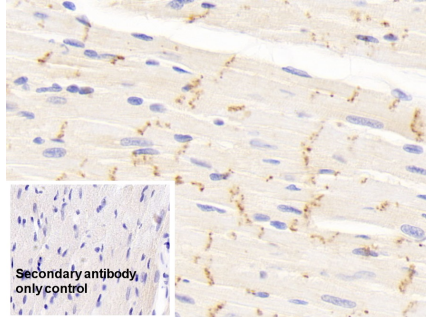
Stability Test: The thermal stability is described by the loss rate. The loss rate was determined by accelerated thermal degradation test, that is, incubate the protein at 37°C for 48h, and no obvious degradation and precipitation were observed. The loss rate is less than 5% within the

expiration date under appropriate storage condition.

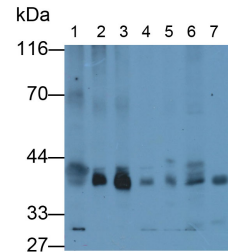
[IDENTIFICATION]



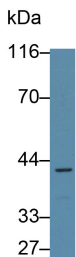
DAB staining on IHC-P; Samples: Rat Cardiac Muscle Tissue; Primary Ab: 10 μ g/ml Rabbit Anti-Rat CX43 Antibody
 Second Ab: 2 μ g/ml HRP-Linked Caprine Anti-Rabbit IgG Polyclonal Antibody (Catalog: SAA544Rb19)



DAB staining on IHC-P; Sample: Rat Cardiac Muscle Tissue
 Primary Ab: 10 μ g/ml Rabbit Anti-Rat CX43 Antibody
 Control: Used PBS instead of primary antibody
 Second Ab: 2 μ g/ml HRP-Linked Caprine Anti-Rabbit IgG Polyclonal Antibody (Catalog: SAA544Rb19)



Western Blot; Samples: Lane1: Rat Heart lysate; Lane2: Rat Cerebrum lysate; Lane3: Rat Cerebellum lysate; Lane4: Mouse Cerebrum lysate; Lane5: Mouse Cerebellum lysate; Lane6: U87MG cell lysate; Lane7: SK-N-SH cell lysate;
 Primary Ab: 3 μ g/ml Rabbit Anti-Rat CX43 Antibody
 Second Ab: 0.2 μ g/ml HRP-Linked Caprine Anti-Rabbit IgG Polyclonal Antibody (Catalog: SAA544Rb19)



Western Blot; Sample: Hela cell lysate
 Primary Ab: 1 μ g/ml Rabbit Anti-Rat CX43 Antibody
 Second Ab: 0.2 μ g/ml HRP-Linked Caprine Anti-Rabbit IgG Polyclonal Antibody

(Catalog: SAA544Rb19)

[IMPORTANT NOTE]

The kit is designed for research use only, we will not be responsible for any issue if the kit was used in clinical diagnostic or any other procedures.