

PAB888Mu01

Polyclonal Antibody to Cyclin Dependent Kinase 1 (CDK1)

Organism Species: *Mus musculus* (Mouse)

Instruction manual

FOR RESEARCH USE ONLY

NOT FOR USE IN CLINICAL DIAGNOSTIC PROCEDURES

13th Edition (Revised in Aug, 2023)

[PROPERTIES]

Source: Polyclonal antibody preparation

Host: Rabbit

Purification: Antigen-specific affinity chromatography followed by Protein A affinity chromatography

Traits: Liquid

Concentration: 0.5mg/mL

UOM: 10µL

Cross Reactivity: Human

Applications: WB; ICC/IF

[IMMUNOGEN]

Immunogen: Recombinant CDK1 (Gly13~Met297) expressed in *E.coli*

Accession No.: RPB888Mu01

[APPLICATIONS]

Western blotting: 0.01-2µg/mL;

Immunofluorescence:5-20µg/mL;

Optimal working dilutions must be determined by end user.

[FORMULATION]

Form & Buffer: Supplied as solution form in PBS, pH7.4, containing 0.02% NaN₃, 50% glycerol.

[STORAGE AND STABILITY]

Storage: Avoid repeated freeze/thaw cycles.

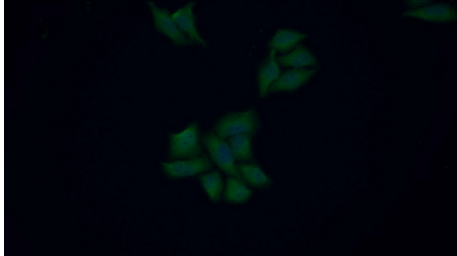
Store at 4°C for frequent use.

Aliquot and store at -20°C for 24 months.

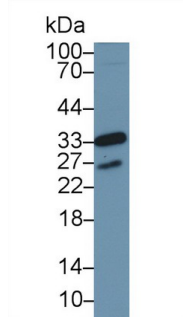
Stability Test: The thermal stability is described by the loss rate. The loss rate was determined by accelerated thermal degradation test, that is, incubate the protein at 37°C for 48h, and no obvious degradation and precipitation were observed. The loss rate is less than 5% within the

expiration date under appropriate storage condition.

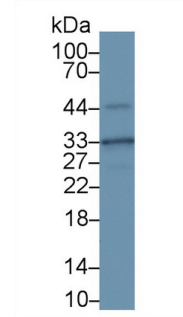
[IDENTIFICATION]



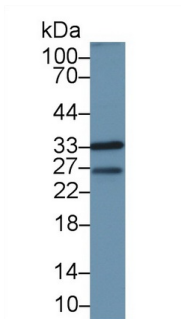
FITC staining on IF; Samples: Human MCF7 cell; Primary Ab: 20 μ g/ml Rabbit Anti-Mouse CDK1 Antibody Second Ab: 1.5 μ g/ml FITC-Linked Caprine Anti-Rabbit IgG Polyclonal Antibody (Catalog: SAA544Rb18)



Western Blot; Sample: Human MCF7 cell lysate; Primary Ab: 1 μ g/ml Rabbit Anti-Mouse CDK1 Antibody Second Ab: 0.2 μ g/ml HRP-Linked Caprine Anti-Rabbit IgG Polyclonal Antibody (Catalog: SAA544Rb19)



Western Blot; Sample: Mouse Spleen lysate; Primary Ab: 1 μ g/ml Rabbit Anti-Mouse CDK1 Antibody Second Ab: 0.2 μ g/ml HRP-Linked Caprine Anti-Rabbit IgG Polyclonal Antibody (Catalog: SAA544Rb19)



Western Blot; Sample: Human HeLa cell lysate; Primary Ab: 1 μ g/ml Rabbit Anti-Mouse CDK1 Antibody Second Ab: 0.2 μ g/ml HRP-Linked Caprine Anti-Rabbit IgG Polyclonal Antibody (Catalog: SAA544Rb19)

[IMPORTANT NOTE]

The kit is designed for research use only, we will not be responsible for any issue if the kit was used in clinical diagnostic or any other procedures.