

PAE624Hu01

Polyclonal Antibody to Cyclin Dependent Kinase Inhibitor 1A (CDKN1A)

Organism Species: *Homo sapiens* (Human)

Instruction manual

FOR RESEARCH USE ONLY

NOT FOR USE IN CLINICAL DIAGNOSTIC PROCEDURES

13th Edition (Revised in Aug, 2023)

[PROPERTIES]

Source: Polyclonal antibody preparation

Host: Rabbit

Purification: Antigen-specific affinity chromatography followed by Protein A affinity chromatography

Traits: Liquid

Concentration: 0.5mg/mL

UOM: 100µL

Cross Reactivity: Rat

Applications: WB; IHC

[IMMUNOGEN]

Immunogen: Recombinant CDKN1A (Met1~Pro164) expressed in *E.coli*

Accession No.: RPE624Hu01

[APPLICATIONS]

Western blotting: 0.01-3µg/mL;

Immunohistochemistry: 5-30µg/mL;

Optimal working dilutions must be determined by end user.

[FORMULATION]

Form & Buffer: Supplied as solution form in PBS, pH7.4, containing 0.02% NaN₃, 50% glycerol.

[STORAGE AND STABILITY]

Storage: Avoid repeated freeze/thaw cycles.

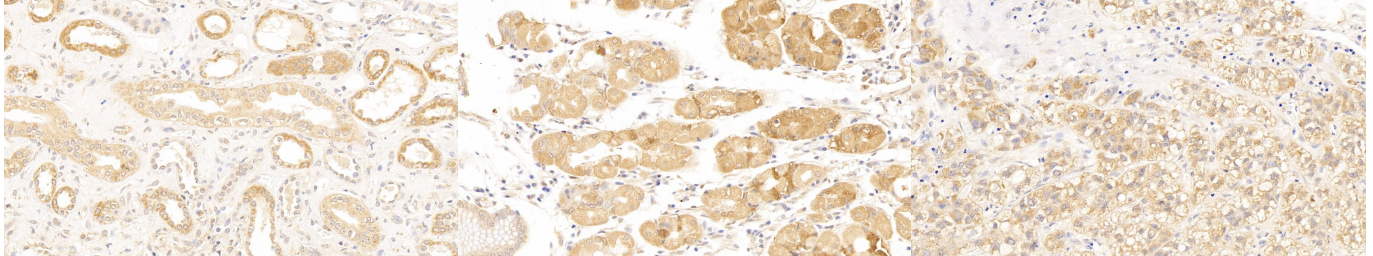
Store at 4°C for frequent use.

Aliquot and store at -20°C for 24 months.

Stability Test: The thermal stability is described by the loss rate. The loss rate was determined by accelerated thermal degradation test, that is, incubate the protein at 37°C for 48h, and no obvious degradation and precipitation were observed. The loss rate is less than 5% within the

expiration date under appropriate storage condition.

[IDENTIFICATION]



DAB staining on IHC-P;

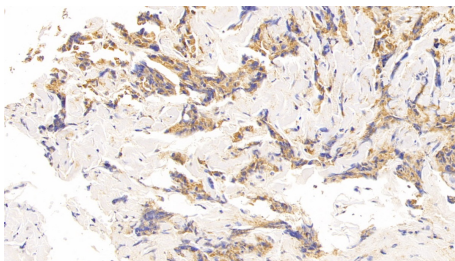
Samples: Human Kidney Tissue;
 Primary Ab: 10ug/ml Rabbit Anti-Human CDKN1A Antibody
 Second Ab: 2µg/mL HRP-Linked Caprine Anti-Rabbit IgG Polyclonal Antibody
 (Catalog: SAA544Rb19)

DAB staining on IHC-P;

Samples: Human Stomach Tissue;
 Primary Ab: 10ug/ml Rabbit Anti-Human CDKN1A Antibody
 Second Ab: 2µg/mL HRP-Linked Caprine Anti-Rabbit IgG Polyclonal Antibody
 (Catalog: SAA544Rb19)

DAB staining on IHC-P;

Samples: Human Liver cancer Tissue;
 Primary Ab: 10ug/ml Rabbit Anti-Human CDKN1A Antibody
 Second Ab: 2µg/mL HRP-Linked Caprine Anti-Rabbit IgG Polyclonal Antibody
 (Catalog: SAA544Rb19)



DAB staining on IHC-P;

Samples: Human Breast cancer Tissue;
 Primary Ab: 10ug/ml Rabbit Anti-Human CDKN1A Antibody
 Second Ab: 2µg/mL HRP-Linked Caprine Anti-Rabbit IgG Polyclonal Antibody
 (Catalog: SAA544Rb19)

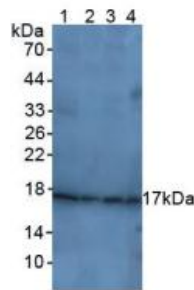
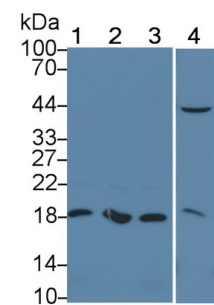


Figure. Western Blot; Sample: Lane1: Rat Brain Tissue; Lane2: Human Liver Tissue; Lane3: Human Hela Cells; Lane4: Rat Uterus Tissue.



Western Blot; Sample: Lane1: Rat Cerebrum lysate; Lane2: Rat Uterus lysate; Lane3: Hela cell lysate; Lane4: MCF7 cell lysate
 Primary Ab: 3µg/ml Rabbit Anti-Human CDKN1A Antibody
 Second Ab: 0.2µg/mL HRP-Linked Caprine Anti-Rabbit IgG Polyclonal Antibody
 (Catalog: SAA544Rb19)

[IMPORTANT NOTE]

The kit is designed for research use only, we will not be responsible for any issue if the kit was used in clinical diagnostic or any other procedures.