

PAB528Hu01

Polyclonal Antibody to Cyclophilin 40 (CYP-40)

Organism Species: *Homo sapiens (Human)*

Instruction manual

FOR RESEARCH USE ONLY

NOT FOR USE IN CLINICAL DIAGNOSTIC PROCEDURES

13th Edition (Revised in Aug, 2023)

[**PROPERTIES**]

Source: Polyclonal antibody preparation

Host: Rabbit

Purification: Antigen-specific affinity chromatography followed by Protein A affinity chromatography

Traits: Liquid

Concentration: 0.5mg/mL

UOM: 100µL

Cross Reactivity: Mouse;Rat

Applications: WB; IHC; ICC/IF

[**IMMUNOGEN**]

Immunogen: Recombinant CYP-40 (Gln7~Pro206) expressed in *E.coli*

Accession No.: RPB528Hu01

[**APPLICATIONS**]

Western blotting: 0.01-3µg/mL;

Immunohistochemistry: 5-20µg/mL;

Immunofluorescence: 5-20µg/mL;

Optimal working dilutions must be determined by end user.

[**FORMULATION**]

Form & Buffer: Supplied as solution form in 0.01M PBS, pH7.4, containing 0.05% Proclin-300, 50% glycerol.

[**STORAGE AND STABILITY**]

Storage: Avoid repeated freeze/thaw cycles.

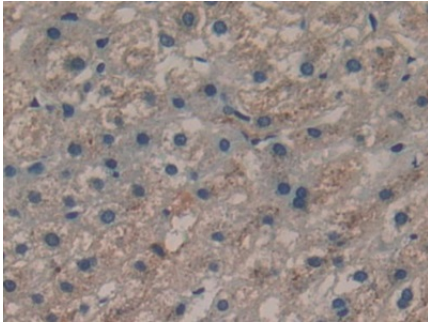
Store at 4°C for frequent use.

Aliquot and store at -20°C for 24 months.

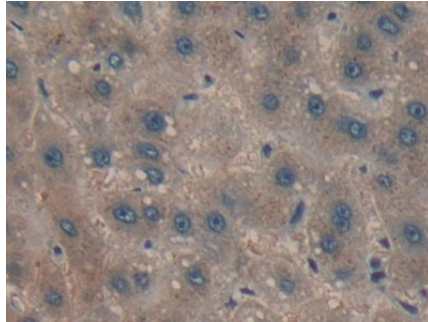
Stability Test: The thermal stability is described by the loss rate. The loss rate was determined by accelerated thermal degradation test, that is, incubate the protein at 37°C for 48h, and no

obvious degradation and precipitation were observed. The loss rate is less than 5% within the expiration date under appropriate storage condition.

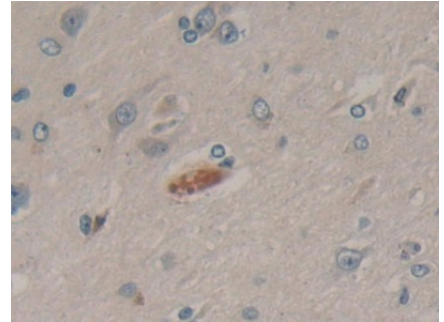
[IDENTIFICATION]



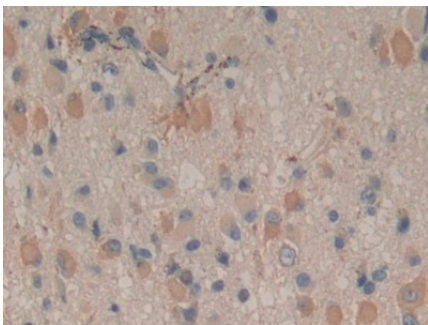
DAB staining on IHC-P; Samples: Human Liver Tissue; Primary Ab: 10µg/ml Rabbit Anti-Human CYPD Antibody Second Ab: 2µg/mL HRP-Linked Caprine Anti-Rabbit IgG Polyclonal Antibody (Catalog: SAA544Rb19)



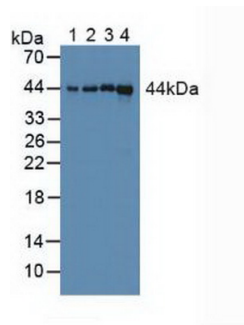
DAB staining on IHC-P; Samples: Human Liver cancer Tissue; Primary Ab: 10µg/ml Rabbit Anti-Human CYPD Antibody Second Ab: 2µg/mL HRP-Linked Caprine Anti-Rabbit IgG Polyclonal Antibody (Catalog: SAA544Rb19)



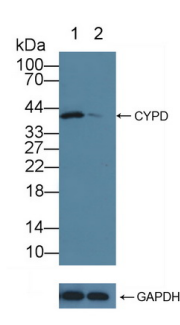
DAB staining on IHC-P; Samples: Human Brain Tissue; Primary Ab: 10µg/ml Rabbit Anti-Human CYPD Antibody Second Ab: 2µg/mL HRP-Linked Caprine Anti-Rabbit IgG Polyclonal Antibody (Catalog: SAA544Rb19)



DAB staining on IHC-P; Samples: Human Glioma Tissue; Primary Ab: 10µg/ml Rabbit Anti-Human CYPD Antibody Second Ab: 2µg/mL HRP-Linked Caprine Anti-Rabbit IgG Polyclonal Antibody (Catalog: SAA544Rb19)



Western Blot; Sample: A549 cell lysate; Lane2: Mouse Spleen lysate; Lane3: Mouse Cerebrum lysate; Lane4: Rat Cerebrum lysate Primary Ab: 3ug/ml Rabbit Anti-Human CYP-40 Antibody Second Ab: 0.2µg/mL HRP-Linked Caprine Anti-Rabbit IgG Polyclonal Antibody

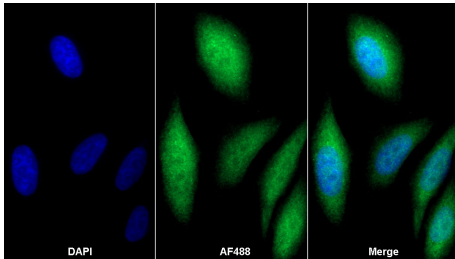


Knockout Varification: Lane 1: Wild-type A549 cell lysate; Lane 2: CYPD knockout A549 cell lysate; Predicted MW: 41kd Observed MW: 43kd Primary Ab: 3µg/ml Rabbit Anti-Human CYPD Antibody Second Ab: 0.2µg/mL HRP-Linked

(Catalog: SAA544Rb19)

Caprine Anti-Rabbit IgG Polyclonal
Antibody

(Catalog: SAA544Rb19)



AF488 staining on IF;

Sample: HepG2 cell

Primary Ab: 20µg/ml Rabbit Anti-
Human CYP-40 Antibody

Second Ab: 2?g/ml AF488-Linked
Caprine Anti-Rabbit IgG Polyclonal

Antibody

(Catalog: SAA544Rb11)

[**IMPORTANT NOTE**]

The kit is designed for research use only, we will not be responsible for any issue if the kit was used in clinical diagnostic or any other procedures.