

**PAA979Hu01**

**Polyclonal Antibody to Cyclophilin A (CYPA)**

**Organism Species: *Homo sapiens* (Human)**

***Instruction manual***

FOR RESEARCH USE ONLY

NOT FOR USE IN CLINICAL DIAGNOSTIC PROCEDURES

---

13th Edition (Revised in Aug, 2023)

**[ PROPERTIES ]**

**Source:** Polyclonal antibody preparation

**Host:** Rabbit

**Purification:** Antigen-specific affinity chromatography followed by Protein A affinity chromatography

**Traits:** Liquid

**Concentration:** 0.5mg/mL

**UOM:** 100µL

**Cross Reactivity:** Mouse;Rat;Porcine

**Applications:** WB; IHC; ICC/IF; FCM

**[ IMMUNOGEN ]**

**Immunogen:** Recombinant CYPA (Val2~Glu165) expressed in *E.coli*

**Accession No.:** RPA979Hu01

**[ APPLICATIONS ]**

Western blotting: 0.01-2µg/mL;

Immunohistochemistry: 5-20µg/mL;

Immunofluorescence: 5-20µg/mL;

Flow cytometry: 20µg/mL;

Optimal working dilutions must be determined by end user.

**[ FORMULATION ]**

**Form & Buffer:** Supplied as solution form in PBS, pH7.4, containing 0.02% NaN<sub>3</sub>, 50% glycerol.

**[ STORAGE AND STABILITY ]**

**Storage:** Avoid repeated freeze/thaw cycles.

Store at 4°C for frequent use.

Aliquot and store at -20°C for 24 months.

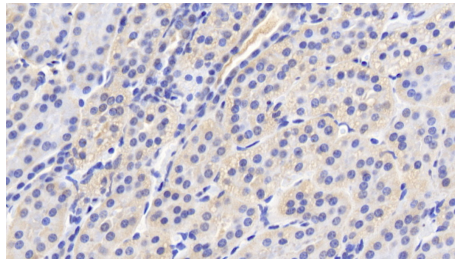
**Stability Test:** The thermal stability is described by the loss rate. The loss rate was determined

by accelerated thermal degradation test, that is, incubate the protein at 37°C for 48h, and no obvious degradation and precipitation were observed. The loss rate is less than 5% within the expiration date under appropriate storage condition.

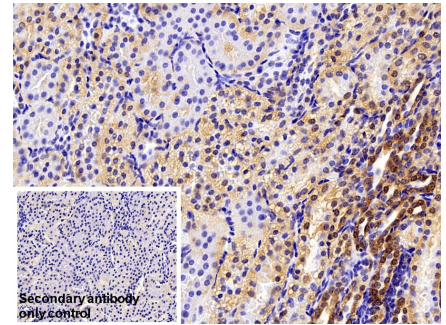
**[ IDENTIFICATION ]**



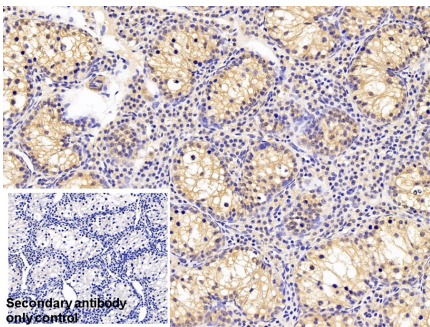
Western Blot; Samples: Lane1: LO2 cell lysate; Lane2: U87MG cell lysate;  
 Primary Ab: 0.02µg/ml Rabbit Anti-Human CYPA Antibody Second Ab: 0.2µg/ml HRP-Linked Caprine Anti-Rabbit IgG Polyclonal Antibody  
 (Catalog: SAA544Rb19)



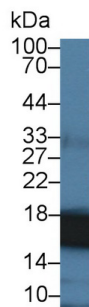
DAB staining on IHC-P; Samples: Human Kidney Tissue; Primary Ab: 20µg/ml Rabbit Anti-Human CYPA Antibody Second Ab: 2µg/mL HRP-Linked Caprine Anti-Rabbit IgG Polyclonal Antibody (Catalog: SAA544Rb19)



DAB staining on IHC-P; Sample: Porcine Kidney Tissue Primary Ab: 10µg/ml Rabbit Anti-Human CYPA Antibody Control: Used PBS instead of primary antibody Second Ab: 2µg/ml HRP-Linked Caprine Anti-Rabbit IgG Polyclonal Antibody  
 (Catalog: SAA544Rb19)



DAB staining on IHC-P; Sample: Porcine Testis Tissue Primary Ab: 10µg/ml Rabbit Anti-Human CYPA Antibody Control: Used PBS instead of primary antibody



Western Blot; Sample: Human Liver lysate; Primary Ab: 4µg/ml Rabbit Anti-Human CYPA Antibody Second Ab: 0.2µg/mL HRP-Linked Caprine Anti-Rabbit IgG Polyclonal

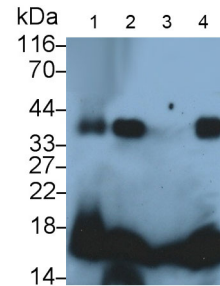
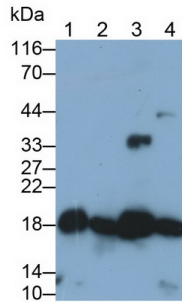
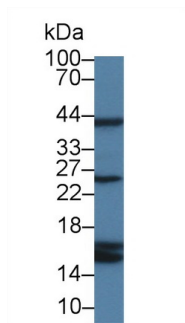


Western Blot; Sample: Human Serum; Primary Ab: 4µg/ml Rabbit Anti-Human CYPA Antibody Second Ab: 0.2µg/mL HRP-Linked Caprine Anti-Rabbit IgG Polyclonal Antibody

Second Ab: 2?g/ml HRP-Linked  
Caprine Anti-Rabbit IgG Polyclonal  
Antibody  
(Catalog: SAA544Rb19)

Antibody  
(Catalog: SAA544Rb19)

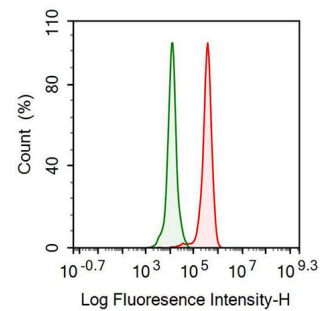
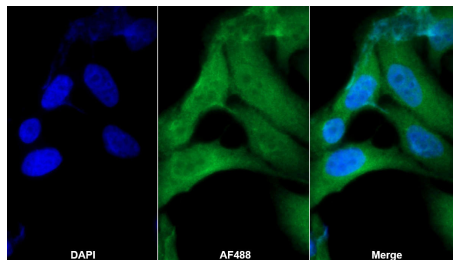
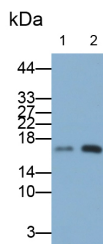
(Catalog: SAA544Rb19)



Western Blot; Sample: Rat Serum;  
Primary Ab: 4µg/ml Rabbit Anti-Human  
CYPA Antibody  
Second Ab: 0.2µg/mL HRP-Linked  
Caprine Anti-Rabbit IgG Polyclonal  
Antibody  
(Catalog: SAA544Rb19)

Western Blot; Sample: Lane1: Mouse  
Liver lysate; Lane2: Mouse Cerebrum  
lysate; Lane3: HepG2 cell lysate;  
Lane4: Jurkat cell lysate  
Primary Ab: 0.05µg/ml Rabbit Anti-  
Human CYPA Antibody  
Second Ab: 0.2µg/mL HRP-Linked  
Caprine Anti-Rabbit IgG Polyclonal  
Antibody  
(Catalog: SAA544Rb19)

Western Blot; Samples: Lane1: Mouse  
Testis lysate; Lane2: Mouse Cerebrum  
lysate; Lane3: Rat Lung lysate; Lane4:  
Hela cell lysate;  
Primary Ab: 0.1µg/ml Rabbit Anti-  
Human CYPA Antibody  
Second Ab: 0.2?g/ml HRP-Linked  
Caprine Anti-Rabbit IgG Polyclonal  
Antibody  
(Catalog: SAA544Rb19)



Western Blot; Samples: Lane1: Porcine  
Liver lysate; Lane2: Porcine Cerebrum  
lysate;  
Primary Ab: 0.02µg/ml Rabbit Anti-  
Human CYPA Antibody  
Second Ab: 0.2µg/ml HRP-Linked  
Caprine Anti-Rabbit IgG Polyclonal

AF488 staining on IF;  
Sample: HeLa cell  
Primary Ab: 20µg/ml Rabbit Anti-  
Human CYPA Antibody  
Second Ab: 2?g/ml AF488-Linked  
Caprine Anti-Rabbit IgG Polyclonal  
Antibody  
(Catalog: SAA544Rb11)

Human HeLa cell line was fixed with 2%  
paraformaldehyde (10 min) ,  
permeabilised with 0.1% BSA-Triton  
X-100, then stained with 20µg/ml rabbit  
Anti-human CYPA Polyclonal Antibody  
(Catalog PAA979Hu01, red histogram)  
or Isotype control antibody (Catalog

Antibody  
(Catalog: SAA544Rb19)

IS067-Rb01, green histogram), followed  
by 1µg/ml FITC-conjugated Anti-rabbit  
IgG Secondary Antibody (Catalog  
SAA544Rb18).

**[ IMPORTANT NOTE ]**

The kit is designed for research use only, we will not be responsible for any issue if the kit was used in clinical diagnostic or any other procedures.