

PAD302Hu01

Polyclonal Antibody to Cytochrome P450 2D6 (CYP2D6)

Organism Species: *Homo sapiens (Human)*

Instruction manual

FOR RESEARCH USE ONLY

NOT FOR USE IN CLINICAL DIAGNOSTIC PROCEDURES

13th Edition (Revised in Aug, 2023)

[PROPERTIES]

Source: Polyclonal antibody preparation

Host: Rabbit

Purification: Antigen-specific affinity chromatography followed by Protein A affinity chromatography

Traits: Liquid

Concentration: 0.5mg/mL

UOM: 100µL

Cross Reactivity: Mouse;Rat;Porcine.

Applications: WB; IHC; ICC; IP.

[IMMUNOGEN]

Immunogen: Recombinant CYP2D6 (Leu236~Gln472) expressed in *E.coli*

Accession No.: RPD302Hu01

[APPLICATIONS]

Western blotting: 0.01-2µg/mL;

Immunohistochemistry: 5-20µg/mL;

Immunocytochemistry: 5-20µg/mL;

Optimal working dilutions must be determined by end user.

[FORMULATION]

Form & Buffer: Supplied as solution form in 0.01M PBS, pH7.4, containing 0.05% Proclin-300, 50% glycerol.

[STORAGE AND STABILITY]

Storage: Avoid repeated freeze/thaw cycles.

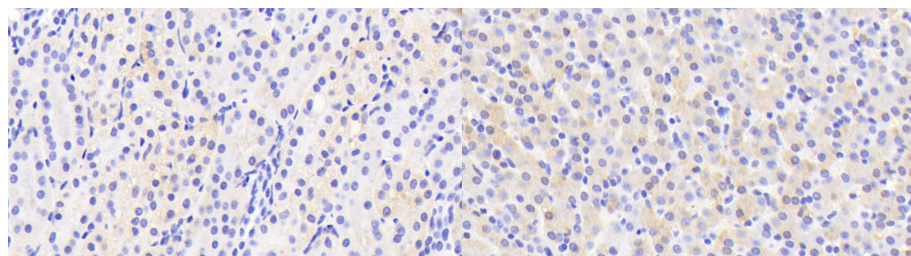
Store at 4°C for frequent use.

Aliquot and store at -20°C for 24 months.

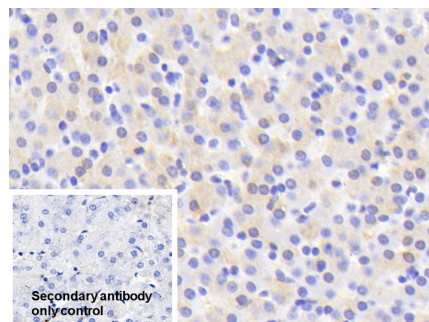
Stability Test: The thermal stability is described by the loss rate. The loss rate was determined by accelerated thermal degradation test, that is, incubate the protein at 37°C for 48h, and no

obvious degradation and precipitation were observed. The loss rate is less than 5% within the expiration date under appropriate storage condition.

[IDENTIFICATION]

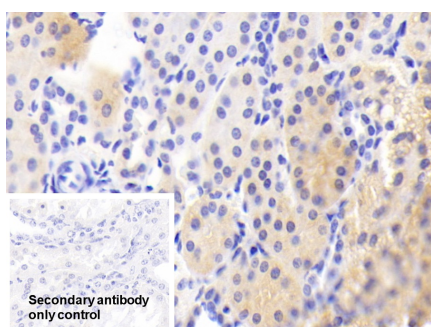


DAB staining on IHC-P; Samples:
Human Kidney Tissue; Primary Ab:
20?g/ml Rabbit Anti-Human CYP2D6
Antibody Second Ab: 2μg/mL HRP-
Linked Caprine Anti-Rabbit IgG
Polyclonal Antibody (Catalog:
SAA544Rb19)

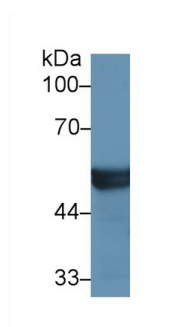


DAB staining on IHC-P;
Samples: Human Liver Tissue;
Primary Ab: 20?g/ml Rabbit Anti-
Human CYP2D6 Antibody
Second Ab: 2μg/mL HRP-Linked
Caprine Anti-Rabbit IgG Polyclonal
Antibody
(Catalog: SAA544Rb19)

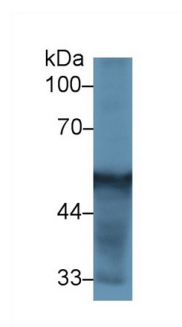
DAB staining on IHC-P;
Sample: Human Liver Tissue
Primary Ab: 20μg/ml Rabbit Anti-
Human CYP2D6 Antibody
Control: Used PBS instead of primary
antibody
Second Ab: 2μg/ml HRP-Linked
Caprine Anti-Rabbit IgG Polyclonal
Antibody
(Catalog: SAA544Rb19)



DAB staining on IHC-P;
Sample: Human Kidney Tissue
Primary Ab: 20μg/ml Rabbit Anti-
Human CYP2D6 Antibody
Control: Used PBS instead of primary
antibody
Second Ab: 2μg/ml HRP-Linked



Western Blot; Sample: Mouse Liver
lysate;
Primary Ab: 1μg/ml Rabbit Anti-Human
CYP2D6 Antibody
Second Ab: 0.2μg/mL HRP-Linked
Caprine Anti-Rabbit IgG Polyclonal
Antibody



Western Blot; Sample: Rat Liver lysate;
Primary Ab: 1μg/ml Rabbit Anti-Human
CYP2D6 Antibody
Second Ab: 0.2μg/mL HRP-Linked
Caprine Anti-Rabbit IgG Polyclonal
Antibody
(Catalog: SAA544Rb19)

Caprine Anti-Rabbit IgG Polyclonal

(Catalog: SAA544Rb19)

Antibody

(Catalog: SAA544Rb19)

[IMPORTANT NOTE]

The kit is designed for research use only, we will not be responsible for any issue if the kit was used in clinical diagnostic or any other procedures.