

PAA988Mu02

Polyclonal Antibody to Cytochrome P450 2E1 (CYP2E1)

Organism Species: *Mus musculus* (Mouse)

Instruction manual

FOR RESEARCH USE ONLY

NOT FOR USE IN CLINICAL DIAGNOSTIC PROCEDURES

13th Edition (Revised in Aug, 2023)

[**PROPERTIES**]

Source: Polyclonal antibody preparation

Host: Rabbit

Purification: Antigen-specific affinity chromatography followed by Protein A affinity chromatography

Traits: Liquid

Concentration: 0.5mg/mL

UOM: 20 μ L

Cross Reactivity: Human;Rat

Applications: WB; IHC; ICC/IF

[**IMMUNOGEN**]

Immunogen: Recombinant CYP2E1 (Pro34~Met273) expressed in *E.coli*

Accession No.: RPA988Mu02

[**APPLICATIONS**]

Western blotting: 0.01-2 μ g/mL;

Immunohistochemistry: 5-20 μ g/mL;

Immunofluorescence: 5-20 μ g/mL;

Optimal working dilutions must be determined by end user.

[**FORMULATION**]

Form & Buffer: Supplied as solution form in 0.01M PBS, pH7.4, containing 0.05% Proclin-300, 50% glycerol.

[**STORAGE AND STABILITY**]

Storage: Avoid repeated freeze/thaw cycles.

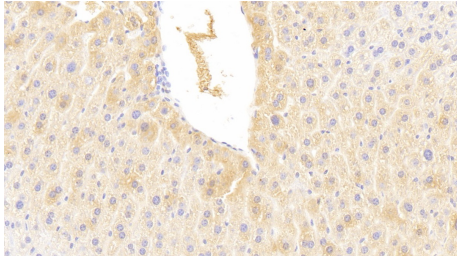
Store at 4°C for frequent use.

Aliquot and store at -20°C for 24 months.

Stability Test: The thermal stability is described by the loss rate. The loss rate was determined by accelerated thermal degradation test, that is, incubate the protein at 37°C for 48h, and no

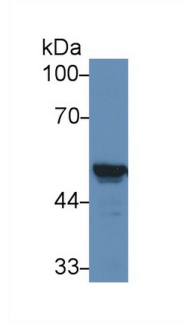
obvious degradation and precipitation were observed. The loss rate is less than 5% within the expiration date under appropriate storage condition.

[IDENTIFICATION]

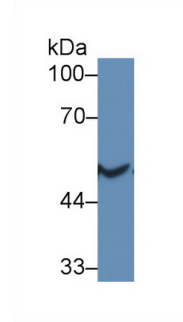


DAB staining on IHC-P; Samples:

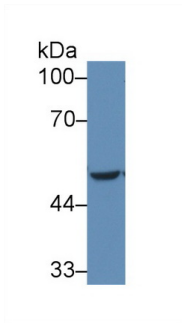
Mouse Liver Tissue; Primary Ab:
20?g/ml Rabbit Anti-Mouse CYP2E1
Antibody Second Ab: 2µg/mL HRP-
Linked Caprine Anti-Rabbit IgG
Polyclonal Antibody (Catalog:
SAA544Rb19)



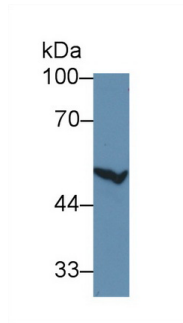
Western Blot; Sample: Mouse Liver
lysate;
Primary Ab: 1µg/ml Rabbit Anti-Mouse
CYP2E1 Antibody
Second Ab: 0.2µg/mL HRP-Linked
Caprine Anti-Rabbit IgG Polyclonal
Antibody
(Catalog: SAA544Rb19)



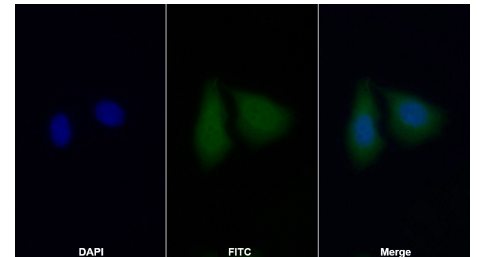
Western Blot; Sample: Rat Liver lysate;
Primary Ab: 1µg/ml Rabbit Anti-Mouse
CYP2E1 Antibody
Second Ab: 0.2µg/mL HRP-Linked
Caprine Anti-Rabbit IgG Polyclonal
Antibody
(Catalog: SAA544Rb19)



Western Blot; Sample: Human HepG2
cell lysate;
Primary Ab: 1µg/ml Rabbit Anti-Mouse
CYP2E1 Antibody
Second Ab: 0.2µg/mL HRP-Linked
Caprine Anti-Rabbit IgG Polyclonal
Antibody
(Catalog: SAA544Rb19)



Western Blot; Sample: Human HeLa cell
lysate;
Primary Ab: 1µg/ml Rabbit Anti-Mouse
CYP2E1 Antibody
Second Ab: 0.2µg/mL HRP-Linked
Caprine Anti-Rabbit IgG Polyclonal
Antibody
(Catalog: SAA544Rb19)



FITC staining on IF;

Samples: Human HepG2 cell;
Primary Ab: 20?g/ml Rabbit Anti-Mouse
CYP2E1 Antibody
Second Ab: 1.5?g/ml FITC-Linked
Caprine Anti-Rabbit IgG Polyclonal
Antibody
(Catalog: SAA544Rb18)

[IMPORTANT NOTE]

The kit is designed for research use only, we will not be responsible for any issue if the kit was used in clinical diagnostic or any other procedures.