

PAB239Mu01

Polyclonal Antibody to Cytokeratin 19 (CK19)

Organism Species: *Mus musculus* (Mouse)

Instruction manual

FOR RESEARCH USE ONLY

NOT FOR USE IN CLINICAL DIAGNOSTIC PROCEDURES

13th Edition (Revised in Aug, 2023)

[PROPERTIES]

Source: Polyclonal antibody preparation

Host: Rabbit

Purification: Antigen-specific affinity chromatography followed by Protein A affinity chromatography

Traits: Liquid

Concentration: 0.45mg/mL

UOM: 100µL

Cross Reactivity: Human;Rat

Applications: WB; IHC

[IMMUNOGEN]

Immunogen: Recombinant CK19 (Met1~Ile403) expressed in *E.coli*

Accession No.: RPB239Mu01

[APPLICATIONS]

Western blotting: 0.005-2µg/mL;

Immunohistochemistry: 5-20µg/mL;

Optimal working dilutions must be determined by end user.

[FORMULATION]

Form & Buffer: Supplied as solution form in 0.01M PBS, pH7.4, containing 0.05% Proclin-300, 50% glycerol.

[STORAGE AND STABILITY]

Storage: Avoid repeated freeze/thaw cycles.

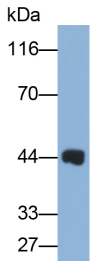
Store at 4°C for frequent use.

Aliquot and store at -20°C for 24 months.

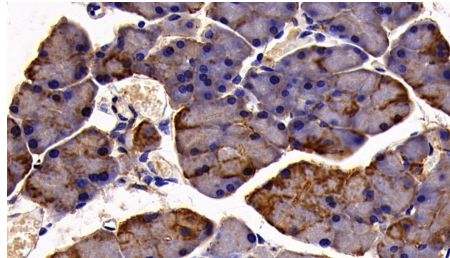
Stability Test: The thermal stability is described by the loss rate. The loss rate was determined by accelerated thermal degradation test, that is, incubate the protein at 37°C for 48h, and no obvious degradation and precipitation were observed. The loss rate is less than 5% within the

expiration date under appropriate storage condition.

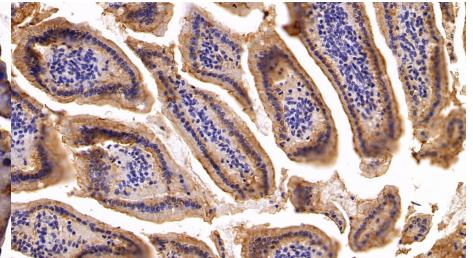
[IDENTIFICATION]



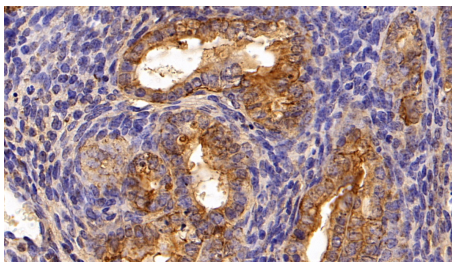
Western Blot; Sample: Mouse Placenta lysate Primary Ab: 0.005µg/ml Rabbit Anti-Mouse CK19 Antibody Second Ab: 0.2µg/ml HRP-Linked Caprine Anti-Rabbit IgG Polyclonal Antibody (Catalog: SAA544Rb19)



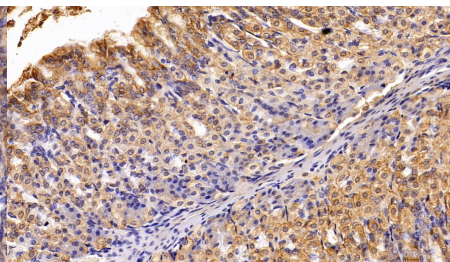
DAB staining on IHC-P; Sample: Mouse Pancreas Tissue; Primary Ab: 20ug/ml Rabbit Anti-Mouse CK19 Antibody Second Ab: 2µg/mL HRP-Linked Caprine Anti-Rabbit IgG Polyclonal Antibody (Catalog: SAA544Rb19)



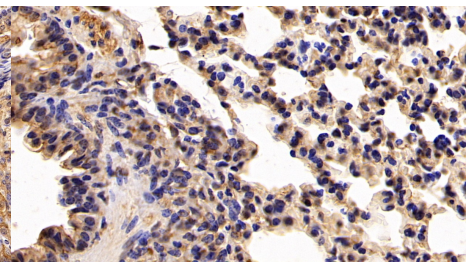
DAB staining on IHC-P; Sample: Mouse Small intestine Tissue; Primary Ab: 20ug/ml Rabbit Anti-Mouse CK19 Antibody Second Ab: 2µg/mL HRP-Linked Caprine Anti-Rabbit IgG Polyclonal Antibody (Catalog: SAA544Rb19)



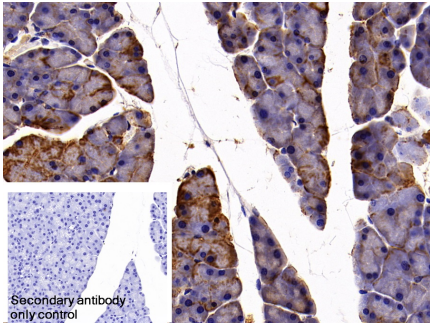
DAB staining on IHC-P; Sample: Mouse Uterus Tissue; Primary Ab: 20ug/ml Rabbit Anti-Mouse CK19 Antibody Second Ab: 2µg/mL HRP-Linked Caprine Anti-Rabbit IgG Polyclonal Antibody (Catalog: SAA544Rb19)



DAB staining on IHC-P; Sample: Mouse Stomach Tissue; Primary Ab: 20ug/ml Rabbit Anti-Mouse CK19 Antibody Second Ab: 2µg/mL HRP-Linked Caprine Anti-Rabbit IgG Polyclonal Antibody (Catalog: SAA544Rb19)



DAB staining on IHC-P; Sample: Mouse Lung Tissue; Primary Ab: 20ug/ml Rabbit Anti-Mouse CK19 Antibody Second Ab: 2µg/mL HRP-Linked Caprine Anti-Rabbit IgG Polyclonal Antibody (Catalog: SAA544Rb19)



DAB staining on IHC-P;

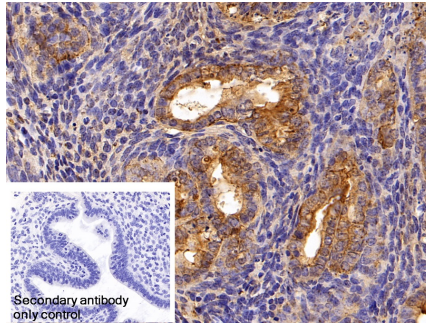
Sample: Rat Skeletal muscle Tissue

Primary Ab: 20µg/ml Rabbit Anti-Rat H-FABP Antibody

Control: Used PBS instead of primary antibody

Second Ab: 2µg/ml HRP-Linked Caprine Anti-Rabbit IgG Polyclonal Antibody

(Catalog: SAA544Rb19)



DAB staining on IHC-P;

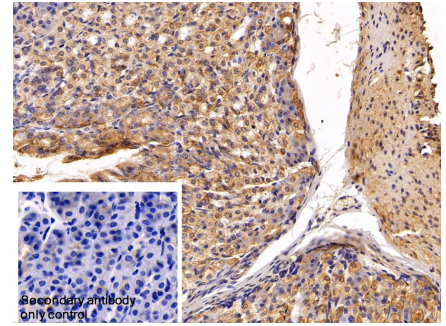
Sample: Mouse Uterus Tissue

Primary Ab: 20µg/ml Rabbit Anti-Mouse CK19 Antibody

Control: Used PBS instead of primary antibody

Second Ab: 2µg/ml HRP-Linked Caprine Anti-Rabbit IgG Polyclonal Antibody

(Catalog: SAA544Rb19)



DAB staining on IHC-P;

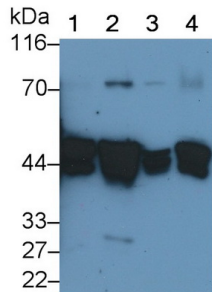
Sample: Mouse Stomach Tissue

Primary Ab: 20µg/ml Rabbit Anti-Mouse CK19 Antibody

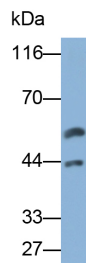
Control: Used PBS instead of primary antibody

Second Ab: 2µg/ml HRP-Linked Caprine Anti-Rabbit IgG Polyclonal Antibody

(Catalog: SAA544Rb19)



Western Blot; Sample: Lane1: Mouse Thymus lysate; Lane2: A431 cell lysate; Lane3: MCF7 cell lysate; Lane4: HepG2 cell lysate
 Primary Ab: 0.1µg/ml Rabbit Anti-Mouse CK19 Antibody
 Second Ab: 0.2µg/mL HRP-Linked Caprine Anti-Rabbit IgG Polyclonal Antibody
 (Catalog: SAA544Rb19)



Western Blot; Sample: HaCaT cell lysate
 Primary Ab: 0.005µg/ml Rabbit Anti-Mouse CK19 Antibody
 Second Ab: 0.2µg/ml HRP-Linked Caprine Anti-Rabbit IgG Polyclonal Antibody
 (Catalog: SAA544Rb19)

[IMPORTANT NOTE]

The kit is designed for research use only, we will not be responsible for any issue if the kit was used in clinical diagnostic or any other procedures.