

PAA302Hu01

Polyclonal Antibody to Galectin 2 (GAL2)

Organism Species: *Homo sapiens (Human)*

Instruction manual

FOR RESEARCH USE ONLY

NOT FOR USE IN CLINICAL DIAGNOSTIC PROCEDURES

13th Edition (Revised in Aug, 2023)

[PROPERTIES]

Source: Polyclonal antibody preparation

Host: Rabbit

Purification: Antigen-specific affinity chromatography followed by Protein A affinity chromatography

Traits: Liquid

Concentration: 0.5mg/mL

UOM: 100µL

Cross Reactivity: Mouse;Rat;Porcine

Applications: WB; IHC

[IMMUNOGEN]

Immunogen: Recombinant GAL2 (Met1~Glu132 (Accession # P05162)) expressed in *E.coli*

Accession No.: RPA302Hu01

[APPLICATIONS]

Western blotting: 0.01-2µg/mL;

Immunohistochemistry: 5-20µg/mL;

Optimal working dilutions must be determined by end user.

[FORMULATION]

Form & Buffer: Supplied as solution form in PBS, pH7.4, containing 0.02% NaN₃, 50% glycerol.

[STORAGE AND STABILITY]

Storage: Avoid repeated freeze/thaw cycles.

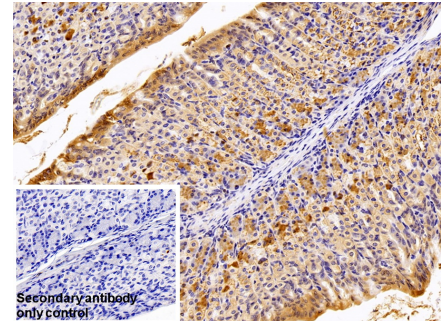
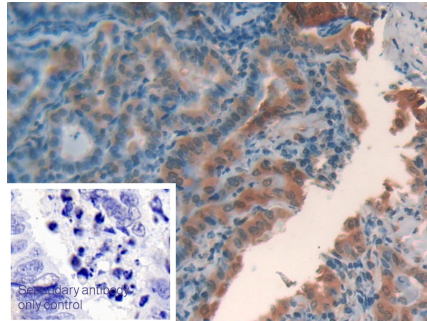
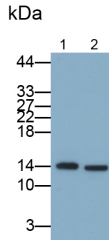
Store at 4°C for frequent use.

Aliquot and store at -20°C for 24 months.

Stability Test: The thermal stability is described by the loss rate. The loss rate was determined by accelerated thermal degradation test, that is, incubate the protein at 37°C for 48h, and no obvious degradation and precipitation were observed. The loss rate is less than 5% within the

expiration date under appropriate storage condition.

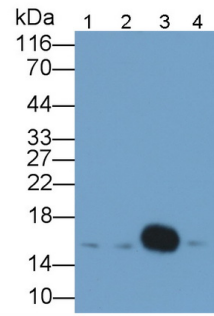
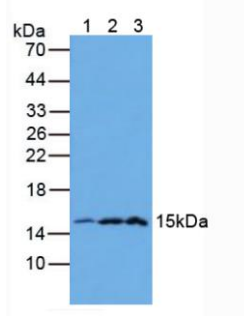
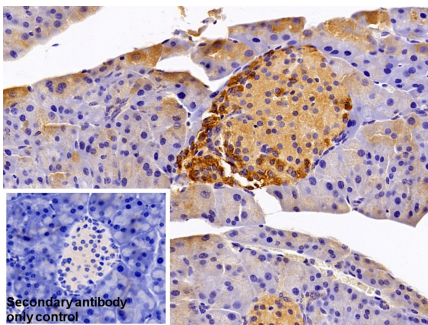
[IDENTIFICATION]



Western Blot; Samples: Lane1: Rat Small intestine lysate; Lane2: HGC27 cell lysate; Primary Ab: 0.5µg/ml Rabbit Anti-Human GAL2 Antibody Second Ab: 0.2µg/ml HRP-Linked Caprine Anti-Rabbit IgG Polyclonal Antibody (Catalog: SAA544Rb19)

DAB staining on IHC-P; Sample: Human Thyroid cancer Tissue; Primary Ab: 20µg/ml Rabbit Anti-Human GAL2 Antibody Second Ab: 2µg/mL HRP-Linked Caprine Anti-Rabbit IgG Polyclonal Antibody (Catalog: SAA544Rb19) Secondary antibody only control: Used PBS instead of primary antibody, Second Ab: 2µg/mL HRP

DAB staining on IHC-P; Sample: Mouse Stomach Tissue Primary Ab: 10µg/ml Rabbit Anti-Human GAL2 Antibody Control: Used PBS instead of primary antibody Second Ab: 2µg/ml HRP-Linked Caprine Anti-Rabbit IgG Polyclonal Antibody (Catalog: SAA544Rb19)



DAB staining on IHC-P; Sample: Mouse Pancreas Tissue Primary Ab: 10µg/ml Rabbit Anti-Human GAL2 Antibody Control: Used PBS instead of primary antibody Second Ab: 2µg/ml HRP-Linked Caprine Anti-Rabbit IgG Polyclonal Antibody

Figure. Western Blot; Sample: Lane1: Mouse Pancreas Tissue; Lane2: Mouse Intestine Tissue; Lane3: Mouse Stomach Tissue.

Western Blot; Sample: Lane1: Porcine Mouse Stomach lysate; Lane2: Porcine Colon lysate; Lane3: Rat Stomach lysate; Lane4: Mouse Stomach lysate Primary Ab: 0.1µg/ml Rabbit Anti-Human GAL2 Antibody Second Ab: 0.2µg/mL HRP-Linked Caprine Anti-Rabbit IgG Polyclonal Antibody

(Catalog: SAA544Rb19)

(Catalog: SAA544Rb19) Selected

[IMPORTANT NOTE]

The kit is designed for research use only, we will not be responsible for any issue if the kit was used in clinical diagnostic or any other procedures.