

PAA671Ra01

Polyclonal Antibody to Glutathione S Transferase Alpha 3 (GSTa3)

Organism Species: *Rattus norvegicus* (Rat)

Instruction manual

FOR RESEARCH USE ONLY

NOT FOR USE IN CLINICAL DIAGNOSTIC PROCEDURES

13th Edition (Revised in Aug, 2023)

[PROPERTIES]

Source: Polyclonal antibody preparation

Host: Rabbit

Purification: Antigen-specific affinity chromatography followed by Protein A affinity chromatography

Traits: Liquid

Concentration: 0.5mg/mL

UOM: 100µL

Cross Reactivity: Porcine

Applications: WB; IHC

[IMMUNOGEN]

Immunogen: Recombinant GSTa3 (Met1~Ser221) expressed in *E.coli*

Accession No.: RPA671Ra01

[APPLICATIONS]

Western blotting: 0.01-2µg/mL;

Immunohistochemistry: 5-20µg/mL;

Optimal working dilutions must be determined by end user.

[FORMULATION]

Form & Buffer: Supplied as solution form in 0.01M PBS, pH7.4, containing 0.05% Proclin-300, 50% glycerol.

[STORAGE AND STABILITY]

Storage: Avoid repeated freeze/thaw cycles.

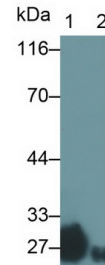
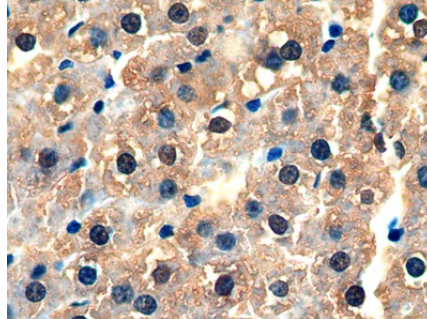
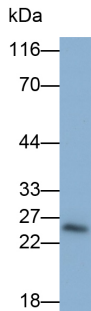
Store at 4°C for frequent use.

Aliquot and store at -20°C for 24 months.

Stability Test: The thermal stability is described by the loss rate. The loss rate was determined by accelerated thermal degradation test, that is, incubate the protein at 37°C for 48h, and no obvious degradation and precipitation were observed. The loss rate is less than 5% within the

expiration date under appropriate storage condition.

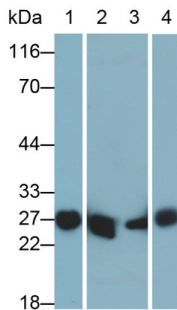
[IDENTIFICATION]



Western Blot; Sample: Porcine Liver lysate
 Primary Ab: 0.05µg/ml Rabbit Anti-Rat GSTa3 Antibody
 Second Ab: 0.2µg/ml HRP-Linked Caprine Anti-Rabbit IgG Polyclonal Antibody
 (Catalog: SAA544Rb19)

DAB staining on IHC-P; Samples: Rat Liver Tissue;
 Primary Ab: 10µg/ml Rabbit Anti-Rat GSTa3 Antibody
 Second Ab: 2µg/mL HRP-Linked Caprine Anti-Rabbit IgG Polyclonal Antibody
 (Catalog: SAA544Rb19)

Western Blot; Sample: Lane1: Rat Liver lysate;
 Lane2: Rat Kidney lysate
 Primary Ab: 0.02µg/ml Rabbit Anti-Rat GSTa3 Antibody
 Second Ab: 0.2µg/mL HRP-Linked Caprine Anti-Rabbit IgG Polyclonal Antibody
 (Catalog: SAA544Rb19)



Western Blot; Sample: Lane1: Rat Liver lysate;
 Lane2: Rat Kidney lysate;
 Lane3: Rat Cerebrum lysate;
 Lane4: Rat Testis lysate
 Primary Ab: 0.02µg/ml Rabbit Anti-Rat GSTa3 Antibody
 Second Ab: 0.2µg/mL HRP-Linked Caprine Anti-Rabbit IgG Polyclonal Antibody
 (Catalog: SAA544Rb19)

[IMPORTANT NOTE]

The kit is designed for research use only, we will not be responsible for any issue if the kit was used in clinical diagnostic or any other procedures.