

PAG475Hu02

Polyclonal Antibody to Glycine Dehydrogenase (GLDC)

Organism Species: *Homo sapiens (Human)*

Instruction manual

FOR RESEARCH USE ONLY

NOT FOR USE IN CLINICAL DIAGNOSTIC PROCEDURES

13th Edition (Revised in Aug, 2023)

[PROPERTIES]

Source: Polyclonal antibody preparation

Host: Rabbit

Purification: Antigen-specific affinity chromatography followed by Protein A affinity chromatography

Traits: Liquid

Concentration: 0.37mg/mL

UOM: 10 μ L

Cross Reactivity: Mouse;Porcine

Applications: WB

[IMMUNOGEN]

Immunogen: Recombinant GLDC (Ala627~Ala833) expressed in *E.coli*

Accession No.: RPG475Hu02

[APPLICATIONS]

Western blotting: 0.01-2 μ g/mL;

Optimal working dilutions must be determined by end user.

[FORMULATION]

Form & Buffer: Supplied as solution form in PBS, pH7.4, containing 0.02% NaN₃, 50% glycerol.

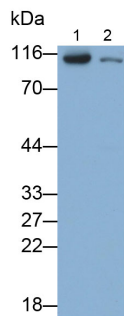
[STORAGE AND STABILITY]

Storage: Avoid repeated freeze/thaw cycles.

Store at 4°C for frequent use.

Aliquot and store at -20°C for 24 months.

Stability Test: The thermal stability is described by the loss rate. The loss rate was determined by accelerated thermal degradation test, that is, incubate the protein at 37°C for 48h, and no obvious degradation and precipitation were observed. The loss rate is less than 5% within the expiration date under appropriate storage condition.

[IDENTIFICATION]

Western Blot; Samples: Lane1: Porcine Liver lysate; Lane2: Mouse Liver lysate;

Primary Ab: 0.1 μ g/ml Rabbit Anti-Human GLDC Antibody

Second Ab: 0.2 μ g/ml HRP-Linked Caprine Anti-Rabbit IgG Polyclonal Antibody

(Catalog: SAA544Rb19)

[IMPORTANT NOTE]

The kit is designed for research use only, we will not be responsible for any issue if the kit was used in clinical diagnostic or any other procedures.