

**PAA234Hu01**

**Polyclonal Antibody to Immunoglobulin G4 (IgG4)**

**Organism Species: *Homo sapiens (Human)***

***Instruction manual***

FOR RESEARCH USE ONLY

NOT FOR USE IN CLINICAL DIAGNOSTIC PROCEDURES

---

13th Edition (Revised in Aug, 2023)

**[ PROPERTIES ]**

**Source:** Polyclonal antibody preparation

**Host:** Rabbit

**Purification:** Antigen-specific affinity chromatography followed by Protein A affinity chromatography

**Traits:** Liquid

**Concentration:** 0.5mg/mL

**UOM:** 1mL

**Cross Reactivity:** Mouse;Porcine

**Applications:** WB; IHC

**[ IMMUNOGEN ]**

**Immunogen:** Native IgG4

**Accession No.:** NPA234Hu01

**[ APPLICATIONS ]**

Western blotting: 0.005-2µg/mL;

Immunohistochemistry: 5-20µg/mL;

Optimal working dilutions must be determined by end user.

**[ FORMULATION ]**

**Form & Buffer:** Supplied as solution form in 0.01M PBS, pH7.4, containing 0.05% Proclin-300, 50% glycerol.

**[ STORAGE AND STABILITY ]**

**Storage:** Avoid repeated freeze/thaw cycles.

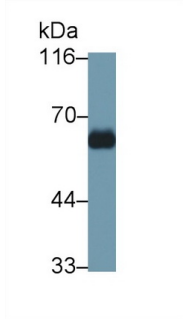
Store at 4°C for frequent use.

Aliquot and store at -20°C for 24 months.

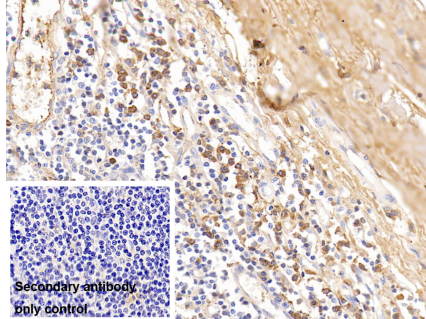
**Stability Test:** The thermal stability is described by the loss rate. The loss rate was determined by accelerated thermal degradation test, that is, incubate the protein at 37°C for 48h, and no obvious degradation and precipitation were observed. The loss rate is less than 5% within the

expiration date under appropriate storage condition.

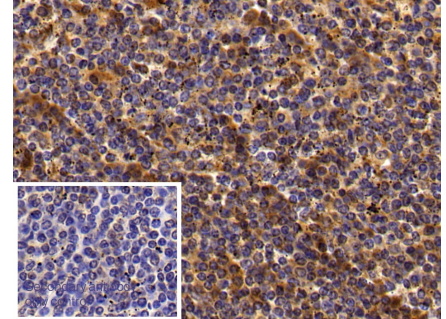
**[ IDENTIFICATION ]**



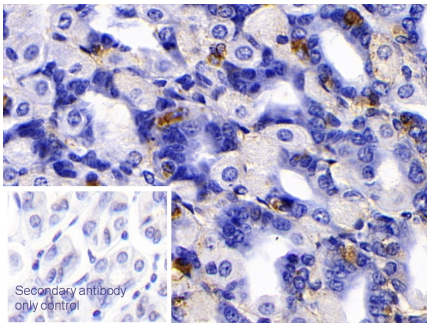
Western Blot; Sample: Human Serum  
 Primary Ab: 0.005µg/ml Rabbit Anti-Human IgG4 Antibody  
 Second Ab: 0.2µg/mL HRP-Linked Caprine Anti-Rabbit IgG Polyclonal Antibody  
 (Catalog: SAA544Rb19)



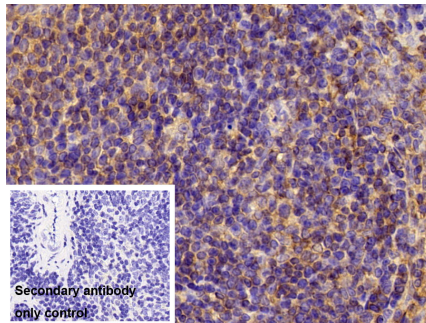
DAB staining on IHC-P; Samples: Human Tonsil Tissue; Primary Ab: 10ug/ml Rabbit Anti-Human IgG4 Antibody Second Ab: 2µg/mL HRP-Linked Caprine Anti-Rabbit IgG Polyclonal Antibody (Catalog: SAA544Rb19)



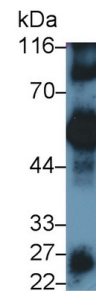
DAB staining on IHC-P; Sample: Human Spleen Tissue Primary Ab: 20µg/ml Rabbit Anti-Human IgG4 Antibody Control: Used PBS instead of primary antibody Second Ab: 2?g/ml HRP-Linked Caprine Anti-Rabbit IgG Polyclonal Antibody (Catalog: SAA544Rb19)



DAB staining on IHC-P; Sample: Mouse Stomach Tissue Primary Ab: 10µg/ml Rabbit Anti-Human IgG4 Antibody Control: Used PBS instead of primary antibody Second Ab: 2?g/ml HRP-Linked Caprine Anti-Rabbit IgG Polyclonal Antibody



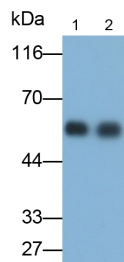
DAB staining on IHC-P; Sample: Mouse Spleen Tissue Primary Ab: 10µg/ml Rabbit Anti-Human IgG4 Antibody Control: Used PBS instead of primary antibody Second Ab: 2?g/ml HRP-Linked Caprine Anti-Rabbit IgG Polyclonal Antibody



Western Blot; Sample: Porcine Serum Primary Ab: 0.05µg/ml Rabbit Anti-Human IgG4 Antibody Second Ab: 0.2µg/mL HRP-Linked Caprine Anti-Rabbit IgG Polyclonal Antibody (Catalog: SAA544Rb19) Selected

(Catalog: SAA544Rb19)

(Catalog: SAA544Rb19)



Western Blot; Samples: Lane1: Human

Serum; Lane2: Human Plasma;

Primary Ab: 0.01 $\mu$ g/ml Rabbit Anti-  
Human IgG4 Antibody

Second Ab: 0.2 $\mu$ g/ml HRP-Linked  
Caprine Anti-Rabbit IgG Polyclonal  
Antibody

(Catalog: SAA544Rb19)

### [ **IMPORTANT NOTE** ]

The kit is designed for research use only, we will not be responsible for any issue if the kit was used in clinical diagnostic or any other procedures.