

PAC615Mu01

**Polyclonal Antibody to Induced Myeloid Leukemia Cell Differentiation Protein Mcl-1
(MCL1)**

Organism Species: *Mus musculus* (Mouse)

Instruction manual

FOR RESEARCH USE ONLY
NOT FOR USE IN CLINICAL DIAGNOSTIC PROCEDURES

13th Edition (Revised in Aug, 2023)

[PROPERTIES]

Source: Polyclonal antibody preparation

Host: Rabbit

Purification: Antigen-specific affinity chromatography followed by Protein A affinity chromatography

Traits: Liquid

Concentration: 0.5mg/mL

UOM: 100µL

Cross Reactivity: Human

Applications: WB; IHC; ICC/IF; FCM

[IMMUNOGEN]

Immunogen: Recombinant MCL1 (Glu66~Gly307) expressed in *E.coli*

Accession No.: RPC615Mu01

[APPLICATIONS]

Western blotting: 0.01-2?g/mL;

Immunohistochemistry: 5-20?g/mL;

Immunofluorescence: 5-40?g/mL;

Flow cytometry: 20?g/mL;

Optimal working dilutions must be determined by end user.

[FORMULATION]

Form & Buffer: Supplied as solution form in PBS, pH7.4, containing 0.02% NaN₃, 50% glycerol.

[STORAGE AND STABILITY]

Storage: Avoid repeated freeze/thaw cycles.

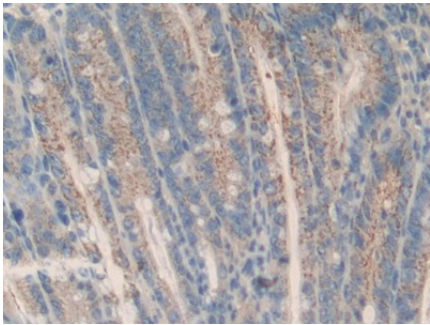
Store at 4°C for frequent use.

Aliquot and store at -20°C for 24 months.

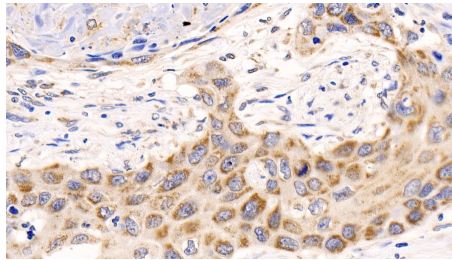
Stability Test: The thermal stability is described by the loss rate. The loss rate was determined

by accelerated thermal degradation test, that is, incubate the protein at 37°C for 48h, and no obvious degradation and precipitation were observed. The loss rate is less than 5% within the expiration date under appropriate storage condition.

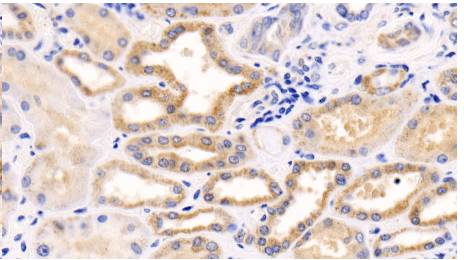
[IDENTIFICATION]



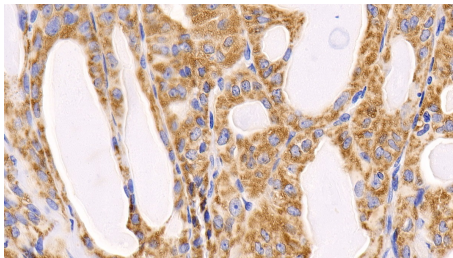
DAB staining on IHC-P; Samples: Mouse Intestine Tissue; Primary Ab: 10µg/ml Rabbit Anti-Mouse MCL1 Antibody Second Ab: 2µg/mL HRP-Linked Caprine Anti-Rabbit IgG Polyclonal Antibody (Catalog: SAA544Rb19)



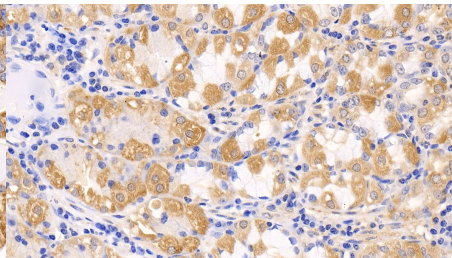
DAB staining on IHC-P; Samples: Human Lung cancer Tissue; Primary Ab: 20ug/ml Rabbit Anti-Mouse MCL1 Antibody Second Ab: 2µg/mL HRP-Linked Caprine Anti-Rabbit IgG Polyclonal Antibody (Catalog: SAA544Rb19)



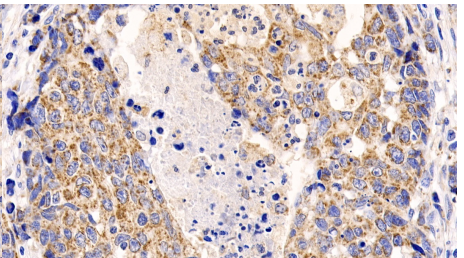
DAB staining on IHC-P; Samples: Human Kidney Tissue; Primary Ab: 20ug/ml Rabbit Anti-Mouse MCL1 Antibody Second Ab: 2µg/mL HRP-Linked Caprine Anti-Rabbit IgG Polyclonal Antibody (Catalog: SAA544Rb19)



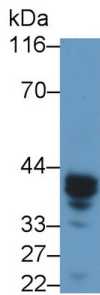
DAB staining on IHC-P; Samples: Human Thyroid Tissue; Primary Ab: 20ug/ml Rabbit Anti-Mouse MCL1 Antibody Second Ab: 2µg/mL HRP-Linked Caprine Anti-Rabbit IgG Polyclonal Antibody (Catalog: SAA544Rb19)



DAB staining on IHC-P; Samples: Human Stomach Tissue; Primary Ab: 20ug/ml Rabbit Anti-Mouse MCL1 Antibody Second Ab: 2µg/mL HRP-Linked Caprine Anti-Rabbit IgG Polyclonal Antibody (Catalog: SAA544Rb19)



DAB staining on IHC-P; Samples: Human Lymphoma Tissue; Primary Ab: 20ug/ml Rabbit Anti-Mouse MCL1 Antibody Second Ab: 2µg/mL HRP-Linked Caprine Anti-Rabbit IgG Polyclonal Antibody (Catalog: SAA544Rb19)



Western Blot; Sample: Mouse Spleen lysate

Primary Ab: 0.3?g/ml Rabbit Anti-Mouse MCL1 Antibody
 Second Ab: 0.2µg/mL HRP-Linked Caprine Anti-Rabbit IgG Polyclonal Antibody

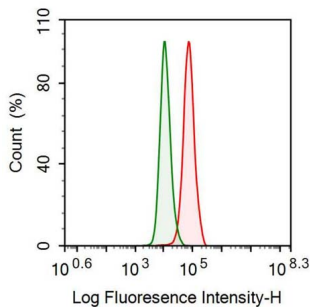
(Catalog: SAA544Rb19)



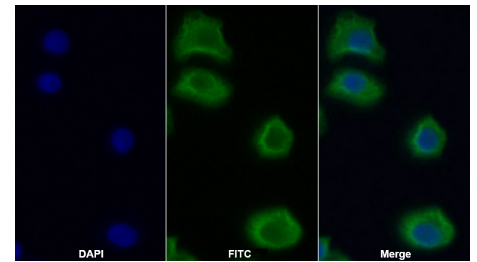
Western Blot; Sample: Mouse Small intestine lysate

Primary Ab: 0.3?g/ml Rabbit Anti-Mouse MCL1 Antibody
 Second Ab: 0.2µg/mL HRP-Linked Caprine Anti-Rabbit IgG Polyclonal Antibody

(Catalog: SAA544Rb19)



Mouse Hepa1-6 cell was fixed with 2% paraformaldehyde (10 min), permeabilised with 0.1% BSA-Triton X-100, then stained with 20µg/ml rabbit Anti-Mouse MCL1 Polyclonal Antibody (Catalog PAC615Mu01, red histogram) or Isotype control antibody (Catalog IS067-Rb01, green histogram), followed by 1µg/ml FITC-conjugated Anti-rabbit IgG Secondary Antibody (Catalog SAA544Rb18).



FITC staining on IF;

Samples: Human HeLa cell;
 Primary Ab: 40?g/ml Rabbit Anti-Mouse MCL1 Antibody
 Second Ab: 1.5?g/ml FITC-Linked Caprine Anti-Rabbit IgG Polyclonal Antibody
 (Catalog: SAA544Rb18)

[IMPORTANT NOTE]

The kit is designed for research use only, we will not be responsible for any issue if the kit was used in clinical diagnostic or any other procedures.