

PAL617Hu01

Polyclonal Antibody

To Insulin Like Growth Factor 2 mRNA Binding Protein 3 (IGF2BP3)

Organism Species: Homo sapiens (Human)

Instruction manual

FOR IN VITRO USE AND RESEARCH USE ONLY

NOT FOR USE IN CLINICAL DIAGNOSTIC PROCEDURES

9th Edition (Revised in Jul, 2013)

[PRODUCT INFORMATION]

Immunogen: IGF2BP3, Human

Clonality: Polyclonal

Host: Rabbit

Immunoglobulin Type: IgG

Purification: Affinity Chromatography.

Applications: WB, ICC, IHC-P, IHC-F, ELISA

Concentration: 200µg/mL

UOM: 100µg

[IMMUNOGEN INFORMATION]

Immunogen: Recombinant IGF2BP3 (Asn2~Ile343) expressed in *E.coli*.

Accession No.: RPL617Hu01

Sequence: The target protein is fused with two N-terminal Tags, His-tag and T7-tag and its sequence is listed below.

MGSSHHHHHH SSGLVPRGSH MASMTGGQQM GRGSEF- NKLYIGNLS ENAAPSDLES
IFKDAKIPVS GPFLVKTYA FVDCPDESWA LKAIEALSGK IELHGKPIEV EHSVPRQRRI
RKLQIRNIPP HLQWEVLDL LVQYGVVESC EQVNTDSETA VVNVYSSKD QARQALDKLN
GFQLENFTLK VAYIPDEMAA QQNPLQQPRG RRGLGQRGSS RQGSPGSVSK
QKPCDLPLRL LVPTQFVGAI IGKEGATIRN ITKQTQSKID VHRKENAGAA EKSITILSTP
EGTSAACKSI LEIMHKEAQD IKFTEEIPLK ILAHNNFVGR LIGKEGRNLK KIEQDQDTKI
TISPLQELTL YNPRTITVK GNVETCAKAE EEI

[ANTIBODY SPECIFICITY]

The antibody is a rabbit polyclonal antibody raised against IGF2BP3. It has been selected for its ability to recognize IGF2BP3 in immunohistochemical staining and western blotting.

[APPLICATIONS]

Western blotting: 1:50-400

Immunocytochemistry in formalin fixed cells: 1:50-500

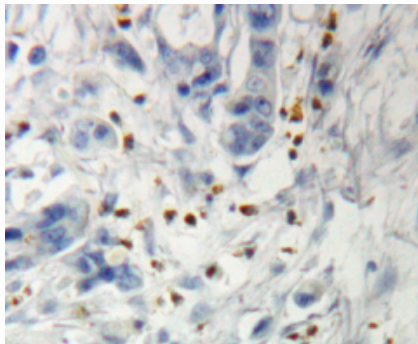
Immunohistochemistry in formalin fixed frozen section: 1:50-500

Immunohistochemistry in paraffin section: 1:10-100

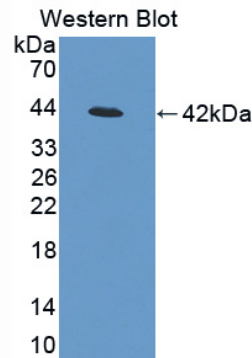
Enzyme-linked Immunosorbent Assay: 1:100-200

Optimal working dilutions must be determined by end user.

[IMAGES]



Used in DAB staining on formalin fixed
paraffin-embedded pancreas tissue



Used in Western Blot, Sample:
Recombinant IGF2BP3, Human

[CONTENTS]

Form & Buffer: Supplied as solution form in PBS, pH7.4, containing 0.02% NaN_3 , 50% glycerol.

[QUALITY CONTROL]

Content: The quality control contains recombinant IGF2BP3 (Asn2~Ile343) disposed in loading buffer.

Usage: 10uL per well when 3,3'-Diaminobenzidine(DAB) as the substrate.
5uL per well when used in enhanced chemiluminescent (ECL).

Note: The quality control is specifically manufactured as the positive control. Not used for other purposes.

Loading Buffer: 100mM Tris(pH8.8), 2% SDS, 200mM NaCl, 50% glycerol, BPB 0.01%, NaN_3 0.02%.

[STORAGE]

Store at 4°C for frequent use. Stored at -20°C to -80°C in a manual defrost freezer for one year without detectable loss of activity. Avoid repeated freeze-thaw cycles.