

PAA895Mu01

Polyclonal Antibody to Insulin Receptor (INSR)

Organism Species: *Mus musculus* (Mouse)

Instruction manual

FOR RESEARCH USE ONLY

NOT FOR USE IN CLINICAL DIAGNOSTIC PROCEDURES

13th Edition (Revised in Aug, 2023)

[PROPERTIES]

Source: Polyclonal antibody preparation

Host: Rabbit

Purification: Antigen-specific affinity chromatography followed by Protein A affinity chromatography

Traits: Liquid

Concentration: 0.5mg/mL

UOM: 100µL

Cross Reactivity: Human;Rat

Applications: WB; IHC; ICC; IP.

[IMMUNOGEN]

Immunogen: Recombinant INSR (Leu1101~Ser1372) expressed in *E.coli*

Accession No.: RPA895Mu01

[APPLICATIONS]

Western blotting: 0.01-2µg/mL;

Immunohistochemistry: 5-20µg/mL;

Immunocytochemistry: 5-20µg/mL;

Optimal working dilutions must be determined by end user.

[FORMULATION]

Form & Buffer: Supplied as solution form in PBS, pH7.4, containing 0.02% NaN₃, 50% glycerol.

[STORAGE AND STABILITY]

Storage: Avoid repeated freeze/thaw cycles.

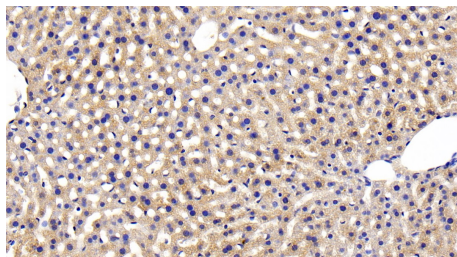
Store at 4°C for frequent use.

Aliquot and store at -20°C for 24 months.

Stability Test: The thermal stability is described by the loss rate. The loss rate was determined by accelerated thermal degradation test, that is, incubate the protein at 37°C for 48h, and no

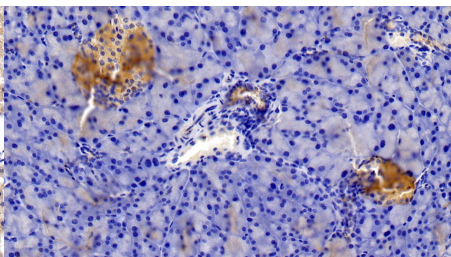
obvious degradation and precipitation were observed. The loss rate is less than 5% within the expiration date under appropriate storage condition.

[IDENTIFICATION]



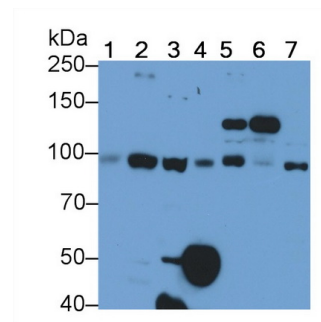
DAB staining on IHC-P; Sample: Mouse

Liver Tissue; Primary Ab: 20?g/ml
Rabbit Anti-Mouse INSR Antibody
Second Ab: 2µg/mL HRP-Linked
Caprine Anti-Rabbit IgG Polyclonal
Antibody (Catalog: SAA544Rb19)



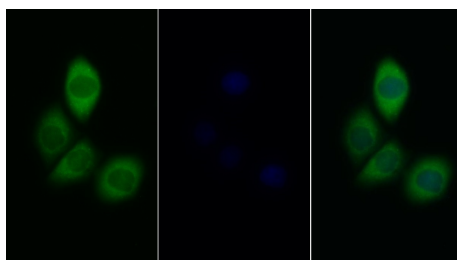
DAB staining on IHC-P;

Sample: Mouse Pancreas Tissue;
Primary Ab: 20?g/ml Rabbit Anti-Mouse
INSR Antibody
Second Ab: 2µg/mL HRP-Linked
Caprine Anti-Rabbit IgG Polyclonal
Antibody
(Catalog: SAA544Rb19)



Western Blot; Sample: Lane1: Mouse
Pancreas lysate; Lane2: Mouse Liver
lysate; Lane3: Mouse Skeletal muscle
lysate; Lane4: Rat Pancreas lysate;
Lane5: MCF7 cell lysate? Lane6:
HCT116 cell lysate? Lane7: HepG2 cell
lysate

Primary Ab: 0.8µg/ml Rabbit Anti-
Mouse INSR Antibody
Second Ab: 0.2µg/mL HRP-Linked
Caprine Anti-Rabbit IgG Polyclonal
Antibody
(Catalog: SAA544Rb19)



FITC staining on IF;

Sample: Human MCF7 cell;

Primary Ab: 20?g/ml Rabbit Anti-Mouse
INSR Antibody
Second Ab: 1.5?g/ml FITC-Linked
Caprine Anti-Rabbit IgG Polyclonal

Antibody

(Catalog: SAA544Rb18)

[IMPORTANT NOTE]

The kit is designed for research use only, we will not be responsible for any issue if the kit was used in clinical diagnostic or any other procedures.