

PAA548Hu02

Polyclonal Antibody to Intercellular Adhesion Molecule 1 (ICAM1)

Organism Species: *Homo sapiens* (Human)

Instruction manual

FOR RESEARCH USE ONLY

NOT FOR USE IN CLINICAL DIAGNOSTIC PROCEDURES

13th Edition (Revised in Aug, 2023)

[PROPERTIES]

Source: Polyclonal antibody preparation

Host: Rabbit

Purification: Antigen-specific affinity chromatography followed by Protein A affinity chromatography

Traits: Liquid

Concentration: 0.5mg/mL

UOM: 100µL

Cross Reactivity: Mouse;Rat

Applications: WB; IHC

[IMMUNOGEN]

Immunogen: Recombinant ICAM1 (Asn26~Glu480) expressed in *E.coli*

Accession No.: RPA548Hu02

[APPLICATIONS]

Western blotting: 0.01-2µg/mL;

Immunohistochemistry: 5-20µg/mL;

Optimal working dilutions must be determined by end user.

[FORMULATION]

Form & Buffer: Supplied as solution form in PBS, pH7.4, containing 0.02% NaN₃, 50% glycerol.

[STORAGE AND STABILITY]

Storage: Avoid repeated freeze/thaw cycles.

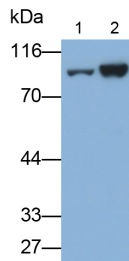
Store at 4°C for frequent use.

Aliquot and store at -20°C for 24 months.

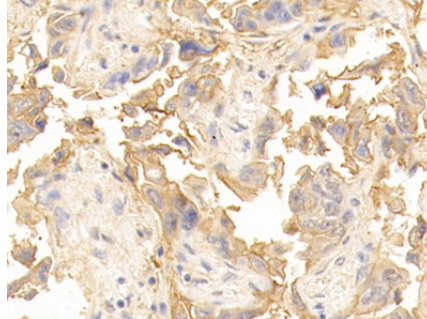
Stability Test: The thermal stability is described by the loss rate. The loss rate was determined by accelerated thermal degradation test, that is, incubate the protein at 37°C for 48h, and no obvious degradation and precipitation were observed. The loss rate is less than 5% within the

expiration date under appropriate storage condition.

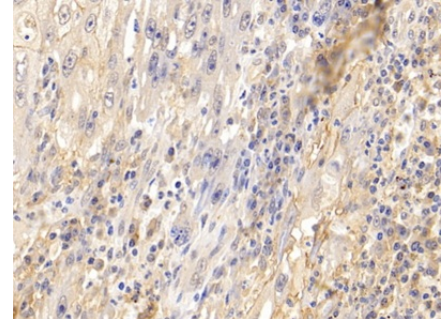
[IDENTIFICATION]



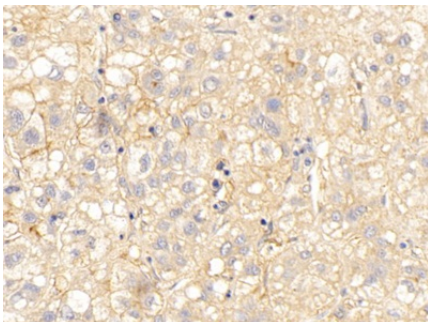
Western Blot; Samples: Lane1: Rat Liver lysate; Lane2: Mouse Liver lysate; Primary Ab: 0.1µg/ml Rabbit Anti-Human ICAM1 Antibody Second Ab: 0.2µg/ml HRP-Linked Caprine Anti-Rabbit IgG Polyclonal Antibody (Catalog: SAA544Rb19)



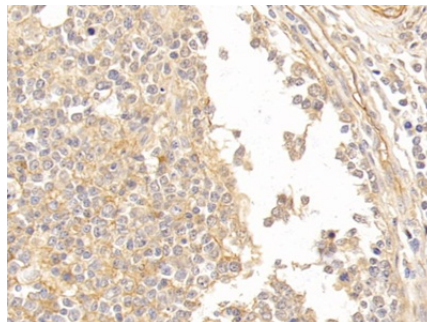
DAB staining on IHC-P; Samples: Human Lung cancer Tissue; Primary Ab: 10ug/ml Rabbit Anti-Human ICAM1 Antibody Second Ab: 2µg/mL HRP-Linked Caprine Anti-Rabbit IgG Polyclonal Antibody (Catalog: SAA544Rb19)



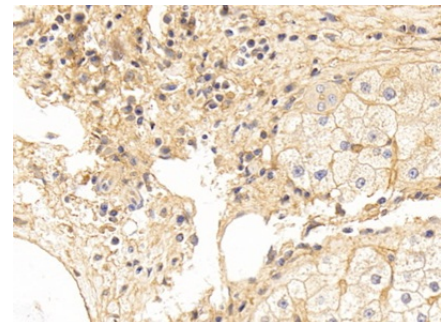
DAB staining on IHC-P; Samples: Human Lymphoma Tissue; Primary Ab: 10ug/ml Rabbit Anti-Human ICAM1 Antibody Second Ab: 2µg/mL HRP-Linked Caprine Anti-Rabbit IgG Polyclonal Antibody (Catalog: SAA544Rb19)



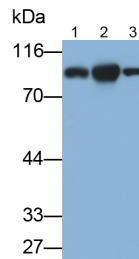
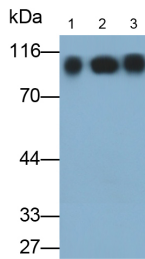
DAB staining on IHC-P; Samples: Human Liver cancer Tissue; Primary Ab: 10ug/ml Rabbit Anti-Human ICAM1 Antibody Second Ab: 2µg/mL HRP-Linked Caprine Anti-Rabbit IgG Polyclonal Antibody (Catalog: SAA544Rb19)



DAB staining on IHC-P; Samples: Human Tonsil Tissue; Primary Ab: 10ug/ml Rabbit Anti-Human ICAM1 Antibody Second Ab: 2µg/mL HRP-Linked Caprine Anti-Rabbit IgG Polyclonal Antibody (Catalog: SAA544Rb19)



DAB staining on IHC-P; Samples: Human Liver Tissue; Primary Ab: 10ug/ml Rabbit Anti-Human ICAM1 Antibody Second Ab: 2µg/mL HRP-Linked Caprine Anti-Rabbit IgG Polyclonal Antibody (Catalog: SAA544Rb19)



Western Blot; Samples: Lane1: Raji cell lysate; Lane2: Ramos cell lysate; Lane3: HUVEC cell lysate; Primary Ab: 0.2µg/ml Rabbit Anti-Human ICAM1 Antibody; Second Ab: 0.2µg/ml HRP-Linked Caprine Anti-Rabbit IgG Polyclonal Antibody (Catalog: SAA544Rb19)	Western Blot; Samples: Lane1: Raji cell lysate; Lane2: Mouse Liver lysate; Lane3: Human Lung lysate; Primary Ab: 0.1µg/ml Rabbit Anti-Human ICAM1 Antibody; Second Ab: 0.2µg/ml HRP-Linked Caprine Anti-Rabbit IgG Polyclonal Antibody (Catalog: SAA544Rb19)
---	--

[IMPORTANT NOTE]

The kit is designed for research use only, we will not be responsible for any issue if the kit was used in clinical diagnostic or any other procedures.