

**PAA563Rb51**

**Polyclonal Antibody to Interleukin 1 Beta (IL1b)**

**Organism Species: *Oryctolagus cuniculus* (Rabbit)**

***Instruction manual***

FOR RESEARCH USE ONLY

NOT FOR USE IN CLINICAL DIAGNOSTIC PROCEDURES

---

13th Edition (Revised in Aug, 2023)

**[ PROPERTIES ]**

**Source:** Polyclonal antibody preparation

**Host:** Guinea pig

**Purification:** Antigen-specific affinity chromatography followed by Protein A affinity chromatography

**Traits:** Liquid

**Concentration:** 0.5mg/mL

**UOM:** 100µL

**Cross Reactivity:** Rat

**Applications:** WB

**[ IMMUNOGEN ]**

**Immunogen:** Recombinant IL1b (Val118~Ser268) expressed in *E.coli*

**Accession No.:** RPA563Rb01

**[ APPLICATIONS ]**

Western blotting: 0.01-4µg/mL;

Optimal working dilutions must be determined by end user.

**[ FORMULATION ]**

**Form & Buffer:** Supplied as solution form in 0.01M PBS, pH7.4, containing 0.05% Proclin-300, 50% glycerol.

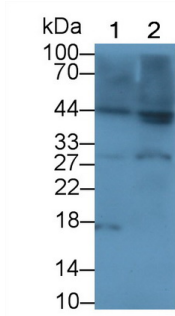
**[ STORAGE AND STABILITY ]**

**Storage:** Avoid repeated freeze/thaw cycles.

Store at 4°C for frequent use.

Aliquot and store at -20°C for 24 months.

**Stability Test:** The thermal stability is described by the loss rate. The loss rate was determined by accelerated thermal degradation test, that is, incubate the protein at 37°C for 48h, and no obvious degradation and precipitation were observed. The loss rate is less than 5% within the expiration date under appropriate storage condition.

**[ IDENTIFICATION ]**

Western Blot; Sample: Lane1: Rabbit  
Thymus lysate; Lane2: Rat Thymus  
lysate

Primary Ab: 4 $\mu$ g/ml Cavia Anti-Rabbit  
IL1b Antibody

Second Ab: 0.2 $\mu$ g/mL HRP-Linked  
Rabbit Anti-Cavia IgG Polyclonal  
Antibody

(Catalog: SAA544Gu09)

**[ IMPORTANT NOTE ]**

The kit is designed for research use only, we will not be responsible for any issue if the kit was used in clinical diagnostic or any other procedures.