

**PAE771Mu01**

**Polyclonal Antibody to Interleukin 11 Receptor Alpha (IL11Ra)**

**Organism Species: *Mus musculus* (Mouse)**

***Instruction manual***

**FOR RESEARCH USE ONLY**

**NOT FOR USE IN CLINICAL DIAGNOSTIC PROCEDURES**

---

13th Edition (Revised in Aug, 2023)

## **[ PROPERTIES ]**

**Source:** Polyclonal antibody preparation

**Host:** Rabbit

**Purification:** Antigen-specific affinity chromatography followed by Protein A affinity chromatography

**Traits:** Liquid

**Concentration:** 0.5mg/mL

**UOM:** 100µL

**Cross Reactivity:** Human;Rat;Porcine

**Applications:** WB; IHC; ICC/IF

## **[ IMMUNOGEN ]**

**Immunogen:** Recombinant IL11Ra (Trp59~Arg217 (Accession # Q64385)) expressed in *E.coli*

**Accession No.:** RPE771Mu01

## **[ APPLICATIONS ]**

Western blotting: 0.01-2µg/mL;

Immunohistochemistry: 5-30µg/mL;

Immunofluorescence:5-20µg/mL;

Optimal working dilutions must be determined by end user.

## **[ FORMULATION ]**

**Form & Buffer:** Supplied as solution form in 0.01M PBS, pH7.4, containing 0.05% Proclin-300, 50% glycerol.

## **[ STORAGE AND STABILITY ]**

**Storage:** Avoid repeated freeze/thaw cycles.

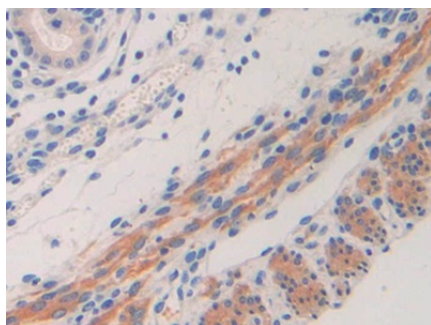
Store at 4°C for frequent use.

Aliquot and store at -20°C for 24 months.

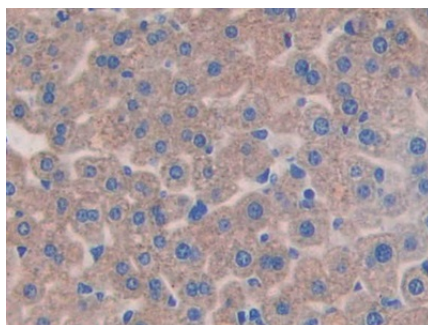
**Stability Test:** The thermal stability is described by the loss rate. The loss rate was determined by accelerated thermal degradation test, that is, incubate the protein at 37°C for 48h, and no

obvious degradation and precipitation were observed. The loss rate is less than 5% within the expiration date under appropriate storage condition.

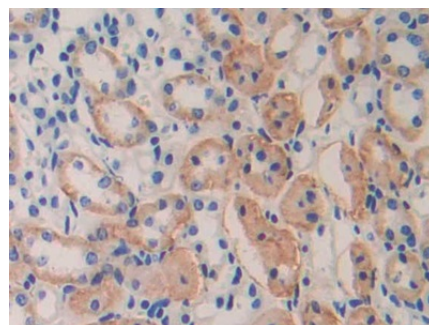
## [ IDENTIFICATION ]



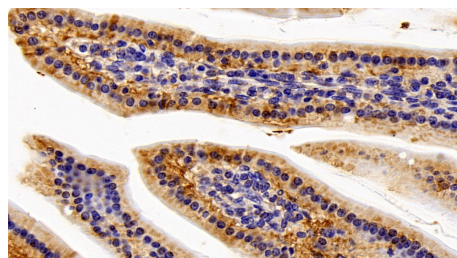
DAB staining on IHC-P; Samples:  
Mouse Uterus Tissue; Primary Ab:  
30µg/ml Rabbit Anti-Mouse IL11Ra  
Antibody Second Ab: 2µg/mL HRP-  
Linked Caprine Anti-Rabbit IgG  
Polyclonal Antibody (Catalog:  
SAA544Rb19)



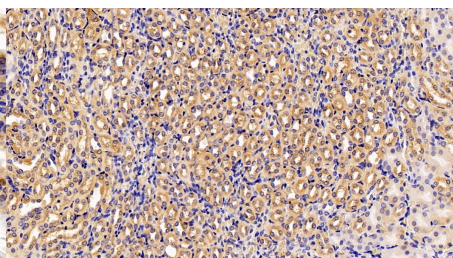
DAB staining on IHC-P;  
Samples: Mouse Liver Tissue;  
Primary Ab: 30µg/ml Rabbit Anti-Mouse  
IL11Ra Antibody  
Second Ab: 2µg/mL HRP-Linked  
Caprine Anti-Rabbit IgG Polyclonal  
Antibody  
(Catalog: SAA544Rb19)



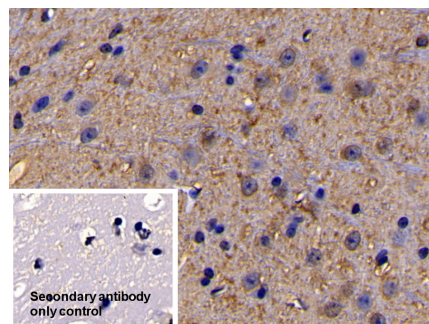
DAB staining on IHC-P;  
Samples: Mouse Kidney Tissue;  
Primary Ab: 30µg/ml Rabbit Anti-Mouse  
IL11Ra Antibody  
Second Ab: 2µg/mL HRP-Linked  
Caprine Anti-Rabbit IgG Polyclonal  
Antibody  
(Catalog: SAA544Rb19)



DAB staining on IHC-P;  
Sample: Mouse Small intestine Tissue;  
Primary Ab: 10ug/ml Rabbit Anti-Mouse  
IL11Ra Antibody  
Second Ab: 2µg/mL HRP-Linked  
Caprine Anti-Rabbit IgG Polyclonal  
Antibody  
(Catalog: SAA544Rb19)

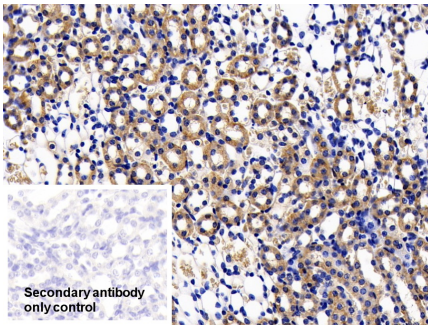


DAB staining on IHC-P;  
Sample: Mouse Kidney Tissue;  
Primary Ab: 10ug/ml Rabbit Anti-Mouse  
IL11Ra Antibody  
Second Ab: 2µg/mL HRP-Linked  
Caprine Anti-Rabbit IgG Polyclonal  
Antibody  
(Catalog: SAA544Rb19)



DAB staining on IHC-P;  
Sample: Mouse Cerebrum Tissue  
Primary Ab: 20µg/ml Rabbit Anti-Mouse  
IL11Ra Antibody  
Control: Used PBS instead of primary  
antibody  
Second Ab: 2µg/ml HRP-Linked  
Caprine Anti-Rabbit IgG Polyclonal  
Antibody

(Catalog: SAA544Rb19)



DAB staining on IHC-P;

Sample: Mouse Kidney Tissue

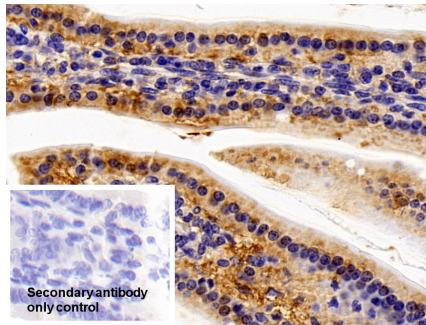
Primary Ab: 20µg/ml Rabbit Anti-Mouse

IL11Ra Antibody

Control: Used PBS instead of primary antibody

Second Ab: 2µg/ml HRP-Linked  
Caprine Anti-Rabbit IgG Polyclonal  
Antibody

(Catalog: SAA544Rb19)



DAB staining on IHC-P;

Sample: Mouse Small intestine Tissue

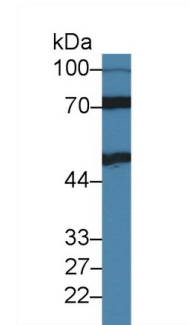
Primary Ab: 10µg/ml Rabbit Anti-Mouse

IL11Ra Antibody

Control: Used PBS instead of primary antibody

Second Ab: 2µg/ml HRP-Linked  
Caprine Anti-Rabbit IgG Polyclonal  
Antibody

(Catalog: SAA544Rb19)



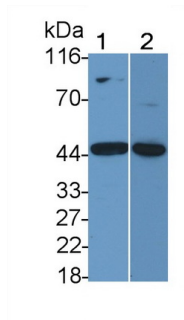
Western Blot; Sample: Rat Kidney  
lysate;

Primary Ab: 1µg/ml Rabbit Anti-Mouse

IL11Ra Antibody

Second Ab: 0.2µg/mL HRP-Linked  
Caprine Anti-Rabbit IgG Polyclonal  
Antibody

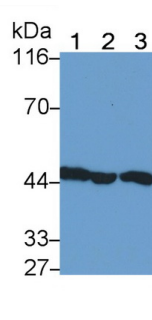
(Catalog: SAA544Rb19)



Western Blot; Sample: Lane1: Mouse  
Skeletal muscle lysate; Lane2: 293T  
cell lysate

Primary Ab: 0.1µg/ml Rabbit Anti-  
Mouse IL11Ra Antibody  
Second Ab: 0.2µg/mL HRP-Linked  
Caprine Anti-Rabbit IgG Polyclonal  
Antibody

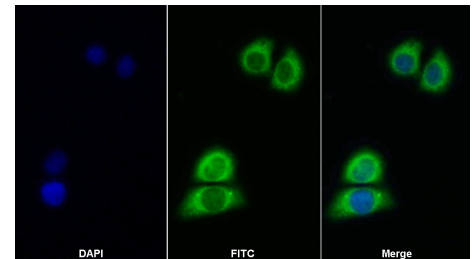
(Catalog: SAA544Rb19)



Western Blot; Sample: Lane1: Mouse  
Skeletal muscle lysate; Lane2: Porcine  
Skeletal muscle lysate; Lane3: Rat  
Skeletal muscle lysate

Primary Ab: 0.3µg/ml Rabbit Anti-  
Mouse IL11Ra Antibody  
Second Ab: 0.2µg/mL HRP-Linked  
Caprine Anti-Rabbit IgG Polyclonal  
Antibody

(Catalog: SAA544Rb19)



FITC staining on IF;

Sample: HeLa cell

Primary Ab: 20µg/ml Rabbit Anti-Mouse

IL11Ra Antibody

Second Ab: 2µg/ml FITC-Linked  
Caprine Anti-Rabbit IgG Polyclonal  
Antibody

(Catalog: SAA544Rb11)

**[ IMPORTANT NOTE ]**

The kit is designed for research use only, we will not be responsible for any issue if the kit was used in clinical diagnostic or any other procedures.