

**PAB641Hu02**

**Polyclonal Antibody to Interleukin 13 Receptor Alpha 1 (IL13Ra1)**

**Organism Species: *Homo sapiens (Human)***

***Instruction manual***

FOR RESEARCH USE ONLY

NOT FOR USE IN CLINICAL DIAGNOSTIC PROCEDURES

---

13th Edition (Revised in Aug, 2023)

## **[ PROPERTIES ]**

**Source:** Polyclonal antibody preparation

**Host:** Rabbit

**Purification:** Antigen-specific affinity chromatography followed by Protein A affinity chromatography

**Traits:** Liquid

**Concentration:** 0.44mg/mL

**UOM:** 100µg(227µL)

**Cross Reactivity:** Porcine

**Applications:** WB; IHC; ICC; IP.

## **[ IMMUNOGEN ]**

**Immunogen:** Recombinant IL13Ra1 (His137~Ala210 (Accession # P78552)) expressed in *E.coli*

**Accession No.:** RPB641Hu02

## **[ APPLICATIONS ]**

Western blotting: 0.01-2µg/mL;

Immunohistochemistry: 5-20µg/mL;

Immunocytochemistry: 5-20µg/mL;

Optimal working dilutions must be determined by end user.

## **[ FORMULATION ]**

**Form & Buffer:** Supplied as solution form in PBS, pH7.4, containing 0.02% NaN<sub>3</sub>, 50% glycerol.

## **[ STORAGE AND STABILITY ]**

**Storage:** Avoid repeated freeze/thaw cycles.

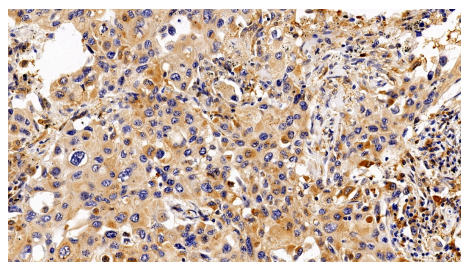
Store at 4°C for frequent use.

Aliquot and store at -20°C for 24 months.

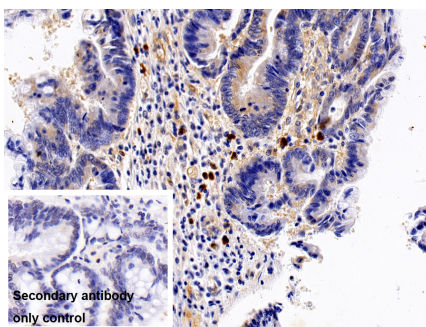
**Stability Test:** The thermal stability is described by the loss rate. The loss rate was determined

by accelerated thermal degradation test, that is, incubate the protein at 37°C for 48h, and no obvious degradation and precipitation were observed. The loss rate is less than 5% within the expiration date under appropriate storage condition.

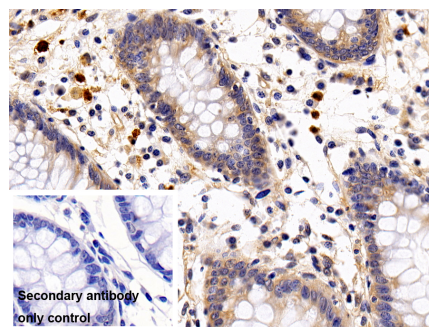
## [ IDENTIFICATION ]



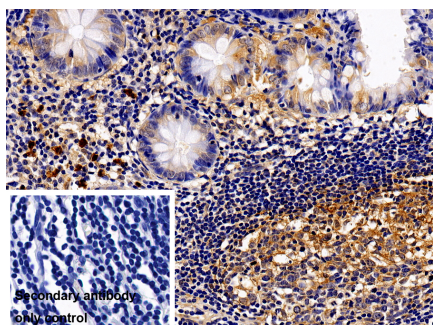
DAB staining on IHC-P; Sample:  
Human Lung cancer Tissue; Primary  
Ab: 10 $\mu$ g/ml Rabbit Anti-Human  
IL13Ra1 Antibody Second Ab:  
2 $\mu$ g/mL HRP-Linked Caprine Anti-  
Rabbit IgG Polyclonal Antibody  
(Catalog: SAA544Rb19)



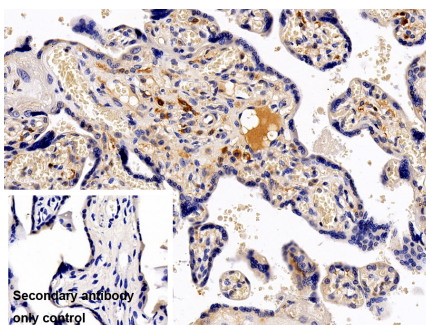
DAB staining on IHC-P;  
Sample: Human Colorectal cancer  
Tissue;  
Primary Ab: 10 $\mu$ g/ml Rabbit Anti-  
Human IL13Ra1 Antibody  
Second Ab: 2 $\mu$ g/mL HRP-Linked  
Caprine Anti-Rabbit IgG Polyclonal  
Antibody  
(Catalog: SAA544Rb19)



DAB staining on IHC-P;  
Sample: Human Rectum Tissue;  
Primary Ab: 10 $\mu$ g/ml Rabbit Anti-  
Human IL13Ra1 Antibody  
Second Ab: 2 $\mu$ g/mL HRP-Linked  
Caprine Anti-Rabbit IgG Polyclonal  
Antibody  
(Catalog: SAA544Rb19)



DAB staining on IHC-P;  
Sample: Human Appendix Tissue;  
Primary Ab: 10 $\mu$ g/ml Rabbit Anti-  
Human IL13Ra1 Antibody  
Second Ab: 2 $\mu$ g/mL HRP-Linked  
Caprine Anti-Rabbit IgG Polyclonal  
Antibody



DAB staining on IHC-P;  
Sample: Human Placenta Tissue;  
Primary Ab: 10 $\mu$ g/ml Rabbit Anti-  
Human IL13Ra1 Antibody  
Second Ab: 2 $\mu$ g/mL HRP-Linked  
Caprine Anti-Rabbit IgG Polyclonal  
Antibody

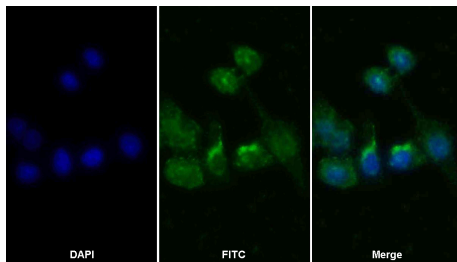


Western Blot; Sample: Porcine Liver  
lysate;  
Primary Ab: 2 $\mu$ g/ml Rabbit Anti-Human  
IL13Ra1 Antibody  
Second Ab: 0.2 $\mu$ g/mL HRP-Linked  
Caprine Anti-Rabbit IgG Polyclonal  
Antibody

(Catalog: SAA544Rb19)

(Catalog: SAA544Rb19)

(Catalog: SAA544Rb19) Selected



FITC staining on IF;

Sample: Human HepG2 cell;

Primary Ab: 20ug/ml Rabbit Anti-

Human IL13Ra1 Antibody

Second Ab: 2µg/ml FITC-Linked

Caprine Anti-Rabbit IgG Polyclonal

Antibody

(Catalog: SAA544Rb18)

### [ **IMPORTANT NOTE** ]

The kit is designed for research use only, we will not be responsible for any issue if the kit was used in clinical diagnostic or any other procedures.