

**PAB643Hu01**

**Polyclonal Antibody to Interleukin 13 Receptor Alpha 2 (IL13Ra2)**

**Organism Species: *Homo sapiens (Human)***

***Instruction manual***

FOR RESEARCH USE ONLY

NOT FOR USE IN CLINICAL DIAGNOSTIC PROCEDURES

---

13th Edition (Revised in Aug, 2023)

### **[ PROPERTIES ]**

**Source:** Polyclonal antibody preparation

**Host:** Rabbit

**Purification:** Antigen-specific affinity chromatography followed by Protein A affinity chromatography

**Traits:** Liquid

**Concentration:** 0.5mg/mL

**UOM:** 100 $\mu$ L

**Cross Reactivity:** N/A

**Applications:** WB; IHC

### **[ IMMUNOGEN ]**

**Immunogen:** Recombinant IL13Ra2 (Pro238~Glu334) expressed in *E.coli*

**Accession No.:** RPB643Hu01

### **[ APPLICATIONS ]**

Western blotting: 0.01-2 $\mu$ g/mL;

Immunohistochemistry: 5-20 $\mu$ g/mL;

Optimal working dilutions must be determined by end user.

### **[ FORMULATION ]**

**Form & Buffer:** Supplied as solution form in 0.01M PBS, pH7.4, containing 0.05% Proclin-300, 50% glycerol.

### **[ STORAGE AND STABILITY ]**

**Storage:** Avoid repeated freeze/thaw cycles.

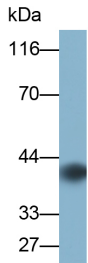
Store at 4°C for frequent use.

Aliquot and store at -20°C for 24 months.

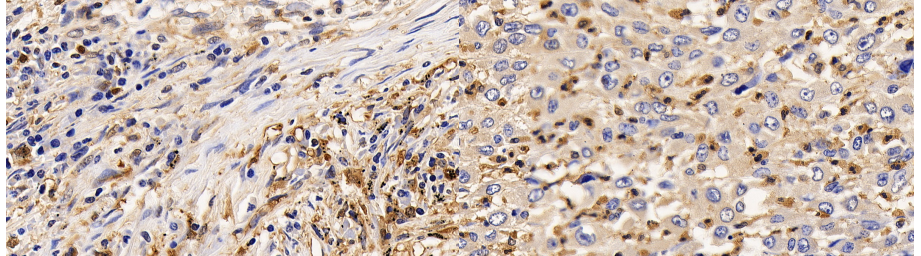
**Stability Test:** The thermal stability is described by the loss rate. The loss rate was determined by accelerated thermal degradation test, that is, incubate the protein at 37°C for 48h, and no obvious degradation and precipitation were observed. The loss rate is less than 5% within the

expiration date under appropriate storage condition.

**[ IDENTIFICATION ]**

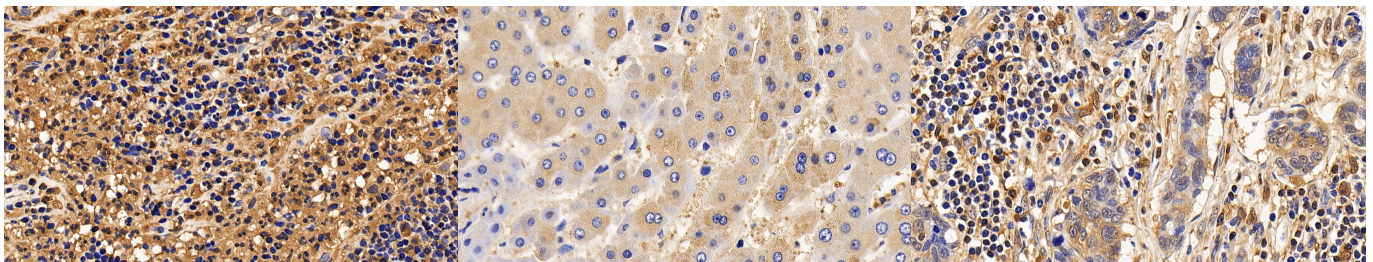


Western Blot; Sample: Hela cell lysate  
 Primary Ab: 0.2µg/ml Rabbit Anti-Human IL13Ra2 Antibody  
 Second Ab: 0.2µg/ml HRP-Linked Caprine Anti-Rabbit IgG Polyclonal Antibody  
 (Catalog: SAA544Rb19)



DAB staining on IHC-P; Sample: Human Lung cancer Tissue; Primary Ab: 20µg/ml Rabbit Anti-Human IL13Ra2 Antibody  
 Second Ab: 2µg/mL HRP-Linked Caprine Anti-Rabbit IgG Polyclonal Antibody  
 (Catalog: SAA544Rb19)

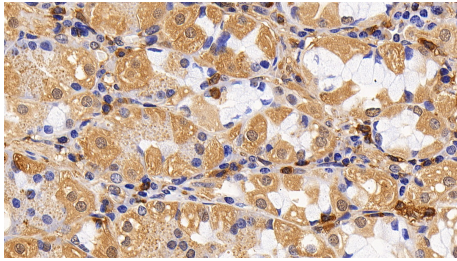
DAB staining on IHC-P; Sample: Human Liver cancer Tissue; Primary Ab: 20µg/ml Rabbit Anti-Human IL13Ra2 Antibody  
 Second Ab: 2µg/mL HRP-Linked Caprine Anti-Rabbit IgG Polyclonal Antibody  
 (Catalog: SAA544Rb19)



DAB staining on IHC-P; Sample: Human Appendix Tissue; Primary Ab: 20µg/ml Rabbit Anti-Human IL13Ra2 Antibody  
 Second Ab: 2µg/mL HRP-Linked Caprine Anti-Rabbit IgG Polyclonal Antibody  
 (Catalog: SAA544Rb19)

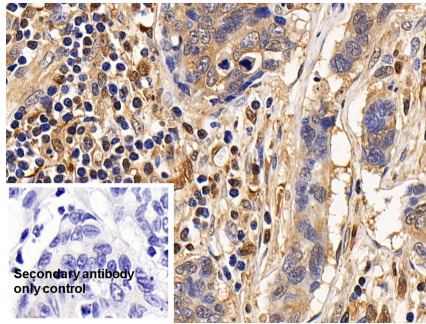
DAB staining on IHC-P; Sample: Human Liver Tissue; Primary Ab: 20µg/ml Rabbit Anti-Human IL13Ra2 Antibody  
 Second Ab: 2µg/mL HRP-Linked Caprine Anti-Rabbit IgG Polyclonal Antibody  
 (Catalog: SAA544Rb19)

DAB staining on IHC-P; Sample: Human Lymphoma Tissue; Primary Ab: 20µg/ml Rabbit Anti-Human IL13Ra2 Antibody  
 Second Ab: 2µg/mL HRP-Linked Caprine Anti-Rabbit IgG Polyclonal Antibody  
 (Catalog: SAA544Rb19)



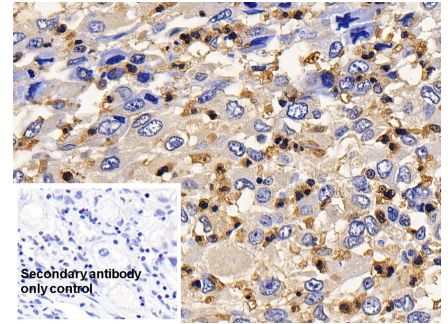
DAB staining on IHC-P;

Sample: Human Stomach Tissue;  
 Primary Ab: 20µg/ml Rabbit Anti-Human IL13Ra2 Antibody  
 Second Ab: 2µg/mL HRP-Linked Caprine Anti-Rabbit IgG Polyclonal Antibody  
 (Catalog: SAA544Rb19)



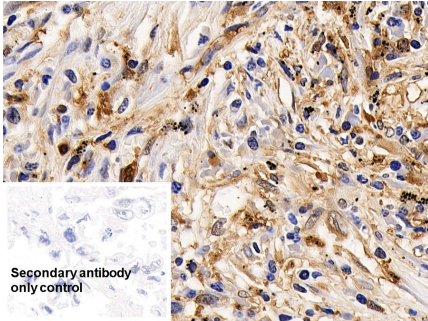
DAB staining on IHC-P;

Sample: Human Lymphoma Tissue  
 Primary Ab: 20µg/ml Rabbit Anti-Human IL13Ra2 Antibody  
 Control: Used PBS instead of primary antibody  
 Second Ab: 2µg/ml HRP-Linked Caprine Anti-Rabbit IgG Polyclonal Antibody  
 (Catalog: SAA544Rb19)



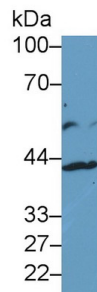
DAB staining on IHC-P;

Sample: Human Liver cancer Tissue  
 Primary Ab: 20µg/ml Rabbit Anti-Human IL13Ra2 Antibody  
 Control: Used PBS instead of primary antibody  
 Second Ab: 2µg/ml HRP-Linked Caprine Anti-Rabbit IgG Polyclonal Antibody  
 (Catalog: SAA544Rb19)

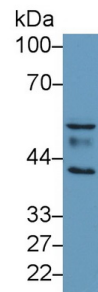


DAB staining on IHC-P;

Sample: Human Lung cancer Tissue  
 Primary Ab: 20µg/ml Rabbit Anti-Human IL13Ra2 Antibody  
 Control: Used PBS instead of primary antibody  
 Second Ab: 2µg/ml HRP-Linked Caprine Anti-Rabbit IgG Polyclonal Antibody  
 (Catalog: SAA544Rb19)



Western Blot; Sample: Human HepG2 cell lysate;  
 Primary Ab: 1µg/ml Rabbit Anti-Human IL13Ra2 Antibody  
 Second Ab: 0.2µg/mL HRP-Linked Caprine Anti-Rabbit IgG Polyclonal Antibody  
 (Catalog: SAA544Rb19)



Western Blot; Sample: Human Lung lysate;  
 Primary Ab: 1µg/ml Rabbit Anti-Human IL13Ra2 Antibody  
 Second Ab: 0.2µg/mL HRP-Linked Caprine Anti-Rabbit IgG Polyclonal Antibody  
 (Catalog: SAA544Rb19)

**[ IMPORTANT NOTE ]**

The kit is designed for research use only, we will not be responsible for any issue if the kit was used in clinical diagnostic or any other procedures.