

**PAA079Hu06**

**Polyclonal Antibody to Interleukin 6 (IL6)**

**Organism Species: *Homo sapiens* (Human)**

***Instruction manual***

FOR RESEARCH USE ONLY

NOT FOR USE IN CLINICAL DIAGNOSTIC PROCEDURES

---

13th Edition (Revised in Aug, 2023)

**[ PROPERTIES ]**

**Source:** Polyclonal antibody preparation

**Host:** Rabbit

**Purification:** Antigen-specific affinity chromatography followed by Protein A affinity chromatography

**Traits:** Liquid

**Concentration:** 0.5mg/mL

**UOM:** 100µg(200µL)

**Cross Reactivity:** N/A

**Applications:** FCM

**[ IMMUNOGEN ]**

**Immunogen:** Recombinant IL6 (Val30~Met212) expressed in 293F cell

**Accession No.:** EPA079Hu61

**[ APPLICATIONS ]**

Flow cytometry: 20µg/mL;

Optimal working dilutions must be determined by end user.

**[ FORMULATION ]**

**Form & Buffer:** Supplied as solution form in 0.01M PBS, pH7.4, containing 0.05% Proclin-300, 50% glycerol.

**[ STORAGE AND STABILITY ]**

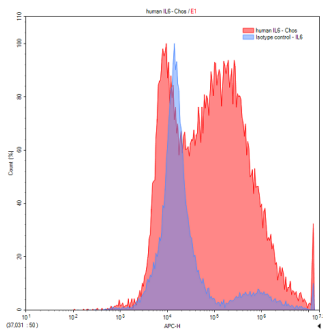
**Storage:** Avoid repeated freeze/thaw cycles.

Store at 4°C for frequent use.

Aliquot and store at -20°C for 24 months.

**Stability Test:** The thermal stability is described by the loss rate. The loss rate was determined by accelerated thermal degradation test, that is, incubate the protein at 37°C for 48h, and no obvious degradation and precipitation were observed. The loss rate is less than 5% within the expiration date under appropriate storage condition.

## [ IDENTIFICATION ]



Chos line transfected with human IL6  
?Transient transfection? was stained  
with rabbit Anti-human IL6 Polyclonal  
Antibody (Catalog # PAA079Hu06),  
filled red histogram) or Isotype control  
antibody (Catalog # IS067-Rb01, filled  
blue histogram), followed by  
CY5-conjugated Anti-rabbit IgG  
Secondary Antibody (Catalog #  
SAA544Rb11). Cells were fixed with  
4% paraformaldehyde and  
permeabilized with 0.1% Triton X-100.

## [ IMPORTANT NOTE ]

The kit is designed for research use only, we will not be responsible for any issue if the kit was used in clinical diagnostic or any other procedures.