

PAA080Ov01

Polyclonal Antibody to Interleukin 8 (IL8)

Organism Species: *Ovis aries*; *Ovine (Sheep)*

Instruction manual

FOR RESEARCH USE ONLY

NOT FOR USE IN CLINICAL DIAGNOSTIC PROCEDURES

13th Edition (Revised in Aug, 2023)

[PROPERTIES]

Source: Polyclonal antibody preparation

Host: Rabbit

Purification: Antigen-specific affinity chromatography followed by Protein A affinity chromatography

Traits: Liquid

Concentration: 1mg/mL

UOM: 100µL

Cross Reactivity: Human

Applications: WB

[IMMUNOGEN]

Immunogen: Recombinant IL8 (Ala23~Pro101) expressed in *E.coli*

Accession No.: RPA080Ov01

[APPLICATIONS]

Western blotting: 0.01-2µg/mL;

Optimal working dilutions must be determined by end user.

[FORMULATION]

Form & Buffer: Supplied as solution form in PBS, pH7.4, containing 0.02% NaN₃, 50% glycerol.

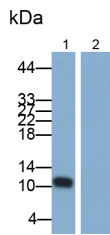
[STORAGE AND STABILITY]

Storage: Avoid repeated freeze/thaw cycles.

Store at 4°C for frequent use.

Aliquot and store at -20°C for 24 months.

Stability Test: The thermal stability is described by the loss rate. The loss rate was determined by accelerated thermal degradation test, that is, incubate the protein at 37°C for 48h, and no obvious degradation and precipitation were observed. The loss rate is less than 5% within the expiration date under appropriate storage condition.

[IDENTIFICATION]

Western Blot; Samples: Lane1: THP1 treated with 10µg/ml LPS and 10µg/ml ConA for 72 hours, cell supernatant;
Lane2: Untreated THP1 cell lysate;
Primary Ab: 0.2µg/ml Rabbit Anti-Ovine IL8 Antibody
Second Ab: 0.2µg/ml HRP-Linked Caprine Anti-Rabbit IgG Polyclonal Antibody
(Catalog: SAA544Rb19)

[IMPORTANT NOTE]

The kit is designed for research use only, we will not be responsible for any issue if the kit was used in clinical diagnostic or any other procedures.