

PAB370Hu01

Polyclonal Antibody to Lactate Dehydrogenase A (LDHA)

Organism Species: *Homo sapiens (Human)*

Instruction manual

FOR RESEARCH USE ONLY

NOT FOR USE IN CLINICAL DIAGNOSTIC PROCEDURES

13th Edition (Revised in Aug, 2023)

[PROPERTIES]

Source: Polyclonal antibody preparation

Host: Rabbit

Purification: Antigen-specific affinity chromatography followed by Protein A affinity chromatography

Traits: Liquid

Concentration: 0.5mg/mL

UOM: 100µL

Cross Reactivity: Mouse;Rat;Porcine

Applications: WB; IHC; ICC/IF

[IMMUNOGEN]

Immunogen: Recombinant LDHA (Met1~Phe332 plus VPVC between Ser197 and Val198) expressed in *E.coli*

Accession No.: RPB370Hu01

[APPLICATIONS]

Western blotting: 0.01-2µg/mL;

Immunohistochemistry: 5-20µg/mL;

Immunofluorescence: 5-20µg/mL;

Optimal working dilutions must be determined by end user.

[FORMULATION]

Form & Buffer: Supplied as solution form in 0.01M PBS, pH7.4, containing 0.05% Proclin-300, 50% glycerol.

[STORAGE AND STABILITY]

Storage: Avoid repeated freeze/thaw cycles.

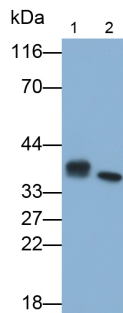
Store at 4°C for frequent use.

Aliquot and store at -20°C for 24 months.

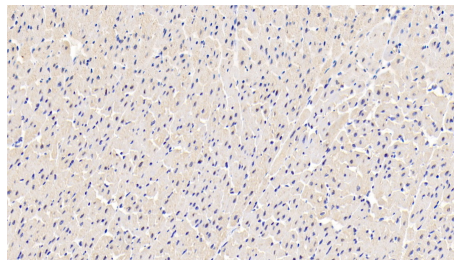
Stability Test: The thermal stability is described by the loss rate. The loss rate was determined

by accelerated thermal degradation test, that is, incubate the protein at 37°C for 48h, and no obvious degradation and precipitation were observed. The loss rate is less than 5% within the expiration date under appropriate storage condition.

[IDENTIFICATION]

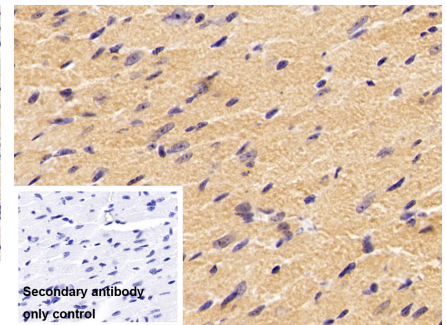


Western Blot; Samples: Lane1: Mouse Kidney lysate; Lane2: Rat Kidney lysate; Primary Ab: 0.1µg/ml Rabbit Anti-Human LDHA Antibody Second Ab: 0.2µg/ml HRP-Linked Caprine Anti-Rabbit IgG Polyclonal Antibody (Catalog: SAA544Rb19)



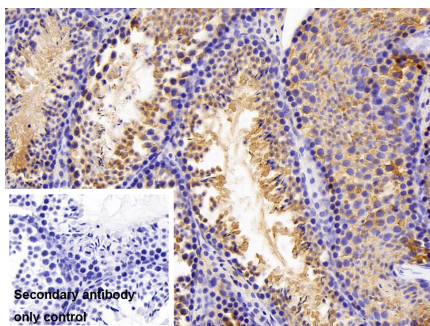
DAB staining on IHC-P; Samples:

Human Cardiac Muscle Tissue; Primary Ab: 20?g/ml Rabbit Anti-Human LDHA Antibody Second Ab: 2µg/mL HRP-Linked Caprine Anti-Rabbit IgG Polyclonal Antibody (Catalog: SAA544Rb19)



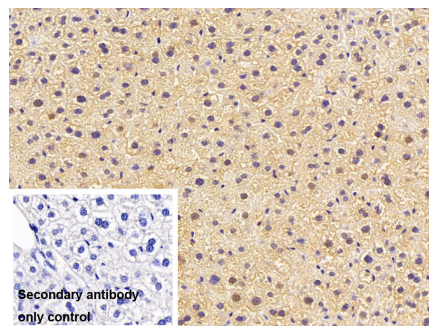
DAB staining on IHC-P;

Sample: Mouse Cardiac Muscle Tissue Primary Ab: 10µg/ml Rabbit Anti-Human LDHA Antibody Control: Used PBS instead of primary antibody Second Ab: 2?g/ml HRP-Linked Caprine Anti-Rabbit IgG Polyclonal Antibody (Catalog: SAA544Rb19)



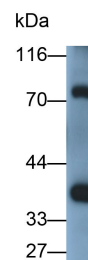
DAB staining on IHC-P;

Sample: Mouse Testis Tissue Primary Ab: 10µg/ml Rabbit Anti-Human LDHA Antibody Control: Used PBS instead of primary antibody



DAB staining on IHC-P;

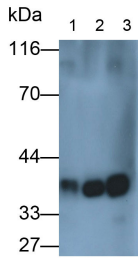
Sample: Mouse Liver Tissue Primary Ab: 10µg/ml Rabbit Anti-Human LDHA Antibody Control: Used PBS instead of primary antibody



Western Blot; Sample: Porcine Kidney lysate

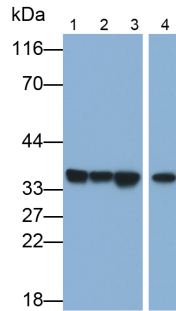
Primary Ab: 0.15µg/ml Rabbit Anti-Human LDHA Antibody Second Ab: 0.2?g/ml HRP-Linked Caprine Anti-Rabbit IgG Polyclonal

Second Ab: 2?g/ml HRP-Linked
 Caprine Anti-Rabbit IgG Polyclonal
 Antibody
 (Catalog: SAA544Rb19)



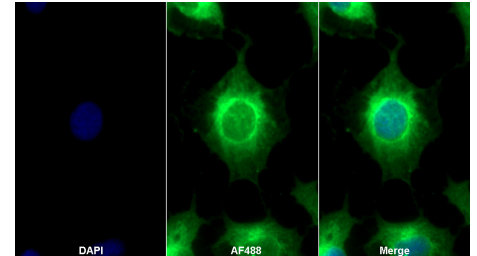
Western Blot; Samples: Lane1: Mouse
 Testis lysate; Lane2: A431 cell lysate;
 Lane3: A375 cell lysate;
 Primary Ab: 0.15µg/ml Rabbit Anti-
 Human LDHA Antibody
 Second Ab: 0.2?g/ml HRP-Linked
 Caprine Anti-Rabbit IgG Polyclonal
 Antibody
 (Catalog: SAA544Rb19)

Second Ab: 2?g/ml HRP-Linked
 Caprine Anti-Rabbit IgG Polyclonal
 Antibody
 (Catalog: SAA544Rb19)



Western Blot; Samples: Lane1: 293T
 cell lysate; Lane2: Jurkat cell lysate;
 Lane3: Hela cell lysate; Lane4: MCF7
 cell lysate;
 Primary Ab: 0.1µg/ml Rabbit Anti-
 Human LDHA Antibody
 Second Ab: 0.2µg/ml HRP-Linked
 Caprine Anti-Rabbit IgG Polyclonal
 Antibody
 (Catalog: SAA544Rb19)

Antibody
 (Catalog: SAA544Rb19)



AF488 staining on IF;
 Sample: A549 cell
 Primary Ab: 20µg/ml Rabbit Anti-
 Human LDHA Antibody
 Second Ab: 2?g/ml AF488-Linked
 Caprine Anti-Rabbit IgG Polyclonal
 Antibody
 (Catalog: SAA544Rb11)

[IMPORTANT NOTE]

The kit is designed for research use only, we will not be responsible for any issue if the kit was used in clinical diagnostic or any other procedures.