

**PAB370Hu01**

**Polyclonal Antibody to Lactate Dehydrogenase A (LDHA)**

**Organism Species: *Homo sapiens (Human)***

***Instruction manual***

FOR RESEARCH USE ONLY

NOT FOR USE IN CLINICAL DIAGNOSTIC PROCEDURES

---

13th Edition (Revised in Aug, 2023)

### [ **PROPERTIES** ]

**Source:** Polyclonal antibody preparation

**Host:** Rabbit

**Purification:** Antigen-specific affinity chromatography followed by Protein A affinity chromatography

**Traits:** Liquid

**Concentration:** 0.5mg/mL

**UOM:** 100µL

**Cross Reactivity:** Mouse;Rat;Porcine.

**Applications:** WB; IHC; ICC; IP.

### [ **IMMUNOGEN** ]

**Immunogen:** Recombinant LDHA (Met1~Phe332 plus VPVC between Ser197 and Val198) expressed in *E.coli*

**Accession No.:** RPB370Hu01

### [ **APPLICATIONS** ]

Western blotting: 0.01-2µg/mL;

Immunohistochemistry: 5-20µg/mL;

Immunocytochemistry: 5-20µg/mL;

Optimal working dilutions must be determined by end user.

### [ **FORMULATION** ]

**Form & Buffer:** Supplied as solution form in 0.01M PBS, pH7.4, containing 0.05% Proclin-300, 50% glycerol.

### [ **STORAGE AND STABILITY** ]

**Storage:** Avoid repeated freeze/thaw cycles.

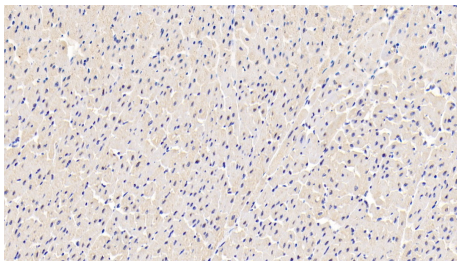
Store at 4°C for frequent use.

Aliquot and store at -20°C for 24 months.

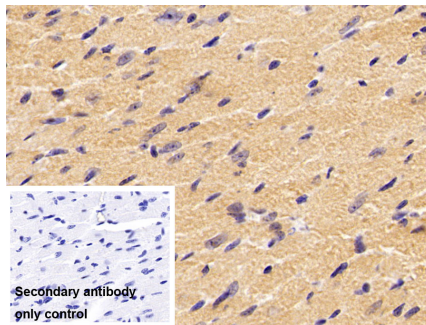
**Stability Test:** The thermal stability is described by the loss rate. The loss rate was determined

by accelerated thermal degradation test, that is, incubate the protein at 37°C for 48h, and no obvious degradation and precipitation were observed. The loss rate is less than 5% within the expiration date under appropriate storage condition.

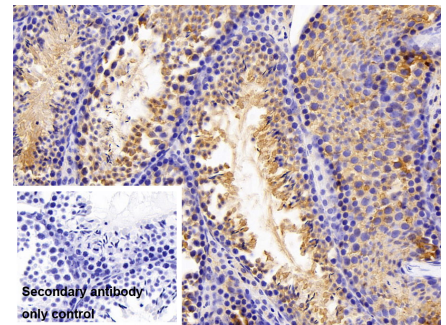
**[ IDENTIFICATION ]**



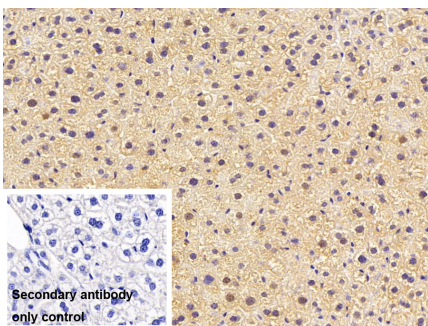
DAB staining on IHC-P; Samples:  
Human Cardiac Muscle Tissue; Primary  
Ab: 20?g/ml Rabbit Anti-Human LDHA  
Antibody Second Ab: 2?g/mL HRP-  
Linked Caprine Anti-Rabbit IgG  
Polyclonal Antibody (Catalog:  
SAA544Rb19)



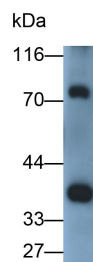
DAB staining on IHC-P;  
Sample: Mouse Cardiac Muscle Tissue  
Primary Ab: 10?g/ml Rabbit Anti-  
Human LDHA Antibody  
Control: Used PBS instead of primary  
antibody  
Second Ab: 2?g/ml HRP-Linked  
Caprine Anti-Rabbit IgG Polyclonal  
Antibody  
(Catalog: SAA544Rb19)



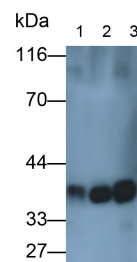
DAB staining on IHC-P;  
Sample: Mouse Testis Tissue  
Primary Ab: 10?g/ml Rabbit Anti-  
Human LDHA Antibody  
Control: Used PBS instead of primary  
antibody  
Second Ab: 2?g/ml HRP-Linked  
Caprine Anti-Rabbit IgG Polyclonal  
Antibody  
(Catalog: SAA544Rb19)



DAB staining on IHC-P;  
Sample: Mouse Liver Tissue  
Primary Ab: 10?g/ml Rabbit Anti-  
Human LDHA Antibody  
Control: Used PBS instead of primary  
antibody



Western Blot; Sample: Porcine Kidney  
lysate  
Primary Ab: 0.15?g/ml Rabbit Anti-  
Human LDHA Antibody  
Second Ab: 0.2?g/ml HRP-Linked  
Caprine Anti-Rabbit IgG Polyclonal

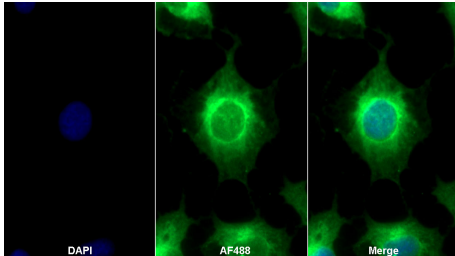


Western Blot; Samples: Lane1: Mouse  
Testis lysate; Lane2: A431 cell lysate;  
Lane3: A375 cell lysate;  
Primary Ab: 0.15?g/ml Rabbit Anti-  
Human LDHA Antibody  
Second Ab: 0.2?g/ml HRP-Linked

Second Ab: 2?g/ml HRP-Linked  
Caprine Anti-Rabbit IgG Polyclonal  
Antibody  
(Catalog: SAA544Rb19)

Antibody  
(Catalog: SAA544Rb19)

Caprine Anti-Rabbit IgG Polyclonal  
Antibody  
(Catalog: SAA544Rb19)



AF488 staining on IF;

Sample: A549 cell

Primary Ab: 20µg/ml Rabbit Anti-  
Human LDHA Antibody

Second Ab: 2?g/ml AF488-Linked  
Caprine Anti-Rabbit IgG Polyclonal  
Antibody  
(Catalog: SAA544Rb11)

### [ **IMPORTANT NOTE** ]

The kit is designed for research use only, we will not be responsible for any issue if the kit was used in clinical diagnostic or any other procedures.