

PAB352Mu01

Polyclonal Antibody to Macrophage Expressed Gene 1 Protein (MPG1)

Organism Species: *Mus musculus* (Mouse)

Instruction manual

FOR RESEARCH USE ONLY

NOT FOR USE IN CLINICAL DIAGNOSTIC PROCEDURES

13th Edition (Revised in Aug, 2023)

[PROPERTIES]

Source: Polyclonal antibody preparation

Host: Rabbit

Purification: Antigen-specific affinity chromatography followed by Protein A affinity chromatography

Traits: Liquid

Concentration: 0.29mg/mL

UOM: 100 μ L

Cross Reactivity: N/A

Applications: IHC;ICC/IF

[IMMUNOGEN]

Immunogen: Recombinant MPG1 (Cys41~Ala313) expressed in *E.coli*

Accession No.: RPB352Mu01

[APPLICATIONS]

Immunohistochemistry: 5-20 μ g/mL;

Immunofluorescence: 5-20 μ g/mL;

Optimal working dilutions must be determined by end user.

[FORMULATION]

Form & Buffer: Supplied as solution form in 0.01M PBS, pH7.4, containing 0.05% Proclin-300, 50% glycerol.

[STORAGE AND STABILITY]

Storage: Avoid repeated freeze/thaw cycles.

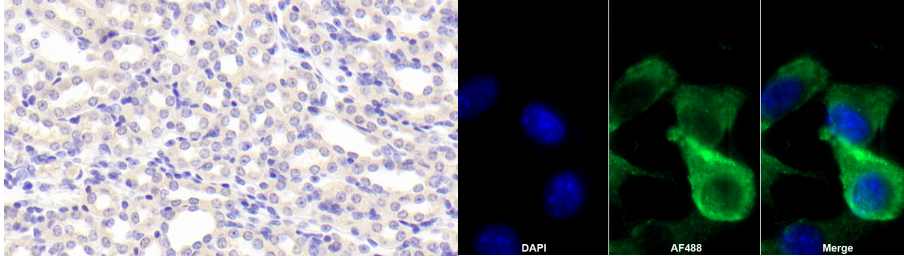
Store at 4°C for frequent use.

Aliquot and store at -20°C for 24 months.

Stability Test: The thermal stability is described by the loss rate. The loss rate was determined by accelerated thermal degradation test, that is, incubate the protein at 37°C for 48h, and no obvious degradation and precipitation were observed. The loss rate is less than 5% within the

expiration date under appropriate storage condition.

[IDENTIFICATION]



DAB staining on IHC-P; Samples:
Mouse Kidney Tissue; Primary Ab:
20µg/ml Rabbit Anti-Mouse MPEG1
Antibody Second Ab: 2µg/mL HRP-
Linked Caprine Anti-Rabbit IgG
Polyclonal Antibody (Catalog:
SAA544Rb19)

AF488 staining on IF;
Sample: BNL 1ME A.7R.1 cell
Primary Ab: 20µg/ml Rabbit Anti-Mouse
MPEG1 Antibody
Second Ab: 2µg/ml AF488-Linked
Caprine Anti-Rabbit IgG Polyclonal
Antibody
(Catalog: SAA544Rb11)

[IMPORTANT NOTE]

The kit is designed for research use only, we will not be responsible for any issue if the kit was used in clinical diagnostic or any other procedures.