

PAA402Ra02

Polyclonal Antibody to Matrix Metalloproteinase 12 (MMP12)

Organism Species: *Rattus norvegicus* (Rat)

Instruction manual

FOR RESEARCH USE ONLY

NOT FOR USE IN CLINICAL DIAGNOSTIC PROCEDURES

13th Edition (Revised in Aug, 2023)

[**PROPERTIES**]

Source: Polyclonal antibody preparation

Host: Rabbit

Purification: Antigen-specific affinity chromatography followed by Protein A affinity chromatography

Traits: Liquid

Concentration: 0.5mg/mL

UOM: 10 μ L

Cross Reactivity: Human

Applications: WB; IHC

[**IMMUNOGEN**]

Immunogen: Recombinant MMP12 (Cys100~Pro286) expressed in *E.coli*

Accession No.: RPA402Ra02

[**APPLICATIONS**]

Western blotting: 0.01-2 μ g/mL;

Immunohistochemistry: 5-20 μ g/mL;

Optimal working dilutions must be determined by end user.

[**FORMULATION**]

Form & Buffer: Supplied as solution form in PBS, pH7.4, containing 0.02% NaN₃, 50% glycerol.

[**STORAGE AND STABILITY**]

Storage: Avoid repeated freeze/thaw cycles.

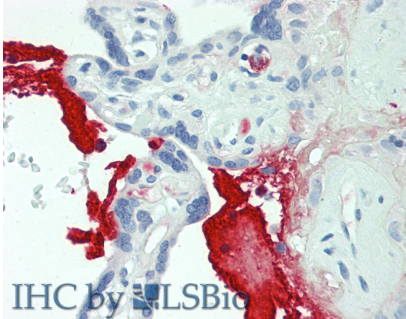
Store at 4°C for frequent use.

Aliquot and store at -20°C for 24 months.

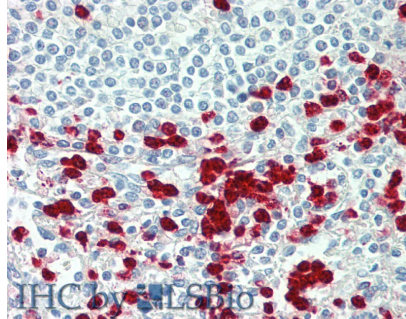
Stability Test: The thermal stability is described by the loss rate. The loss rate was determined by accelerated thermal degradation test, that is, incubate the protein at 37°C for 48h, and no obvious degradation and precipitation were observed. The loss rate is less than 5% within the

expiration date under appropriate storage condition.

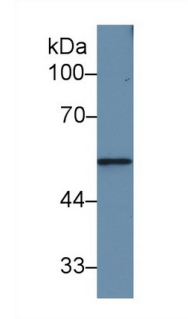
[IDENTIFICATION]



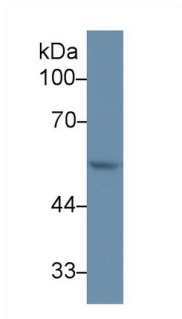
Vector Red staining on IHC-P;
 Samples: Human Placenta Tissue;
 Primary Ab: 10µg/ml Rabbit Anti-Human MMP12 Antibody
 Second Ab: 2µg/mL HRP-Linked Caprine Anti-Rabbit IgG Polyclonal Antibody



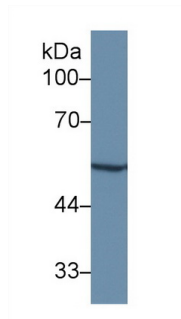
Vector Red staining on IHC-P;
 Samples: Human Spleen Tissue;
 Primary Ab: 10µg/ml Rabbit Anti-Human MMP12 Antibody
 Second Ab: 2µg/mL HRP-Linked Caprine Anti-Rabbit IgG Polyclonal Antibody



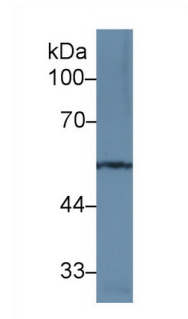
Western Blot; Sample: Rat Small intestine lysate;
 Primary Ab: 1µg/ml Rabbit Anti-Rat MMP12 Antibody
 Second Ab: 0.2µg/mL HRP-Linked Caprine Anti-Rabbit IgG Polyclonal Antibody
 (Catalog: SAA544Rb19) Selected



Western Blot; Sample: Rat Thymus lysate;
 Primary Ab: 1µg/ml Rabbit Anti-Rat MMP12 Antibody
 Second Ab: 0.2µg/mL HRP-Linked Caprine Anti-Rabbit IgG Polyclonal Antibody
 (Catalog: SAA544Rb19) Selected



Western Blot; Sample: Rat Liver lysate;
 Primary Ab: 1µg/ml Rabbit Anti-Rat MMP12 Antibody
 Second Ab: 0.2µg/mL HRP-Linked Caprine Anti-Rabbit IgG Polyclonal Antibody
 (Catalog: SAA544Rb19) Selected



Western Blot; Sample: Rat Spinal cord lysate;
 Primary Ab: 1µg/ml Rabbit Anti-Rat MMP12 Antibody
 Second Ab: 0.2µg/mL HRP-Linked Caprine Anti-Rabbit IgG Polyclonal Antibody
 (Catalog: SAA544Rb19) Selected

[IMPORTANT NOTE]

The kit is designed for research use only, we will not be responsible for any issue if the kit was used in clinical diagnostic or any other procedures.