

PAD562Hu01

Polyclonal Antibody to Mitogen Activated Protein Kinase Kinase 2 (MAP2K2)

Organism Species: *Homo sapiens (Human)*

Instruction manual

FOR RESEARCH USE ONLY

NOT FOR USE IN CLINICAL DIAGNOSTIC PROCEDURES

13th Edition (Revised in Aug, 2023)

[PROPERTIES]

Source: Polyclonal antibody preparation

Host: Rabbit

Purification: Antigen-specific affinity chromatography followed by Protein A affinity chromatography

Traits: Liquid

Concentration: 0.5mg/mL

UOM: 20 μ L

Cross Reactivity: Rat;Porcine;Bovine;Equine;Gallus

Applications: WB; ICC/IF

[IMMUNOGEN]

Immunogen: Recombinant MAP2K2 (Val86~Pro331) expressed in *E.coli*

Accession No.: RPD562Hu01

[APPLICATIONS]

Western blotting: 0.01-2 μ g/mL;

Immunofluorescence: 5-20 μ g/mL;

Optimal working dilutions must be determined by end user.

[FORMULATION]

Form & Buffer: Supplied as solution form in 0.01M PBS, pH7.4, containing 0.05% Proclin-300, 50% glycerol.

[STORAGE AND STABILITY]

Storage: Avoid repeated freeze/thaw cycles.

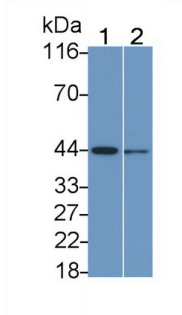
Store at 4°C for frequent use.

Aliquot and store at -20°C for 24 months.

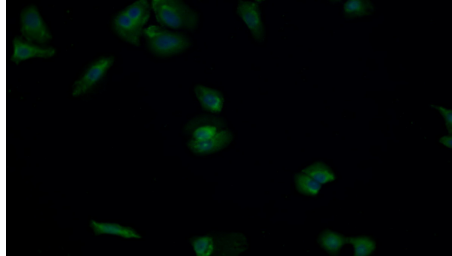
Stability Test: The thermal stability is described by the loss rate. The loss rate was determined by accelerated thermal degradation test, that is, incubate the protein at 37°C for 48h, and no obvious degradation and precipitation were observed. The loss rate is less than 5% within the

expiration date under appropriate storage condition.

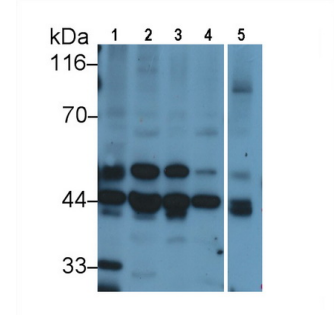
[IDENTIFICATION]



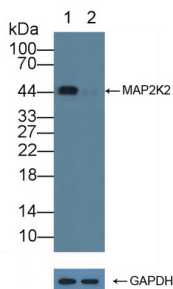
Western Blot; Sample: Lane1: MCF7 cell lysate; Lane2: A549 cell lysate
 Primary Ab: 0.3µg/ml Rabbit Anti-Human MAP2K2 Antibody Second Ab: 0.2µg/mL HRP-Linked Caprine Anti-Rabbit IgG Polyclonal Antibody
 (Catalog: SAA544Rb19)



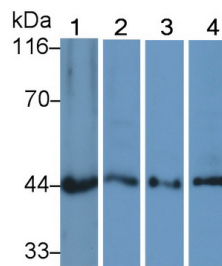
FITC staining on IF; Samples: Human HeLa cell; Primary Ab: 20µg/ml Rabbit Anti-Human MAP2K2 Antibody Second Ab: 1µg/ml FITC-Linked Caprine Anti-Rabbit IgG Polyclonal Antibody
 (Catalog: SAA544Rb18)



Western Blot; Sample: Lane1: Human Lung lysate; Lane2: MCF7 cell lysate; Lane3: Jurkat cell lysate; Lane4: HeLa cell lysate; Lane5: Porcine Cerebrum lysate
 Primary Ab: 2µg/ml Rabbit Anti-Human MAP2K2 Antibody
 Second Ab: 0.2µg/mL HRP-Linked Caprine Anti-Rabbit IgG Polyclonal Antibody
 (Catalog: SAA544Rb19)



Knockout Verification:
 Lane 1: Wild-type HeLa cell lysate;
 Lane 2: MAP2K2 knockout HeLa cell lysate;
 Predicted MW: 44kd
 Observed MW: 44kd
 Primary Ab: 5µg/ml Rabbit Anti-Human MAP2K2 Antibody



Western Blot; Sample: Lane1: Rat Lung lysate; Lane2: Bovine Lung lysate; Lane3: Gallus Lung lysate; Lane4: Equine Lung lysate
 Primary Ab: 0.5µg/ml Rabbit Anti-Human MAP2K2 Antibody
 Second Ab: 0.2µg/mL HRP-Linked Caprine Anti-Rabbit IgG Polyclonal

Second Ab: 0.2µg/mL HRP-Linked

Antibody

Caprine Anti-Rabbit IgG Polyclonal

(Catalog: SAA544Rb19)

Antibody

(Catalog: SAA544Rb19)

[IMPORTANT NOTE]

The kit is designed for research use only, we will not be responsible for any issue if the kit was used in clinical diagnostic or any other procedures.