

**PAA087Mu01**

**Polyclonal Antibody to Monocyte Chemotactic Protein 1 (MCP1)**

**Organism Species: *Mus musculus* (Mouse)**

***Instruction manual***

FOR RESEARCH USE ONLY

NOT FOR USE IN CLINICAL DIAGNOSTIC PROCEDURES

---

13th Edition (Revised in Aug, 2023)

**[ PROPERTIES ]**

**Source:** Polyclonal antibody preparation

**Host:** Rabbit

**Purification:** Antigen-specific affinity chromatography followed by Protein A affinity chromatography

**Traits:** Liquid

**Concentration:** 0.34mg/mL

**UOM:** 20µL

**Cross Reactivity:** N/A

**Applications:** IHC; ICC/IF

**[ IMMUNOGEN ]**

**Immunogen:** Recombinant MCP1 (Gln24~Arg96) expressed in *E.coli*

**Accession No.:** RPA087Mu01

**[ APPLICATIONS ]**

Immunohistochemistry: 5-20µg/mL;

Immunofluorescence: 5-20µg/mL;

Optimal working dilutions must be determined by end user.

**[ FORMULATION ]**

**Form & Buffer:** Supplied as solution form in 0.01M PBS, pH7.4, containing 0.05% Proclin-300, 50% glycerol.

**[ STORAGE AND STABILITY ]**

**Storage:** Avoid repeated freeze/thaw cycles.

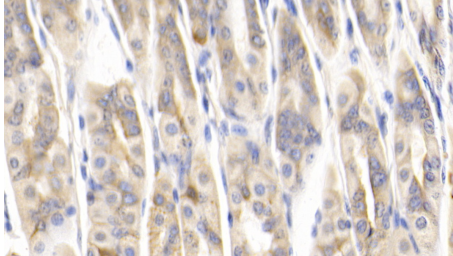
Store at 4°C for frequent use.

Aliquot and store at -20°C for 24 months.

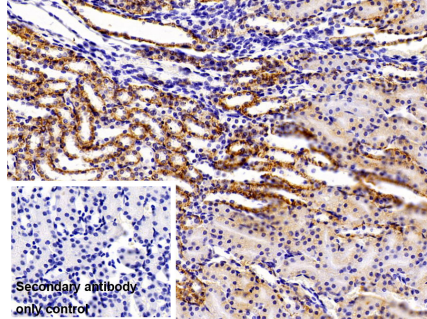
**Stability Test:** The thermal stability is described by the loss rate. The loss rate was determined by accelerated thermal degradation test, that is, incubate the protein at 37°C for 48h, and no obvious degradation and precipitation were observed. The loss rate is less than 5% within the

expiration date under appropriate storage condition.

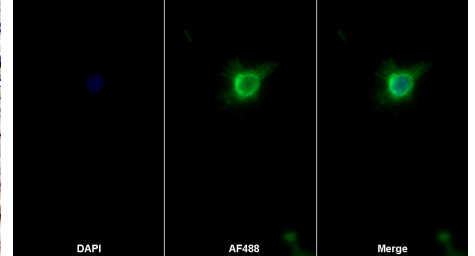
**[ IDENTIFICATION ]**



DAB staining on IHC-P; Samples:  
 Mouse Stomach Tissue; Primary Ab:  
 20?g/ml Rabbit Anti-Mouse MCP1  
 Antibody Second Ab: 2µg/mL HRP-  
 Linked Caprine Anti-Rabbit IgG  
 Polyclonal Antibody (Catalog:  
 SAA544Rb19)



DAB staining on IHC-P;  
 Sample: Mouse Kidney Tissue  
 Primary Ab: 10µg/ml Rabbit Anti-Mouse  
 MCP1 Antibody  
 Control: Used PBS instead of primary  
 antibody  
 Second Ab: 2?g/ml HRP-Linked  
 Caprine Anti-Rabbit IgG Polyclonal  
 Antibody  
 (Catalog: SAA544Rb19)



AF488 staining on IF;  
 Sample: RAW264.7 cell  
 Primary Ab: 20µg/ml Rabbit Anti-Mouse  
 MCP1 Antibody  
 Second Ab: 2?g/ml AF488-Linked  
 Caprine Anti-Rabbit IgG Polyclonal  
 Antibody  
 (Catalog: SAA544Rb11)

**[ IMPORTANT NOTE ]**

The kit is designed for research use only, we will not be responsible for any issue if the kit was used in clinical diagnostic or any other procedures.