

**PAL935Hu01**

**Polyclonal Antibody to Neogenin 1 (NEO1)**

**Organism Species: *Homo sapiens* (Human)**

***Instruction manual***

FOR RESEARCH USE ONLY

NOT FOR USE IN CLINICAL DIAGNOSTIC PROCEDURES

---

13th Edition (Revised in Aug, 2023)

**[ PROPERTIES ]**

**Source:** Polyclonal antibody preparation

**Host:** Rabbit

**Purification:** Antigen-specific affinity chromatography followed by Protein A affinity chromatography

**Traits:** Liquid

**Concentration:** 0.5mg/mL

**UOM:** 100µL

**Cross Reactivity:** Rat

**Applications:** IHC

**[ IMMUNOGEN ]**

**Immunogen:** Recombinant NEO1 (Pro52~Ile426) expressed in *E.coli*

**Accession No.:** RPL935Hu01

**[ APPLICATIONS ]**

Immunohistochemistry: 5-20µg/mL;

Optimal working dilutions must be determined by end user.

**[ FORMULATION ]**

**Form & Buffer:** Supplied as solution form in PBS, pH7.4, containing 0.02% NaN<sub>3</sub>, 50% glycerol.

**[ STORAGE AND STABILITY ]**

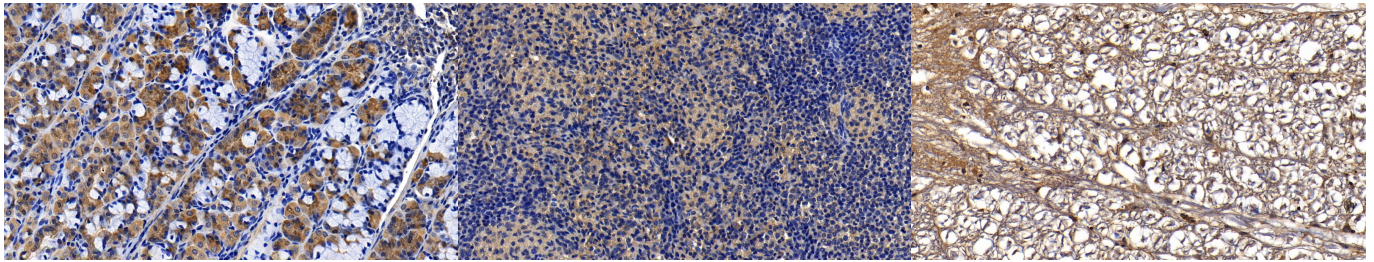
**Storage:** Avoid repeated freeze/thaw cycles.

Store at 4°C for frequent use.

Aliquot and store at -20°C for 24 months.

**Stability Test:** The thermal stability is described by the loss rate. The loss rate was determined by accelerated thermal degradation test, that is, incubate the protein at 37°C for 48h, and no obvious degradation and precipitation were observed. The loss rate is less than 5% within the expiration date under appropriate storage condition.

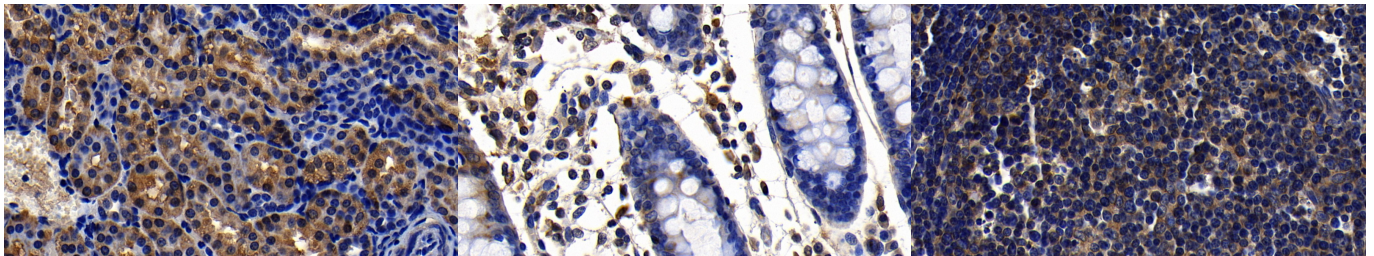
**[ IDENTIFICATION ]**



DAB staining on IHC-P; Sample:  
Human Stomach Tissue; Primary Ab:  
10µg/ml Rabbit Anti-Human NEO1  
Antibody Second Ab: 2µg/mL HRP-  
Linked Caprine Anti-Rabbit IgG  
Polyclonal Antibody (Catalog:  
SAA544Rb19)

DAB staining on IHC-P;  
Sample: Human Spleen Tissue;  
Primary Ab: 10µg/ml Rabbit Anti-  
Human NEO1 Antibody  
Second Ab: 2µg/mL HRP-Linked  
Caprine Anti-Rabbit IgG Polyclonal  
Antibody  
(Catalog: SAA544Rb19)

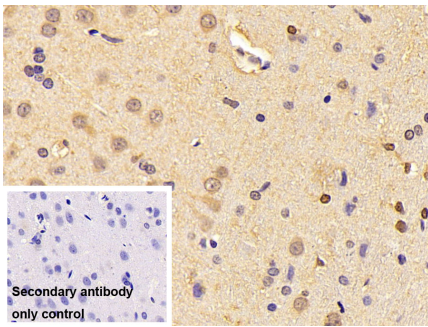
DAB staining on IHC-P;  
Sample: Human Spinal cord Tissue;  
Primary Ab: 10µg/ml Rabbit Anti-  
Human NEO1 Antibody  
Second Ab: 2µg/mL HRP-Linked  
Caprine Anti-Rabbit IgG Polyclonal  
Antibody  
(Catalog: SAA544Rb19)



DAB staining on IHC-P;  
Sample: Human Kidney Tissue;  
Primary Ab: 10µg/ml Rabbit Anti-  
Human NEO1 Antibody  
Second Ab: 2µg/mL HRP-Linked  
Caprine Anti-Rabbit IgG Polyclonal  
Antibody  
(Catalog: SAA544Rb19)

DAB staining on IHC-P;  
Sample: Human Colon Tissue;  
Primary Ab: 10µg/ml Rabbit Anti-  
Human NEO1 Antibody  
Second Ab: 2µg/mL HRP-Linked  
Caprine Anti-Rabbit IgG Polyclonal  
Antibody  
(Catalog: SAA544Rb19)

DAB staining on IHC-P;  
Sample: Human Lymph node Tissue;  
Primary Ab: 10µg/ml Rabbit Anti-  
Human NEO1 Antibody  
Second Ab: 2µg/mL HRP-Linked  
Caprine Anti-Rabbit IgG Polyclonal  
Antibody  
(Catalog: SAA544Rb19)



DAB staining on IHC-P;

Sample: Rat Cerebrum Tissue

Primary Ab: 10µg/ml Rabbit Anti-

Human NEO1 Antibody

Control: Used PBS instead of primary  
antibody

Second Ab: 2µg/ml HRP-Linked

Caprine Anti-Rabbit IgG Polyclonal

Antibody

(Catalog: SAA544Rb19)

### **[ IMPORTANT NOTE ]**

The kit is designed for research use only, we will not be responsible for any issue if the kit was used in clinical diagnostic or any other procedures.