

PAB388Mu01

Polyclonal Antibody to Neutrophil gelatinase-associated lipocalin (NGAL)

Organism Species: *Mus musculus* (Mouse)

Instruction manual

FOR RESEARCH USE ONLY

NOT FOR USE IN CLINICAL DIAGNOSTIC PROCEDURES

13th Edition (Revised in Aug, 2023)

[**PROPERTIES**]

Source: Polyclonal antibody preparation

Host: Rabbit

Purification: Antigen-specific affinity chromatography followed by Protein A affinity chromatography

Traits: Liquid

Concentration: 0.5mg/mL

UOM: 100µL

Cross Reactivity: Porcine

Applications: WB; IHC

[**IMMUNOGEN**]

Immunogen: Recombinant NGAL (Gln21~Asn200) expressed in *E.coli*

Accession No.: RPB388Mu01

[**APPLICATIONS**]

Western blotting: 0.01-2µg/mL;

Immunohistochemistry: 5-20µg/mL;

Optimal working dilutions must be determined by end user.

[**FORMULATION**]

Form & Buffer: Supplied as solution form in PBS, pH7.4, containing 0.02% NaN₃, 50% glycerol.

[**STORAGE AND STABILITY**]

Storage: Avoid repeated freeze/thaw cycles.

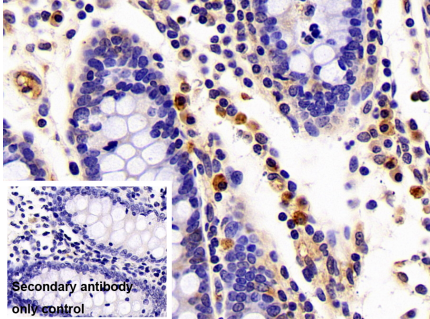
Store at 4°C for frequent use.

Aliquot and store at -20°C for 24 months.

Stability Test: The thermal stability is described by the loss rate. The loss rate was determined by accelerated thermal degradation test, that is, incubate the protein at 37°C for 48h, and no obvious degradation and precipitation were observed. The loss rate is less than 5% within the

expiration date under appropriate storage condition.

[IDENTIFICATION]



DAB staining on IHC-P; Sample:

Porcine Colon Tissue Primary Ab:

10µg/ml Rabbit Anti-Mouse LCN2

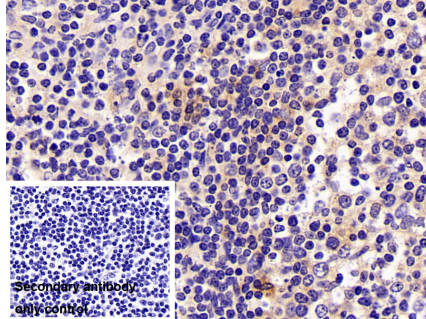
Antibody Control: Used PBS instead of

primary antibody Second Ab: 2?g/ml

HRP-Linked Caprine Anti-Rabbit IgG

Polyclonal Antibody (Catalog:

SAA544Rb19)



DAB staining on IHC-P;

Sample: Porcine Lymph node Tissue

Primary Ab: 10µg/ml Rabbit Anti-Mouse

LCN2 Antibody

Control: Used PBS instead of primary

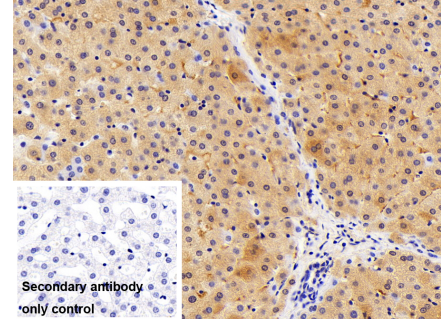
antibody

Second Ab: 2?g/ml HRP-Linked

Caprine Anti-Rabbit IgG Polyclonal

Antibody

(Catalog: SAA544Rb19)



DAB staining on IHC-P;

Sample: Porcine Liver Tissue

Primary Ab: 10µg/ml Rabbit Anti-Mouse

LCN2 Antibody

Control: Used PBS instead of primary

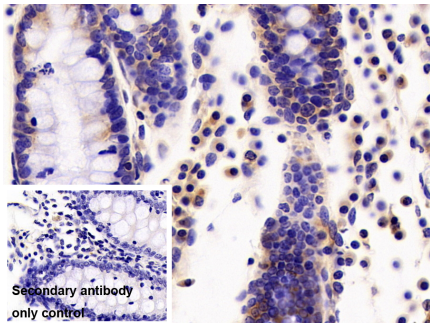
antibody

Second Ab: 2?g/ml HRP-Linked

Caprine Anti-Rabbit IgG Polyclonal

Antibody

(Catalog: SAA544Rb19)



DAB staining on IHC-P;

Sample: Porcine Colon Tissue

Primary Ab: 10µg/ml Rabbit Anti-Mouse

LCN2 Antibody

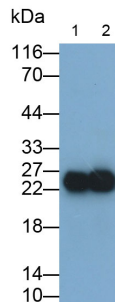
Control: Used PBS instead of primary

antibody

Second Ab: 2?g/ml HRP-Linked

Caprine Anti-Rabbit IgG Polyclonal

Antibody



Western Blot; Samples: Lane1: Mouse

Spleen lysate; Lane2: Mouse Lung

lysate;

Primary Ab: 0.1µg/ml Rabbit Anti-

Mouse LCN2 Antibody

Second Ab: 0.2?g/ml HRP-Linked

Caprine Anti-Rabbit IgG Polyclonal

Antibody

(Catalog: SAA544Rb19)

(Catalog: SAA544Rb19)

[IMPORTANT NOTE]

The kit is designed for research use only, we will not be responsible for any issue if the kit was used in clinical diagnostic or any other procedures.