

**PAB824Hu01**

**Polyclonal Antibody to Nuclear Factor Kappa B (NFkB)**

**Organism Species: *Homo sapiens (Human)***

***Instruction manual***

FOR RESEARCH USE ONLY

NOT FOR USE IN CLINICAL DIAGNOSTIC PROCEDURES

---

13th Edition (Revised in Aug, 2023)

### [ **PROPERTIES** ]

**Source:** Polyclonal antibody preparation

**Host:** Rabbit

**Purification:** Antigen-specific affinity chromatography followed by Protein A affinity chromatography

**Traits:** Liquid

**Concentration:** 0.5mg/mL

**UOM:** 100µg(200µL)

**Cross Reactivity:** Mouse;Rat;Porcine;Bovine

**Applications:** WB; IHC; ICC/IF

### [ **IMMUNOGEN** ]

**Immunogen:** Recombinant NFκB (Pro42~Met367) expressed in *E.coli*

**Accession No.:** RPB824Hu01

### [ **APPLICATIONS** ]

Western blotting: 0.01-2µg/mL;

Immunohistochemistry: 5-20µg/mL;

Immunofluorescence: 5-20µg/mL;

Optimal working dilutions must be determined by end user.

### [ **FORMULATION** ]

**Form & Buffer:** Supplied as solution form in 0.01M PBS, pH7.4, containing 0.05% Proclin-300, 50% glycerol.

### [ **STORAGE AND STABILITY** ]

**Storage:** Avoid repeated freeze/thaw cycles.

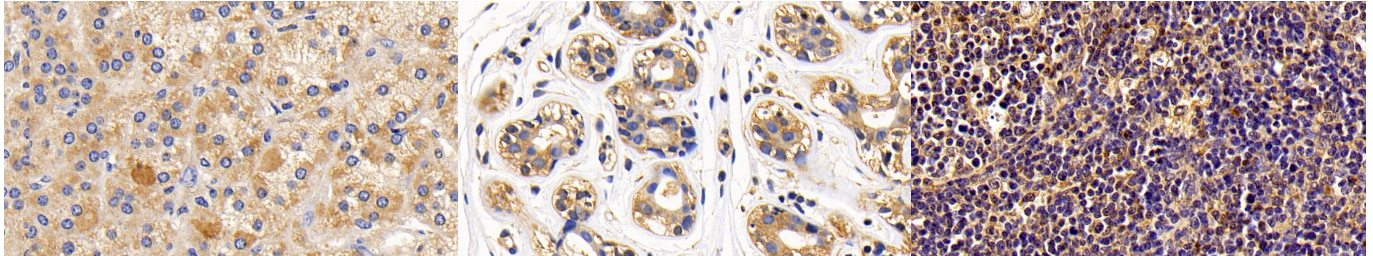
Store at 4°C for frequent use.

Aliquot and store at -20°C for 24 months.

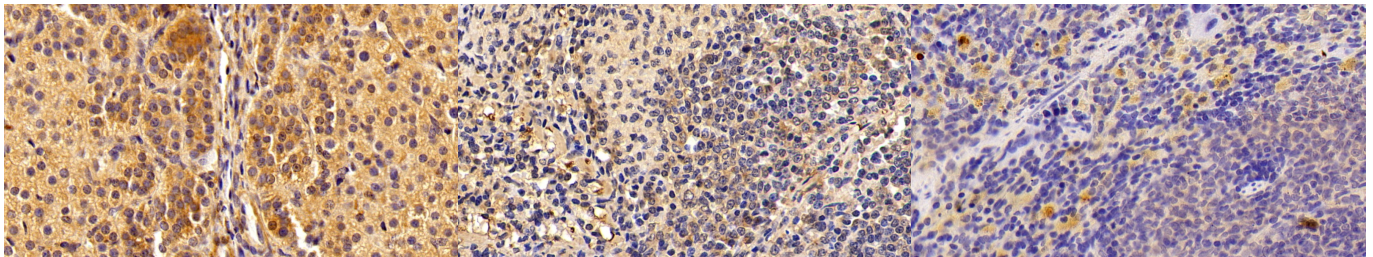
**Stability Test:** The thermal stability is described by the loss rate. The loss rate was determined by accelerated thermal degradation test, that is, incubate the protein at 37°C for 48h, and no

obvious degradation and precipitation were observed. The loss rate is less than 5% within the expiration date under appropriate storage condition.

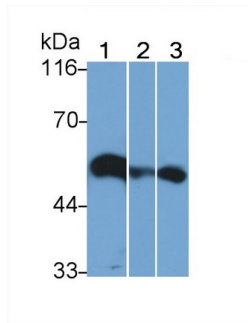
**[ IDENTIFICATION ]**



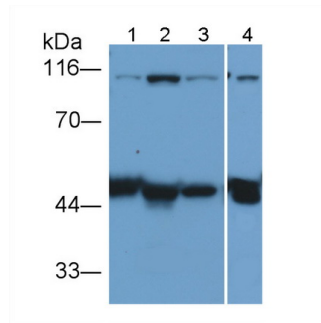
<p>DAB staining on IHC-P; Sample: Human Adrenal gland Tissue; Primary Ab: 20ug/ml Rabbit Anti-Human NFkB Antibody Second Ab: 2µg/mL HRP-Linked Caprine Anti-Rabbit IgG Polyclonal Antibody (Catalog: SAA544Rb19)</p>	<p>DAB staining on IHC-P; Sample: Human Breast cancer Tissue; Primary Ab: 20ug/ml Rabbit Anti-Human NFkB Antibody Second Ab: 2µg/mL HRP-Linked Caprine Anti-Rabbit IgG Polyclonal Antibody (Catalog: SAA544Rb19)</p>	<p>DAB staining on IHC-P; Samples: Porcine Lymph node Tissue; Primary Ab: 20?g/ml Rabbit Anti-Human NFkB Antibody Second Ab: 2µg/mL HRP-Linked Caprine Anti-Rabbit IgG Polyclonal Antibody (Catalog: SAA544Rb19)</p>
--	--	--



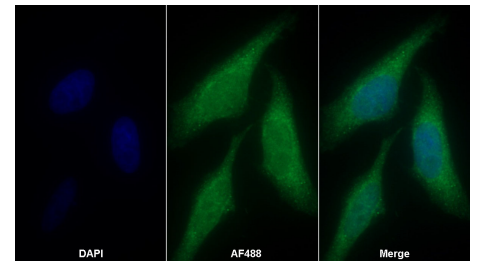
<p>DAB staining on IHC-P; Samples: Porcine Adrenal gland Tissue; Primary Ab: 20?g/ml Rabbit Anti-Human NFkB Antibody Second Ab: 2µg/mL HRP-Linked Caprine Anti-Rabbit IgG Polyclonal Antibody (Catalog: SAA544Rb19)</p>	<p>DAB staining on IHC-P; Sample: Porcine Spleen Tissue; Primary Ab: 20ug/ml Rabbit Anti-Human NFkB Antibody Second Ab: 2µg/mL HRP-Linked Caprine Anti-Rabbit IgG Polyclonal Antibody (Catalog: SAA544Rb19)</p>	<p>DAB staining on IHC-P; Sample: Rat Spleen Tissue; Primary Ab: 20?g/ml Rabbit Anti-Human NFkB Antibody Second Ab: 2µg/mL HRP-Linked Caprine Anti-Rabbit IgG Polyclonal Antibody (Catalog: SAA544Rb19)</p>
---	---	---



Western Blot; Sample: Lane1: Mouse Lung lysate; Lane2: Mouse Spleen lysate; Lane3: Bovine Spleen lysate  
 Primary Ab: 0.5ug/ml Rabbit Anti-Human NFkB Antibody  
 Second Ab: 0.2µg/mL HRP-Linked Caprine Anti-Rabbit IgG Polyclonal Antibody  
 (Catalog: SAA544Rb19)



Western Blot; Sample: Lane1: Human Lung lysate; Lane2: Raji cell lysate; Lane3: MCF7 cell lysate; Lane4: Porcine Spleen lysate  
 Primary Ab: 0.5ug/ml Rabbit Anti-Human NFkB Antibody  
 Second Ab: 0.2µg/mL HRP-Linked Caprine Anti-Rabbit IgG Polyclonal Antibody  
 (Catalog: SAA544Rb19)



AF488 staining on IF;  
 Sample: HepG2 cell  
 Primary Ab: 20µg/ml Rabbit Anti-Human NFkB Antibody  
 Second Ab: 2µg/ml AF488-Linked Caprine Anti-Rabbit IgG Polyclonal Antibody  
 (Catalog: SAA544Rb11)

**[ IMPORTANT NOTE ]**

The kit is designed for research use only, we will not be responsible for any issue if the kit was used in clinical diagnostic or any other procedures.