

PAB824Mu01

Polyclonal Antibody to Nuclear Factor Kappa B (NFkB)

Organism Species: *Mus musculus* (Mouse)

Instruction manual

FOR RESEARCH USE ONLY

NOT FOR USE IN CLINICAL DIAGNOSTIC PROCEDURES

13th Edition (Revised in Aug, 2023)

[PROPERTIES]

Source: Polyclonal antibody preparation

Host: Rabbit

Purification: Antigen-specific affinity chromatography followed by Protein A affinity chromatography

Traits: Liquid

Concentration: 0.5mg/mL

UOM: 100µL

Cross Reactivity: Human;Porcine

Applications: WB; ICC/IF

[IMMUNOGEN]

Immunogen: Recombinant NFκB (Pro40~Met365) expressed in *E.coli*

Accession No.: RPB824Mu01

[APPLICATIONS]

Western blotting: 0.01-5µg/mL;

Immunofluorescence: 5-20µg/mL;

Optimal working dilutions must be determined by end user.

[FORMULATION]

Form & Buffer: Supplied as solution form in 0.01M PBS, pH7.4, containing 0.05% Proclin-300, 50% glycerol.

[STORAGE AND STABILITY]

Storage: Avoid repeated freeze/thaw cycles.

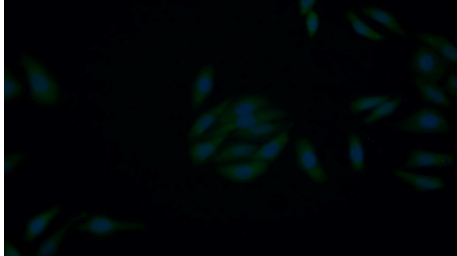
Store at 4°C for frequent use.

Aliquot and store at -20°C for 24 months.

Stability Test: The thermal stability is described by the loss rate. The loss rate was determined by accelerated thermal degradation test, that is, incubate the protein at 37°C for 48h, and no obvious degradation and precipitation were observed. The loss rate is less than 5% within the

expiration date under appropriate storage condition.

[IDENTIFICATION]



FITC staining on IF; Samples: Human HepG2 cell; Primary Ab: 20µg/ml Rabbit Anti-Mouse NFκB Antibody Second Ab: 1.5µg/ml FITC-Linked Caprine Anti-Rabbit IgG Polyclonal Antibody (Catalog: SAA544Rb18)

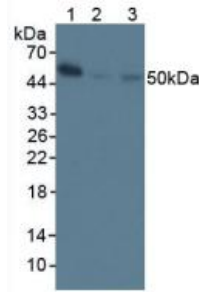
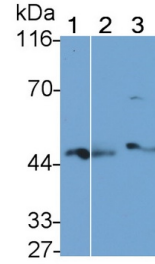
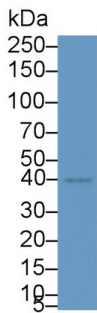


Figure. Western Blot; Sample: Lane1: Mouse Spleen Tissue; Lane2: Mouse Stomach Tissue; Lane3: Human Raji Cells.



Western Blot; Sample: Lane1: Mouse Lung lysate; Lane2: Porcine Spleen lysate; Lane3: Raji cell lysate Primary Ab: 1.5µg/ml Rabbit Anti-Mouse NFκB Antibody Second Ab: 0.2µg/mL HRP-Linked Caprine Anti-Rabbit IgG Polyclonal Antibody (Catalog: SAA544Rb19)



Western Blot; Sample: MCF7 cell lysate Primary Ab: 5µg/ml Rabbit Anti-Mouse NFκB Antibody Second Ab: 0.2µg/mL HRP-Linked Caprine Anti-Rabbit IgG Polyclonal Antibody (Catalog: SAA544Rb19)

[IMPORTANT NOTE]

The kit is designed for research use only, we will not be responsible for any issue if the kit was used in clinical diagnostic or any other procedures.