

PAC332Hu01

Polyclonal Antibody to Nuclear Mitotic Apparatus Protein 1 (NUMA1)

Organism Species: *Homo sapiens (Human)*

Instruction manual

FOR RESEARCH USE ONLY

NOT FOR USE IN CLINICAL DIAGNOSTIC PROCEDURES

13th Edition (Revised in Aug, 2023)

[PROPERTIES]

Source: Polyclonal antibody preparation

Host: Rabbit

Purification: Antigen-specific affinity chromatography followed by Protein A affinity chromatography

Traits: Liquid

Concentration: 0.5mg/mL

UOM: 1mL

Cross Reactivity: Porcine

Applications: WB; IHC; ICC/IF

[IMMUNOGEN]

Immunogen: Recombinant NUMA1 (Phe1700~His2115) expressed in *E.coli*

Accession No.: RPC332Hu01

[APPLICATIONS]

Western blotting: 0.01-3µg/mL;

Immunohistochemistry: 5-30µg/mL;

Immunofluorescence: 5-30µg/mL;

Optimal working dilutions must be determined by end user.

[FORMULATION]

Form & Buffer: Supplied as solution form in 0.01M PBS, pH7.4, containing 0.05% Proclin-300, 50% glycerol.

[STORAGE AND STABILITY]

Storage: Avoid repeated freeze/thaw cycles.

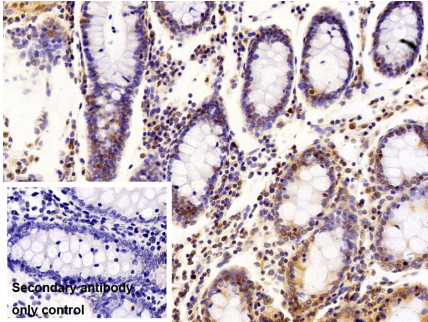
Store at 4°C for frequent use.

Aliquot and store at -20°C for 24 months.

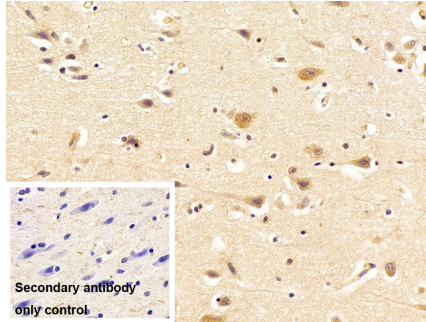
Stability Test: The thermal stability is described by the loss rate. The loss rate was determined by accelerated thermal degradation test, that is, incubate the protein at 37°C for 48h, and no

obvious degradation and precipitation were observed. The loss rate is less than 5% within the expiration date under appropriate storage condition.

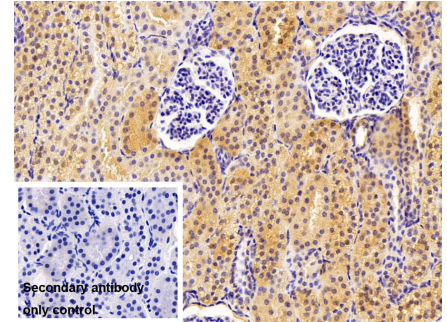
[IDENTIFICATION]



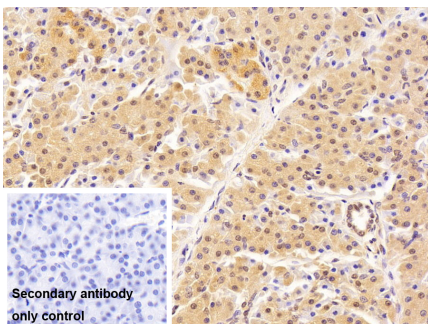
DAB staining on IHC-P; Sample: Porcine Colon Tissue
 Primary Ab: 10µg/ml Rabbit Anti-Human NUMA1
 Antibody Control: Used PBS instead of primary antibody
 Second Ab: 2?g/ml HRP-Linked Caprine Anti-Rabbit IgG Polyclonal Antibody (Catalog: SAA544Rb19)



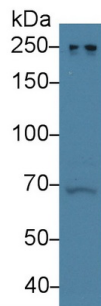
DAB staining on IHC-P; Sample: Porcine Cerebrum Tissue
 Primary Ab: 10µg/ml Rabbit Anti-Human NUMA1 Antibody
 Control: Used PBS instead of primary antibody
 Second Ab: 2?g/ml HRP-Linked Caprine Anti-Rabbit IgG Polyclonal Antibody (Catalog: SAA544Rb19)



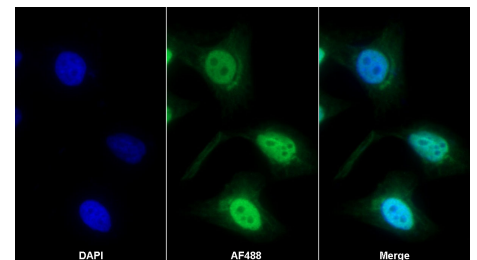
DAB staining on IHC-P; Sample: Porcine Kidney Tissue
 Primary Ab: 10µg/ml Rabbit Anti-Human NUMA1 Antibody
 Control: Used PBS instead of primary antibody
 Second Ab: 2?g/ml HRP-Linked Caprine Anti-Rabbit IgG Polyclonal Antibody (Catalog: SAA544Rb19)



DAB staining on IHC-P; Sample: Porcine Pancreas Tissue
 Primary Ab: 10µg/ml Rabbit Anti-Human NUMA1 Antibody
 Control: Used PBS instead of primary antibody
 Second Ab: 2?g/ml HRP-Linked



Western Blot; Sample: Human A431 cell lysate;
 Primary Ab: 3µg/ml Rabbit Anti-Human NUMA1 Antibody
 Second Ab: 0.2µg/mL HRP-Linked Caprine Anti-Rabbit IgG Polyclonal Antibody



AF488 staining on IF; Sample: HeLa cell
 Primary Ab: 20µg/ml Rabbit Anti-Human NUMA1 Antibody
 Second Ab: 2?g/ml AF488-Linked Caprine Anti-Rabbit IgG Polyclonal Antibody (Catalog: SAA544Rb11)

Caprine Anti-Rabbit IgG Polyclonal

(Catalog: SAA544Rb19)

Antibody

(Catalog: SAA544Rb19)

[IMPORTANT NOTE]

The kit is designed for research use only, we will not be responsible for any issue if the kit was used in clinical diagnostic or any other procedures.