

PAA899Hu02

Polyclonal Antibody to Osteopontin (OPN)

Organism Species: *Homo sapiens (Human)*

Instruction manual

FOR RESEARCH USE ONLY

NOT FOR USE IN CLINICAL DIAGNOSTIC PROCEDURES

13th Edition (Revised in Aug, 2023)

[PROPERTIES]

Source: Polyclonal antibody preparation

Host: Rabbit

Purification: Antigen-specific affinity chromatography followed by Protein A affinity chromatography

Traits: Liquid

Concentration: 0.5mg/mL

UOM: 100µg(200µL)

Cross Reactivity: Porcine

Applications: WB; IHC; FCM

[IMMUNOGEN]

Immunogen: Recombinant OPN (Ile17~Asn287) expressed in *E.coli*

Accession No.: RPA899Hu02

[APPLICATIONS]

Western blotting: 0.01-3?g/mL;

Immunohistochemistry: 5-30?g/mL;

Flow cytometry: 20?g/mL;

Optimal working dilutions must be determined by end user.

[FORMULATION]

Form & Buffer: Supplied as solution form in PBS, pH7.4, containing 0.02% NaN₃, 50% glycerol.

[STORAGE AND STABILITY]

Storage: Avoid repeated freeze/thaw cycles.

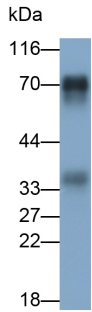
Store at 4°C for frequent use.

Aliquot and store at -20°C for 24 months.

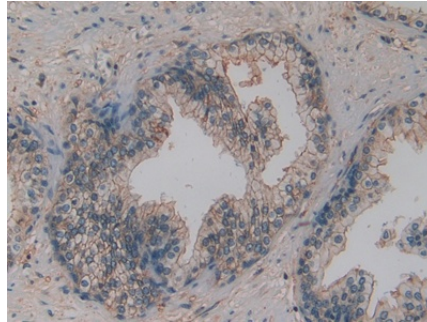
Stability Test: The thermal stability is described by the loss rate. The loss rate was determined by accelerated thermal degradation test, that is, incubate the protein at 37°C for 48h, and no

obvious degradation and precipitation were observed. The loss rate is less than 5% within the expiration date under appropriate storage condition.

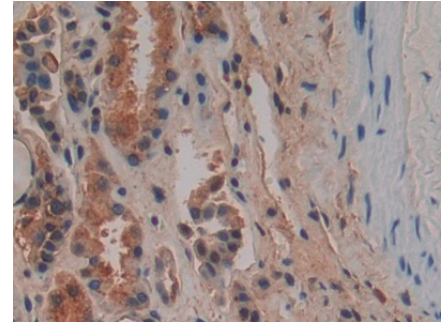
[IDENTIFICATION]



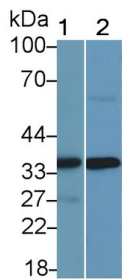
Western Blot; Sample: Human Milk
 Primary Ab: 0.3µg/ml Rabbit Anti-Human OPN Antibody Second Ab: 0.2µg/ml HRP-Linked Caprine Anti-Rabbit IgG Polyclonal Antibody
 (Catalog: SAA544Rb19)



DAB staining on IHC-P; Samples: Human Prostate cancer Tissue;
 Primary Ab: 10µg/ml Rabbit Anti-Human OPN Antibody Second Ab: 2µg/mL HRP-Linked Caprine Anti-Rabbit IgG Polyclonal Antibody
 (Catalog: SAA544Rb19)

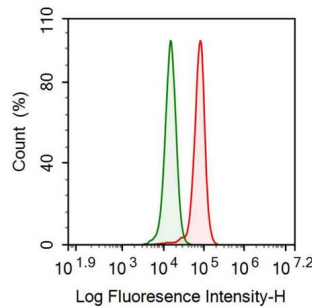


DAB staining on IHC-P; Samples: Human Kidney Tissue;
 Primary Ab: 10µg/ml Rabbit Anti-Human OPN Antibody Second Ab: 2µg/mL HRP-Linked Caprine Anti-Rabbit IgG Polyclonal Antibody
 (Catalog: SAA544Rb19)



Western Blot; Sample: Lane1: Porcine Kidney lysate; Lane2: Human Lung lysate
 Primary Ab: 3?g/ml Rabbit Anti-Human OPN Antibody
 Second Ab: 0.2µg/mL HRP-Linked Caprine Anti-Rabbit IgG Polyclonal Antibody
 (Catalog: SAA544Rb19)

Human HepG2 cell was fixed with 2% paraformaldehyde (10 min) , permeabilised with 0.1% BSA-Triton X-100,then stained with 20µg/ml rabbit Anti-human OPN Polyclonal Antibody (Catalog PAA899Hu02, red histogram) or Isotype control antibody (Catalog IS067-Rb01, green histogram), followed by 1µg/ml FITC-conjugated Anti-rabbit



IgG Secondary Antibody (Catalog
SAA544Rb18).

[IMPORTANT NOTE]

The kit is designed for research use only, we will not be responsible for any issue if the kit was used in clinical diagnostic or any other procedures.