

PAL838Hu01

Polyclonal Antibody to Otubain 1 (OTUB1)

Organism Species: *Homo sapiens (Human)*

Instruction manual

FOR RESEARCH USE ONLY

NOT FOR USE IN CLINICAL DIAGNOSTIC PROCEDURES

13th Edition (Revised in Aug, 2023)

[PROPERTIES]

Source: Polyclonal antibody preparation

Host: Rabbit

Purification: Antigen-specific affinity chromatography followed by Protein A affinity chromatography

Traits: Liquid

Concentration: 0.5mg/mL

UOM: 100µL

Cross Reactivity: Mouse;Rat;Porcine

Applications: WB; IHC; ICC/IF; FCM

[IMMUNOGEN]

Immunogen: Recombinant OTUB1 (Met1~Lys271) expressed in *E.coli*

Accession No.: RPL838Hu01

[APPLICATIONS]

Western blotting: 0.01-2µg/mL;

Immunohistochemistry: 5-20µg/mL;

Immunofluorescence: 5-20µg/mL;

Flow cytometry: 20µg/mL;

Optimal working dilutions must be determined by end user.

[FORMULATION]

Form & Buffer: Supplied as solution form in PBS, pH7.4, containing 0.02% NaN₃, 50% glycerol.

[STORAGE AND STABILITY]

Storage: Avoid repeated freeze/thaw cycles.

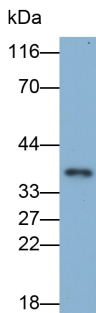
Store at 4°C for frequent use.

Aliquot and store at -20°C for 24 months.

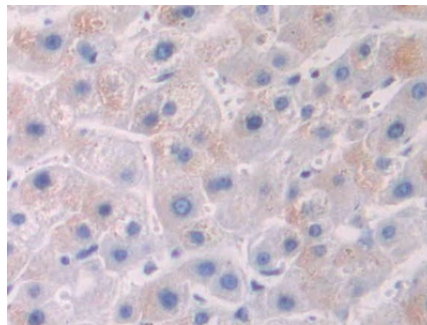
Stability Test: The thermal stability is described by the loss rate. The loss rate was determined

by accelerated thermal degradation test, that is, incubate the protein at 37°C for 48h, and no obvious degradation and precipitation were observed. The loss rate is less than 5% within the expiration date under appropriate storage condition.

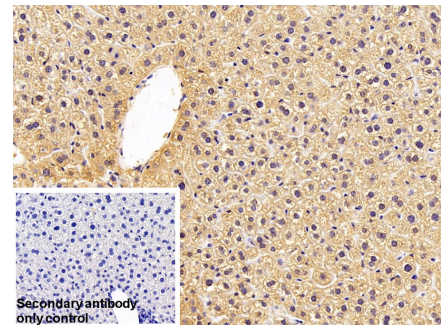
[IDENTIFICATION]



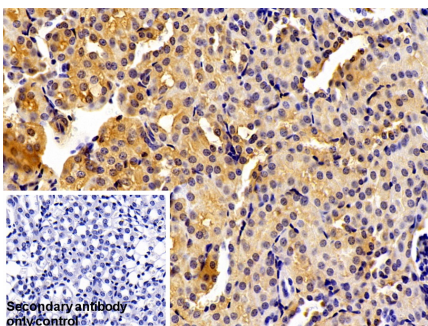
Western Blot; Sample: Mouse Cerebrum lysate Primary Ab: 0.1µg/ml Rabbit Anti-Human OTUB1 Antibody Second Ab: 0.2µg/ml HRP-Linked Caprine Anti-Rabbit IgG Polyclonal Antibody (Catalog: SAA544Rb19)



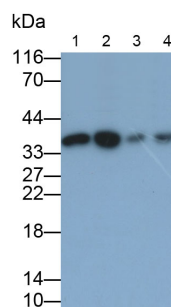
DAB staining on IHC-P; Samples: Human Liver Tissue; Primary Ab: 10µg/ml Rabbit Anti-Human OTUB1 Antibody Second Ab: 2µg/mL HRP-Linked Caprine Anti-Rabbit IgG Polyclonal Antibody (Catalog: SAA544Rb19)



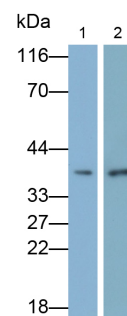
DAB staining on IHC-P; Sample: Mouse Liver Tissue Primary Ab: 10µg/ml Rabbit Anti-Human OTUB1 Antibody Control: Used PBS instead of primary antibody Second Ab: 2µg/ml HRP-Linked Caprine Anti-Rabbit IgG Polyclonal Antibody (Catalog: SAA544Rb19)



DAB staining on IHC-P; Sample: Mouse Kidney Tissue Primary Ab: 10µg/ml Rabbit Anti-Human OTUB1 Antibody Control: Used PBS instead of primary antibody



Western Blot; Samples: Lane1: Mouse Testis lysate; Lane2: Rat Testis lysate; Lane3: Porcine Cerebrum lysate; Lane4: Hela cell lysate; Primary Ab: 0.1µg/ml Rabbit Anti-Human OTUB1 Antibody

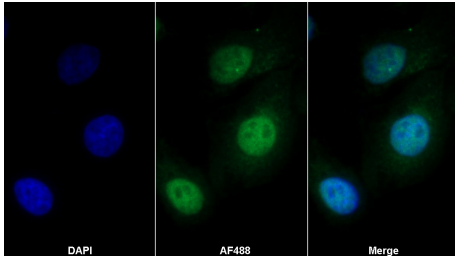


Western Blot; Samples: Lane1: MCF7 cell lysate; Lane2: 293T cell lysate; Primary Ab: 0.1µg/ml Rabbit Anti-Human OTUB1 Antibody Second Ab: 0.2µg/ml HRP-Linked Caprine Anti-Rabbit IgG Polyclonal

Second Ab: 2?g/ml HRP-Linked
 Caprine Anti-Rabbit IgG Polyclonal
 Antibody
 (Catalog: SAA544Rb19)

Second Ab: 0.2?g/ml HRP-Linked
 Caprine Anti-Rabbit IgG Polyclonal
 Antibody
 (Catalog: SAA544Rb19)

Antibody
 (Catalog: SAA544Rb19)

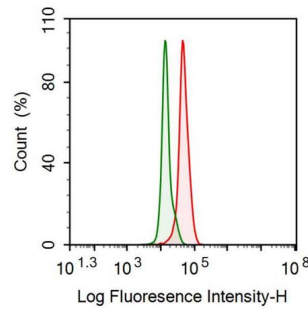


AF488 staining on IF;

Sample: HeLa cell

Primary Ab: 20µg/ml Rabbit Anti-
 Human OTUB1 Antibody

Second Ab: 2?g/ml AF488-Linked
 Caprine Anti-Rabbit IgG Polyclonal
 Antibody
 (Catalog: SAA544Rb11)



Human MCF7 cell was fixed with 2%
 paraformaldehyde (10 min) ,
 permeabilised with 0.1% BSA-Triton
 X-100,then stained with 20µg/ml rabbit
 Anti-human OTUB1 Polyclonal
 Antibody (Catalog PAL838Hu01, red
 histogram) or Isotype control antibody
 (Catalog IS067-Rb01, green
 histogram), followed by 1µg/ml FITC-
 conjugated Anti-rabbit IgG Secondary
 Antibody (Catalog SAA544Rb18).

[IMPORTANT NOTE]

The kit is designed for research use only, we will not be responsible for any issue if the kit was used in clinical diagnostic or any other procedures.