

PAC704Hu01

Polyclonal Antibody to Oxoguanine Glycosylase 1 (OGG1)

Organism Species: *Homo sapiens (Human)*

Instruction manual

FOR RESEARCH USE ONLY

NOT FOR USE IN CLINICAL DIAGNOSTIC PROCEDURES

13th Edition (Revised in Aug, 2023)

[PROPERTIES]

Source: Polyclonal antibody preparation

Host: Rabbit

Purification: Antigen-specific affinity chromatography followed by Protein A affinity chromatography

Traits: Liquid

Concentration: 0.5mg/mL

UOM: 100µL

Cross Reactivity: Mouse;Porcine

Applications: WB; ICC/IF

[IMMUNOGEN]

Immunogen: Recombinant OGG1 (Ser31~Gly345) expressed in *E.coli*

Accession No.: RPC704Hu01

[APPLICATIONS]

Western blotting: 0.01-2µg/mL;

Immunofluorescence: 5-20µg/mL;

Optimal working dilutions must be determined by end user.

[FORMULATION]

Form & Buffer: Supplied as solution form in 0.01M PBS, pH7.4, containing 0.05% Proclin-300, 50% glycerol.

[STORAGE AND STABILITY]

Storage: Avoid repeated freeze/thaw cycles.

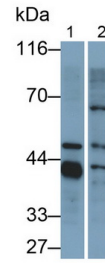
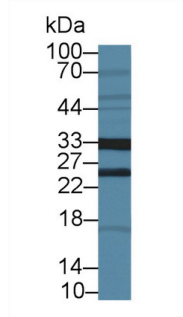
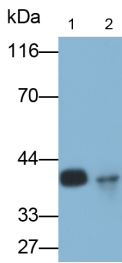
Store at 4°C for frequent use.

Aliquot and store at -20°C for 24 months.

Stability Test: The thermal stability is described by the loss rate. The loss rate was determined by accelerated thermal degradation test, that is, incubate the protein at 37°C for 48h, and no obvious degradation and precipitation were observed. The loss rate is less than 5% within the

expiration date under appropriate storage condition.

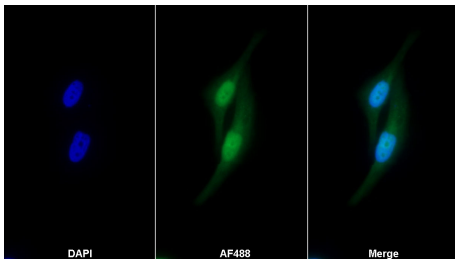
[IDENTIFICATION]



Western Blot; Samples: Lane1: Porcine Kidney lysate; Lane2: Mouse Kidney lysate; Primary Ab: 0.2µg/ml Rabbit Anti-Human OGG1 Antibody Second Ab: 0.2?g/ml HRP-Linked Caprine Anti-Rabbit IgG Polyclonal Antibody (Catalog: SAA544Rb19)

Western Blot; Sample: Porcine Heart lysate; Primary Ab: 2µg/ml Rabbit Anti-Human OGG1 Antibody Second Ab: 0.2µg/mL HRP-Linked Caprine Anti-Rabbit IgG Polyclonal Antibody (Catalog: SAA544Rb19)

Western Blot; Sample: Lane1: Mouse Kidney lysate; Lane2: Hela cell lysate Primary Ab: 0.2µg/ml Rabbit Anti-Human OGG1 Antibody Second Ab: 0.2µg/mL HRP-Linked Caprine Anti-Rabbit IgG Polyclonal Antibody (Catalog: SAA544Rb19)



AF488 staining on IF;

Sample: HepG2 cell

Primary Ab: 20µg/ml Rabbit Anti-Human OGG1 Antibody

Second Ab: 2?g/ml AF488-Linked Caprine Anti-Rabbit IgG Polyclonal Antibody

(Catalog: SAA544Rb11)

[IMPORTANT NOTE]

The kit is designed for research use only, we will not be responsible for any issue if the kit was

used in clinical diagnostic or any other procedures.