

PAM058Hu01

Polyclonal Antibody to PR Domain Containing Protein 1 (PRDM1)

Organism Species: *Homo sapiens (Human)*

Instruction manual

FOR RESEARCH USE ONLY

NOT FOR USE IN CLINICAL DIAGNOSTIC PROCEDURES

13th Edition (Revised in Aug, 2023)

[PROPERTIES]

Source: Polyclonal antibody preparation

Host: Rabbit

Purification: Antigen-specific affinity chromatography followed by Protein A affinity chromatography

Traits: Liquid

Concentration: 0.5mg/mL

UOM: 200µL

Cross Reactivity: Rat

Applications: WB; FCM

[IMMUNOGEN]

Immunogen: Recombinant PRDM1 (Leu29~Asp149) expressed in *E.coli*

Accession No.: RPM058Hu01

[APPLICATIONS]

Western blotting: 0.01-2µg/mL;

For flow cytometry: 0.5-2 µg per 10⁶ cells in 100 µL volume;

Optimal working dilutions must be determined by end user.

[FORMULATION]

Form & Buffer: Supplied as solution form in PBS, pH7.4, containing 0.02% NaN₃, 50% glycerol.

[STORAGE AND STABILITY]

Storage: Avoid repeated freeze/thaw cycles.

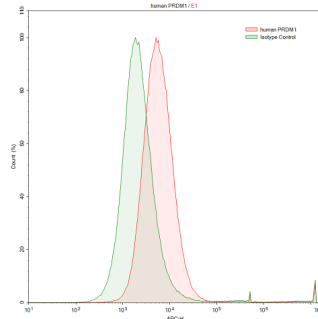
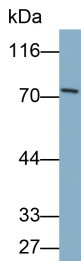
Store at 4°C for frequent use.

Aliquot and store at -20°C for 24 months.

Stability Test: The thermal stability is described by the loss rate. The loss rate was determined by accelerated thermal degradation test, that is, incubate the protein at 37°C for 48h, and no obvious degradation and precipitation were observed. The loss rate is less than 5% within the

expiration date under appropriate storage condition.

[IDENTIFICATION]



<p>Western Blot; Sample: Raji cell lysate</p> <p>Primary Ab: 0.5µg/ml Rabbit Anti-Human PRDM1 Antibody</p> <p>Second Ab: 0.2?g/ml HRP-Linked Caprine Anti-Rabbit IgG Polyclonal Antibody (Catalog: SAA544Rb19)</p>	<p>Raji human Burkitt's lymphoma cell line was stained with rabbit Anti-human PRDM1 Polyclonal Antibody (Catalog # PAM058Hu01, filled red histogram) or Isotype control antibody (Catalog # IS067-Rb01, filled green histogram), followed by APC-conjugated Anti-rabbit IgG Secondary Antibody (Catalog # SAA544Rb15). Cells were fixed with 4% paraformaldehyde and permeabilized with 0.1% Triton X-100.</p>
--	--

[IMPORTANT NOTE]

The kit is designed for research use only, we will not be responsible for any issue if the kit was used in clinical diagnostic or any other procedures.