

PAL059Hu01

Polyclonal Antibody to Parkinson Disease Protein 7 (PARK7)

Organism Species: *Homo sapiens (Human)*

Instruction manual

FOR RESEARCH USE ONLY

NOT FOR USE IN CLINICAL DIAGNOSTIC PROCEDURES

13th Edition (Revised in Aug, 2023)

[PROPERTIES]

Source: Polyclonal antibody preparation

Host: Rabbit

Purification: Antigen-specific affinity chromatography followed by Protein A affinity chromatography

Traits: Liquid

Concentration: 0.5mg/mL

UOM: 100µL

Cross Reactivity: Mouse;Rat

Applications: WB; IHC; ICC/IF

[IMMUNOGEN]

Immunogen: Recombinant PARK7 (Met1~Asp189) expressed in *E.coli*

Accession No.: RPL059Hu01

[APPLICATIONS]

Western blotting: 0.01-2µg/mL;

Immunohistochemistry: 5-20µg/mL;

Immunofluorescence: 5-20µg/mL;

Optimal working dilutions must be determined by end user.

[FORMULATION]

Form & Buffer: Supplied as solution form in 0.01M PBS, pH7.4, containing 0.05% Proclin-300, 50% glycerol.

[STORAGE AND STABILITY]

Storage: Avoid repeated freeze/thaw cycles.

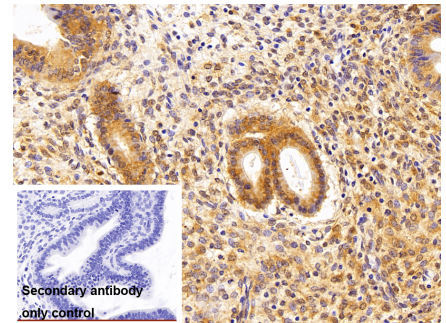
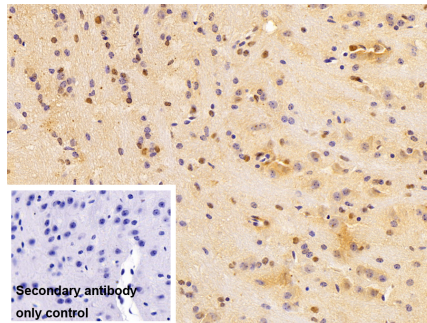
Store at 4°C for frequent use.

Aliquot and store at -20°C for 24 months.

Stability Test: The thermal stability is described by the loss rate. The loss rate was determined by accelerated thermal degradation test, that is, incubate the protein at 37°C for 48h, and no

obvious degradation and precipitation were observed. The loss rate is less than 5% within the expiration date under appropriate storage condition.

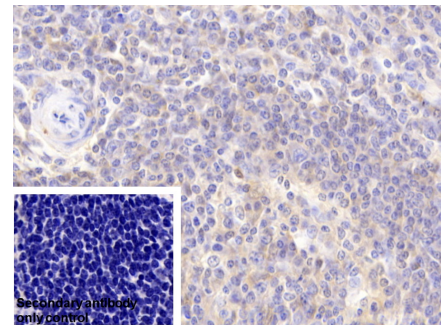
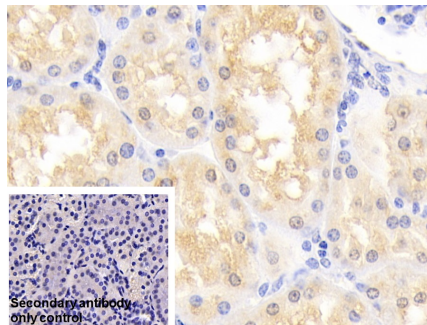
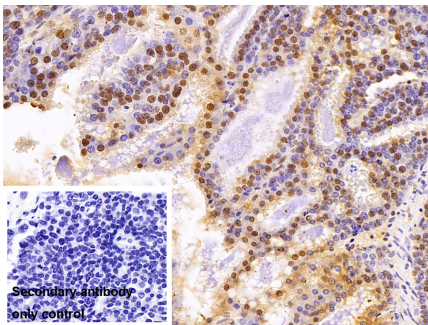
[IDENTIFICATION]



Western Blot; Sample: Mouse Liver lysate Primary Ab: 0.3µg/ml Rabbit Anti-Human PARK7 Antibody Second Ab: 0.2µg/ml HRP-Linked Caprine Anti-Rabbit IgG Polyclonal Antibody (Catalog: SAA544Rb19)

DAB staining on IHC-P; Sample: Mouse Cerebrum Tissue Primary Ab: 10µg/ml Rabbit Anti-Human PARK7 Antibody Control: Used PBS instead of primary antibody Second Ab: 2?g/ml HRP-Linked Caprine Anti-Rabbit IgG Polyclonal Antibody (Catalog: SAA544Rb19)

DAB staining on IHC-P; Sample: Mouse Uterus Tissue Primary Ab: 10µg/ml Rabbit Anti-Human PARK7 Antibody Control: Used PBS instead of primary antibody Second Ab: 2?g/ml HRP-Linked Caprine Anti-Rabbit IgG Polyclonal Antibody (Catalog: SAA544Rb19)

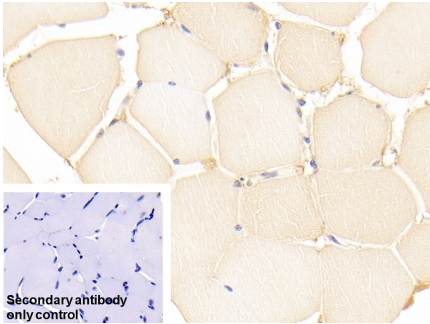


DAB staining on IHC-P; Sample: Mouse Subcutaneous tumor Tissue Primary Ab: 10µg/ml Rabbit Anti-Human PARK7 Antibody Control: Used PBS instead of primary antibody

DAB staining on IHC-P; Sample: Human Kidney Tissue Primary Ab: 20µg/ml Rabbit Anti-Human PARK7 Antibody Control: Used PBS instead of primary antibody Second Ab: 2µg/ml HRP-Linked

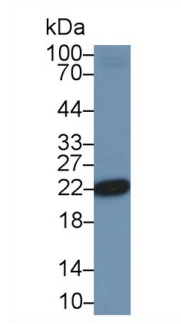
DAB staining on IHC-P; Sample: Human Spleen Tissue Primary Ab: 20µg/ml Rabbit Anti-Human PARK7 Antibody Control: Used PBS instead of primary antibody Second Ab: 2µg/ml HRP-Linked

Second Ab: 2?g/ml HRP-Linked
Caprine Anti-Rabbit IgG Polyclonal
Antibody
(Catalog: SAA544Rb19)



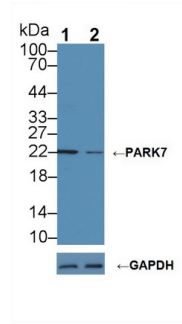
DAB staining on IHC-P;
Sample: Human Skeletal muscle Tissue
Primary Ab: 20µg/ml Rabbit Anti-
Human PARK7 Antibody
Control: Used PBS instead of primary
antibody
Second Ab: 2µg/ml HRP-Linked
Caprine Anti-Rabbit IgG Polyclonal
Antibody
(Catalog: SAA544Rb19)

Caprine Anti-Rabbit IgG Polyclonal
Antibody
(Catalog: SAA544Rb19)

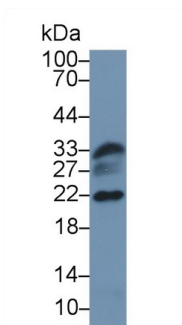


Western Blot; Sample: Human Jurkat
cell lysate;
Primary Ab: 2µg/ml Rabbit Anti-Human
PARK7 Antibody
Second Ab: 0.2µg/mL HRP-Linked
Caprine Anti-Rabbit IgG Polyclonal
Antibody
(Catalog: SAA544Rb19)

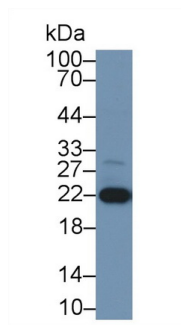
Caprine Anti-Rabbit IgG Polyclonal
Antibody
(Catalog: SAA544Rb19)



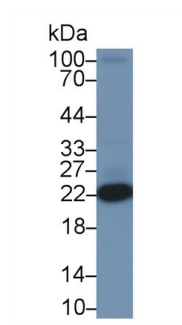
Knockout Varification:
Lane 1: Wild-type Jurkat cell lysate;
Lane 2: PARK7 knockout Jurkat cell
lysate;
Predicted MW: 20kd
Observed MW: 22kd
Primary Ab: 2µg/ml Rabbit Anti-Human
PARK7 Antibody
Second Ab: 0.2µg/mL HRP-Linked
Caprine Anti-Rabbit IgG Polyclonal
Antibody
(Catalog: SAA544Rb19)



Western Blot; Sample: Human Liver
lysate;
Primary Ab: 2µg/ml Rabbit Anti-Human
PARK7 Antibody
Second Ab: 0.2µg/mL HRP-Linked

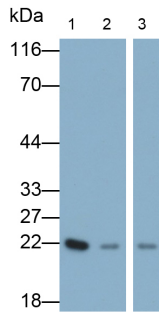


Western Blot; Sample: Rat Liver lysate;
Primary Ab: 2µg/ml Rabbit Anti-Human
PARK7 Antibody
Second Ab: 0.2µg/mL HRP-Linked
Caprine Anti-Rabbit IgG Polyclonal



Western Blot; Sample: Rat Heart lysate;
Primary Ab: 2µg/ml Rabbit Anti-Human
PARK7 Antibody
Second Ab: 0.2µg/mL HRP-Linked
Caprine Anti-Rabbit IgG Polyclonal

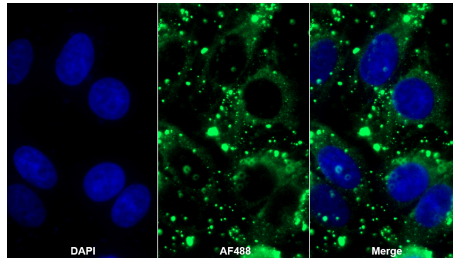
Caprine Anti-Rabbit IgG Polyclonal
Antibody
(Catalog: SAA544Rb19)



Western Blot; Samples: Lane1: HeLa cell lysate; Lane2: 293T cell lysate; Lane3: Mouse Kidney lysate;
Primary Ab: 0.3µg/ml Rabbit Anti-Human PARK7 Antibody
Second Ab: 0.2µg/ml HRP-Linked Caprine Anti-Rabbit IgG Polyclonal Antibody
(Catalog: SAA544Rb19)

Antibody
(Catalog: SAA544Rb19)

Antibody
(Catalog: SAA544Rb19)



AF488 staining on IF;

Sample: HeLa cell
Primary Ab: 20µg/ml Rabbit Anti-Human PARK7 Antibody
Second Ab: 2µg/ml AF488-Linked Caprine Anti-Rabbit IgG Polyclonal Antibody
(Catalog: SAA544Rb11)

[**IMPORTANT NOTE**]

The kit is designed for research use only, we will not be responsible for any issue if the kit was used in clinical diagnostic or any other procedures.