

PAF822Hu01

Polyclonal Antibody to Phosphatase And Tensin Homolog (PTEN)

Organism Species: *Homo sapiens (Human)*

Instruction manual

FOR RESEARCH USE ONLY

NOT FOR USE IN CLINICAL DIAGNOSTIC PROCEDURES

13th Edition (Revised in Aug, 2023)

[PROPERTIES]

Source: Polyclonal antibody preparation

Host: Rabbit

Purification: Antigen-specific affinity chromatography followed by Protein A affinity chromatography

Traits: Liquid

Concentration: 0.5mg/mL

UOM: 100µL

Cross Reactivity: Rat;Cavia;Canine;Porcine;Bovine;Caprine;Equine;Gallus

Applications: WB; IHC; FCM

[IMMUNOGEN]

Immunogen: Recombinant PTEN (Thr2~Val403) expressed in *E.coli*

Accession No.: RPF822Hu01

[APPLICATIONS]

Western blotting: 0.01-2µg/mL;

Immunohistochemistry: 5-20µg/mL;

Flow cytometry: 20?g/mL;

Optimal working dilutions must be determined by end user.

[FORMULATION]

Form & Buffer: Supplied as solution form in PBS, pH7.4, containing 0.02% NaN₃, 50% glycerol.

[STORAGE AND STABILITY]

Storage: Avoid repeated freeze/thaw cycles.

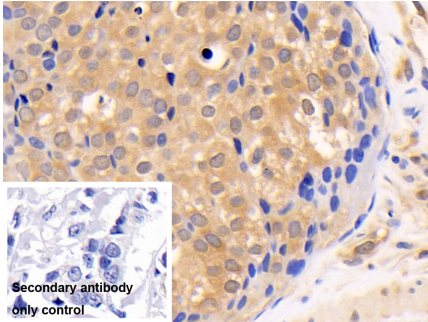
Store at 4°C for frequent use.

Aliquot and store at -20°C for 24 months.

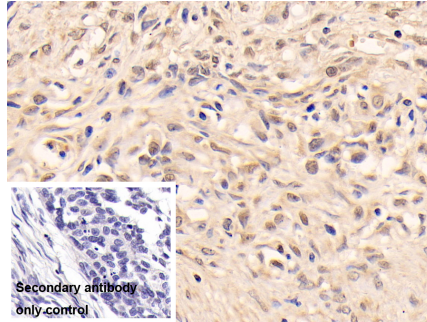
Stability Test: The thermal stability is described by the loss rate. The loss rate was determined by accelerated thermal degradation test, that is, incubate the protein at 37°C for 48h, and no

obvious degradation and precipitation were observed. The loss rate is less than 5% within the expiration date under appropriate storage condition.

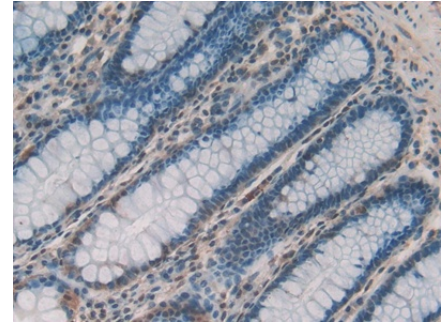
[IDENTIFICATION]



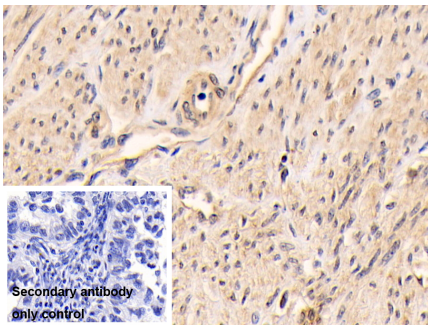
DAB staining on IHC-P; Sample: Human Breast cancer Tissue Primary Ab: 20µg/ml Rabbit Anti-Human PTEN Antibody Control: Used PBS instead of primary antibody Second Ab: 2µg/ml HRP-Linked Caprine Anti-Rabbit IgG Polyclonal Antibody (Catalog: SAA544Rb19)



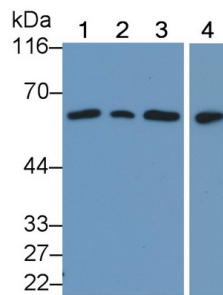
DAB staining on IHC-P; Sample: Human Ovarian cancer Tissue Primary Ab: 20µg/ml Rabbit Anti-Human PTEN Antibody Control: Used PBS instead of primary antibody Second Ab: 2µg/ml HRP-Linked Caprine Anti-Rabbit IgG Polyclonal Antibody (Catalog: SAA544Rb19)



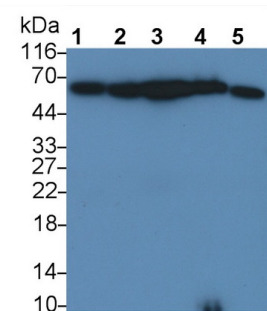
DAB staining on IHC-P; Samples: Human Rectum Tissue; Primary Ab: 20µg/ml Rabbit Anti-Human PTEN Antibody Second Ab: 2µg/mL HRP-Linked Caprine Anti-Rabbit IgG Polyclonal Antibody (Catalog: SAA544Rb19)



DAB staining on IHC-P; Sample: Human Endometrial cancer Tissue Primary Ab: 20µg/ml Rabbit Anti-Human PTEN Antibody Control: Used PBS instead of primary antibody



Western Blot; Sample: Lane1: Porcine Cerebrum lysate; Lane2: Rat Cerebrum lysate; Lane3: Bovine Cerebrum lysate; Lane4: Hela cell lysate Primary Ab: 0.2µg/ml Rabbit Anti-Human PTEN Antibody Second Ab: 0.2µg/mL HRP-Linked

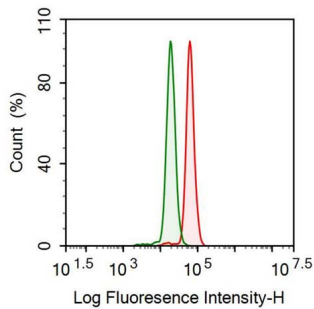


Western Blot; Sample: Lane1: Canine Cerebrum lysate; Lane2: Gallus Cerebrum lysate; Lane3: Caprine Cerebrum lysate; Lane4: Cavia Cerebrum lysate; Lane5: Equine Spleen lysate Primary Ab: 0.2µg/ml Rabbit Anti-

Second Ab: 2?g/ml HRP-Linked
Caprine Anti-Rabbit IgG Polyclonal
Antibody
(Catalog: SAA544Rb19)

Caprine Anti-Rabbit IgG Polyclonal
Antibody
(Catalog: SAA544Rb19)

Human PTEN Antibody
Second Ab: 0.2µg/mL HRP-Linked
Caprine Anti-Rabbit IgG Polyclonal
Antibody
(Catalog: SAA544Rb19)



Human THP1 cell was fixed with 2% paraformaldehyde (10 min) , permeabilised with 0.1% BSA-Triton X-100,then stained with 20µg/ml rabbit Anti-human PTEN Polyclonal Antibody (Catalog PAF822Hu01, red histogram) or Isotype control antibody (Catalog IS067-Rb01, green histogram), followed by 1µg/ml FITC-conjugated Anti-rabbit IgG Secondary Antibody (Catalog SAA544Rb18).

[IMPORTANT NOTE]

The kit is designed for research use only, we will not be responsible for any issue if the kit was used in clinical diagnostic or any other procedures.