

PAA726Ga01

Polyclonal Antibody to Prealbumin (PALB)

Organism Species: *Chicken (Gallus)*

Instruction manual

FOR RESEARCH USE ONLY

NOT FOR USE IN CLINICAL DIAGNOSTIC PROCEDURES

13th Edition (Revised in Aug, 2023)

[PROPERTIES]

Source: Polyclonal antibody preparation

Host: Rabbit

Purification: Antigen-specific affinity chromatography followed by Protein A affinity chromatography

Traits: Liquid

Concentration: 0.5mg/mL

UOM: 100µL

Cross Reactivity: Human;Rat;Porcine

Applications: WB

[IMMUNOGEN]

Immunogen: Recombinant PALB (Ala21~Glu150 (Accession # P27731)) expressed in *E.coli*

Accession No.: RPA726Ga01

[APPLICATIONS]

Western blotting: 0.01-2µg/mL;

Optimal working dilutions must be determined by end user.

[FORMULATION]

Form & Buffer: Supplied as solution form in PBS, pH7.4, containing 0.02% NaN₃, 50% glycerol.

[STORAGE AND STABILITY]

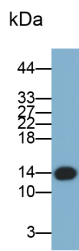
Storage: Avoid repeated freeze/thaw cycles.

Store at 4°C for frequent use.

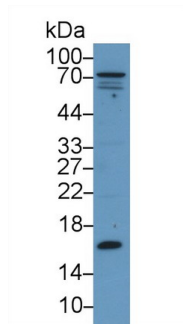
Aliquot and store at -20°C for 24 months.

Stability Test: The thermal stability is described by the loss rate. The loss rate was determined by accelerated thermal degradation test, that is, incubate the protein at 37°C for 48h, and no obvious degradation and precipitation were observed. The loss rate is less than 5% within the expiration date under appropriate storage condition.

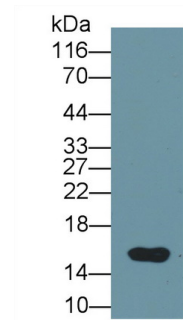
[IDENTIFICATION]



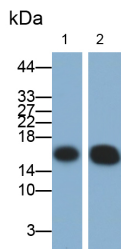
Western Blot; Sample: Porcine Serum
 Primary Ab: 0.1µg/ml Rabbit Anti-Gallus
 PALB Antibody Second Ab: 0.2µg/ml
 HRP-Linked Caprine Anti-Rabbit IgG
 Polyclonal Antibody (Catalog:
 SAA544Rb19)



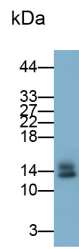
Western Blot; Sample: Human 293T
 cell lysate;
 Primary Ab: 1µg/ml Rabbit Anti-Gallus
 TTR Antibody
 Second Ab: 0.2µg/mL HRP-Linked
 Caprine Anti-Rabbit IgG Polyclonal
 Antibody
 (Catalog: SAA544Rb19)



Western Blot; Sample: Gallus Serum
 Primary Ab: 0.1µg/ml Rabbit Anti-Gallus
 PALB Antibody
 Second Ab: 0.2µg/mL HRP-Linked
 Caprine Anti-Rabbit IgG Polyclonal
 Antibody
 (Catalog: SAA544Rb19)



Western Blot; Samples: Lane1: Gallus
 egg yolk; Lane2: Gallus Serum;
 Primary Ab: 0.1µg/ml Rabbit Anti-Gallus
 PALB Antibody
 Second Ab: 0.2µg/ml HRP-Linked
 Caprine Anti-Rabbit IgG Polyclonal
 Antibody
 (Catalog: SAA544Rb19)



Western Blot; Sample: Rat Serum
 Primary Ab: 0.1µg/ml Rabbit Anti-Gallus
 PALB Antibody
 Second Ab: 0.2µg/ml HRP-Linked
 Caprine Anti-Rabbit IgG Polyclonal
 Antibody
 (Catalog: SAA544Rb19)

[IMPORTANT NOTE]

The kit is designed for research use only, we will not be responsible for any issue if the kit was

used in clinical diagnostic or any other procedures.