

PAH323Hu01

Polyclonal Antibody to Preferentially Expressed Antigen In Melanoma (PRAME)

Organism Species: *Homo sapiens (Human)*

Instruction manual

FOR RESEARCH USE ONLY

NOT FOR USE IN CLINICAL DIAGNOSTIC PROCEDURES

13th Edition (Revised in Aug, 2023)

[PROPERTIES]

Source: Polyclonal antibody preparation

Host: Rabbit

Purification: Antigen-specific affinity chromatography followed by Protein A affinity chromatography

Traits: Liquid

Concentration: 0.5mg/mL

UOM: 100µL

Cross Reactivity: Porcine

Applications: WB; IHC; ICC/IF

[IMMUNOGEN]

Immunogen: Recombinant PRAME (Asn416~Leu502) expressed in *E.coli*

Accession No.: RPH323Hu01

[APPLICATIONS]

Western blotting: 0.01-2µg/mL;

Immunohistochemistry: 5-20µg/mL;

Immunocytochemistry: 5-20µg/mL;

Optimal working dilutions must be determined by end user.

[FORMULATION]

Form & Buffer: Supplied as solution form in PBS, pH7.4, containing 0.02% NaN₃, 50% glycerol.

[STORAGE AND STABILITY]

Storage: Avoid repeated freeze/thaw cycles.

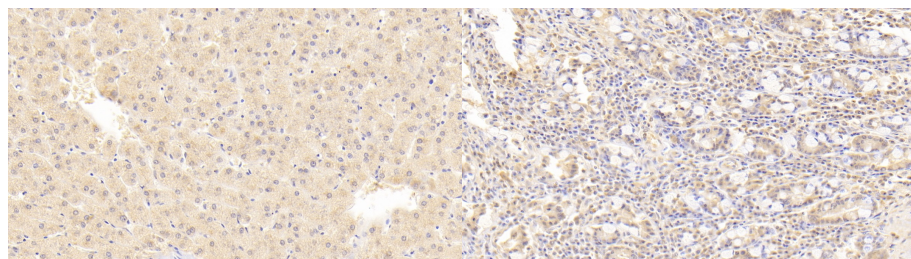
Store at 4°C for frequent use.

Aliquot and store at -20°C for 24 months.

Stability Test: The thermal stability is described by the loss rate. The loss rate was determined by accelerated thermal degradation test, that is, incubate the protein at 37°C for 48h, and no

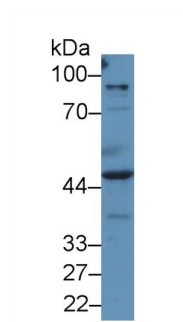
obvious degradation and precipitation were observed. The loss rate is less than 5% within the expiration date under appropriate storage condition.

[IDENTIFICATION]

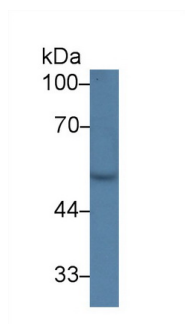


DAB staining on IHC-P; Samples:
Human Liver Tissue; Primary Ab:
20 μ g/ml Rabbit Anti-Human PRAME
Antibody Second Ab: 2 μ g/mL HRP-
Linked Caprine Anti-Rabbit IgG
Polyclonal Antibody (Catalog:
SAA544Rb19)

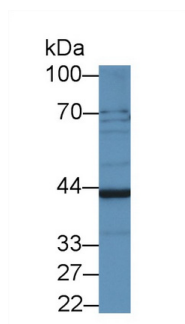
DAB staining on IHC-P;
Samples: Human Small intestine
Tissue;
Primary Ab: 20 μ g/ml Rabbit Anti-
Human PRAME Antibody
Second Ab: 2 μ g/mL HRP-Linked
Caprine Anti-Rabbit IgG Polyclonal
Antibody
(Catalog: SAA544Rb19)



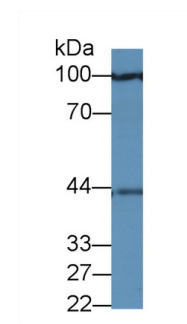
Western Blot; Sample: Human A549
cell lysate;
Primary Ab: 2 μ g/ml Rabbit Anti-Human
PRAME Antibody
Second Ab: 0.2 μ g/mL HRP-Linked
Caprine Anti-Rabbit IgG Polyclonal
Antibody
(Catalog: SAA544Rb19)



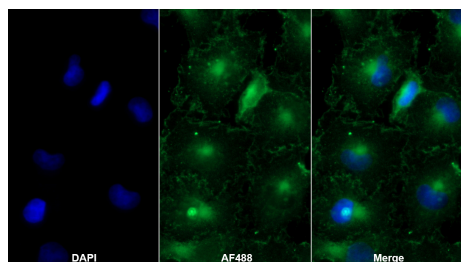
Western Blot; Sample: Human K562
cell lysate;
Primary Ab: 2 μ g/ml Rabbit Anti-Human
PRAME Antibody
Second Ab: 0.2 μ g/mL HRP-Linked
Caprine Anti-Rabbit IgG Polyclonal
Antibody
(Catalog: SAA544Rb19)



Western Blot; Sample: Human HepG2
cell lysate;
Primary Ab: 2 μ g/ml Rabbit Anti-Human
PRAME Antibody
Second Ab: 0.2 μ g/mL HRP-Linked
Caprine Anti-Rabbit IgG Polyclonal
Antibody
(Catalog: SAA544Rb19)



Western Blot; Sample: Human 293T
cell lysate;
Primary Ab: 2 μ g/ml Rabbit Anti-Human
PRAME Antibody
Second Ab: 0.2 μ g/mL HRP-Linked
Caprine Anti-Rabbit IgG Polyclonal
Antibody
(Catalog: SAA544Rb19)



AF488 staining on IF;

Sample: A549 cell

Primary Ab: 20µg/ml Rabbit Anti-

Human PRAME Antibody

Second Ab: 2?g/ml AF488-Linked

Caprine Anti-Rabbit IgG Polyclonal

Antibody

(Catalog: SAA544Rb11)

[IMPORTANT NOTE]

The kit is designed for research use only, we will not be responsible for any issue if the kit was used in clinical diagnostic or any other procedures.