

**PAG324Hu01**

**Polyclonal Antibody to Pregnancy Zone Protein (PZP)**

**Organism Species: *Homo sapiens* (Human)**

***Instruction manual***

FOR RESEARCH USE ONLY

NOT FOR USE IN CLINICAL DIAGNOSTIC PROCEDURES

---

13th Edition (Revised in Aug, 2023)

### **[ PROPERTIES ]**

**Source:** Polyclonal antibody preparation

**Host:** Rabbit

**Purification:** Antigen-specific affinity chromatography followed by Protein A affinity chromatography

**Traits:** Liquid

**Concentration:** 0.32mg/mL

**UOM:** 5µL

**Cross Reactivity:** Porcine

**Applications:** WB; IHC

### **[ IMMUNOGEN ]**

**Immunogen:** Recombinant PZP (Val1212~Met1391) expressed in *E.coli*

**Accession No.:** RPG324Hu01

### **[ APPLICATIONS ]**

Western blotting: 0.01-2µg/mL;

Immunohistochemistry: 5-20µg/mL;

Optimal working dilutions must be determined by end user.

### **[ FORMULATION ]**

**Form & Buffer:** Supplied as solution form in PBS, pH7.4, containing 0.02% NaN<sub>3</sub>, 50% glycerol.

### **[ STORAGE AND STABILITY ]**

**Storage:** Avoid repeated freeze/thaw cycles.

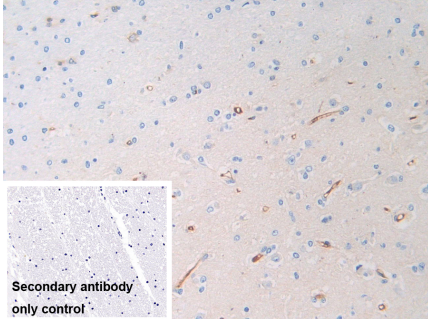
Store at 4°C for frequent use.

Aliquot and store at -20°C for 24 months.

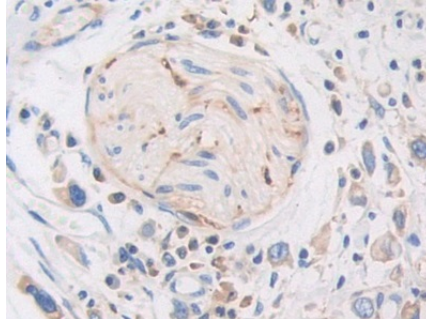
**Stability Test:** The thermal stability is described by the loss rate. The loss rate was determined by accelerated thermal degradation test, that is, incubate the protein at 37°C for 48h, and no obvious degradation and precipitation were observed. The loss rate is less than 5% within the

expiration date under appropriate storage condition.

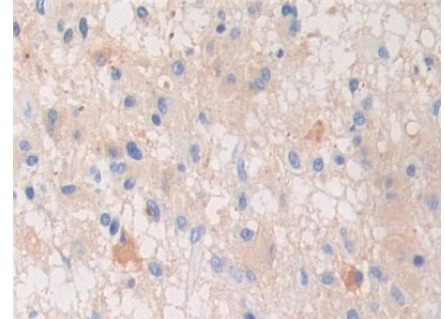
**[ IDENTIFICATION ]**



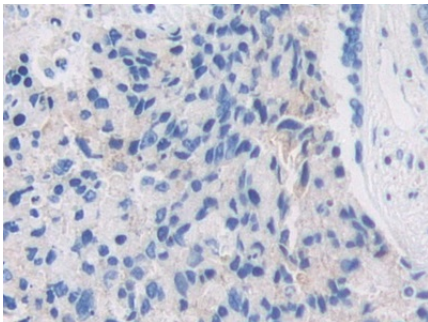
DAB staining on IHC-P; Sample:  
Human Cerebrum Tissue Primary Ab:  
20µg/ml Rabbit Anti-Human PZP  
Antibody Control: Used PBS instead of  
primary antibody Second Ab: 2µg/ml  
HRP-Linked Caprine Anti-Rabbit IgG  
Polyclonal Antibody (Catalog:  
SAA544Rb19)



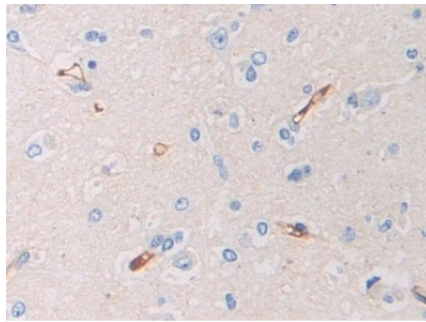
DAB staining on IHC-P;  
Samples: Human Stomach cancer  
Tissue;  
Primary Ab: 20µg/ml Rabbit Anti-  
Human PZP Antibody  
Second Ab: 2µg/mL HRP-Linked  
Caprine Anti-Rabbit IgG Polyclonal  
Antibody  
(Catalog: SAA544Rb19)



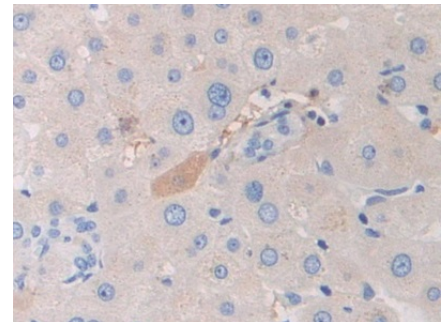
DAB staining on IHC-P;  
Samples: Human Glioma Tissue;  
Primary Ab: 20µg/ml Rabbit Anti-  
Human PZP Antibody  
Second Ab: 2µg/mL HRP-Linked  
Caprine Anti-Rabbit IgG Polyclonal  
Antibody  
(Catalog: SAA544Rb19)



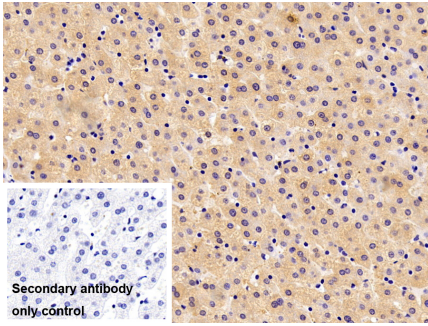
DAB staining on IHC-P;  
Samples: Human Prostate cancer  
Tissue;  
Primary Ab: 20µg/ml Rabbit Anti-  
Human PZP Antibody  
Second Ab: 2µg/mL HRP-Linked  
Caprine Anti-Rabbit IgG Polyclonal  
Antibody  
(Catalog: SAA544Rb19)



DAB staining on IHC-P;  
Samples: Human Cerebrum Tissue;  
Primary Ab: 20µg/ml Rabbit Anti-  
Human PZP Antibody  
Second Ab: 2µg/mL HRP-Linked  
Caprine Anti-Rabbit IgG Polyclonal  
Antibody  
(Catalog: SAA544Rb19)



DAB staining on IHC-P;  
Samples: Human Liver Tissue;  
Primary Ab: 20µg/ml Rabbit Anti-  
Human PZP Antibody  
Second Ab: 2µg/mL HRP-Linked  
Caprine Anti-Rabbit IgG Polyclonal  
Antibody  
(Catalog: SAA544Rb19)



DAB staining on IHC-P;

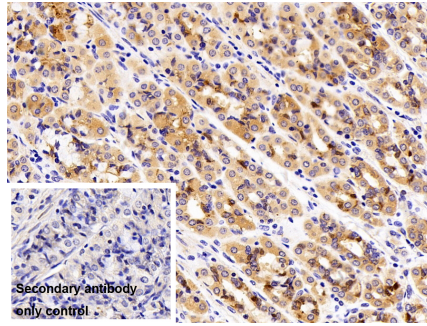
Sample: Porcine Liver Tissue

Primary Ab: 10µg/ml Rabbit Anti-Human PZP Antibody

Control: Used PBS instead of primary antibody

Second Ab: 2?g/ml HRP-Linked Caprine Anti-Rabbit IgG Polyclonal Antibody

(Catalog: SAA544Rb19)



DAB staining on IHC-P;

Sample: Porcine Stomach Tissue

Primary Ab: 10µg/ml Rabbit Anti-Human PZP Antibody

Control: Used PBS instead of primary antibody

Second Ab: 2?g/ml HRP-Linked Caprine Anti-Rabbit IgG Polyclonal Antibody

(Catalog: SAA544Rb19)

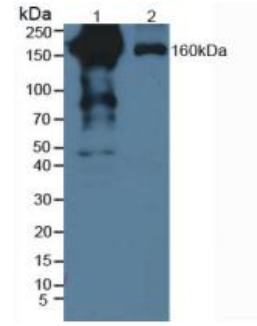


Figure. Western Blot; Sample: Lane1: Human Serum; Lane2: Human Lung Tissue.

**[ IMPORTANT NOTE ]**

The kit is designed for research use only, we will not be responsible for any issue if the kit was used in clinical diagnostic or any other procedures.